



AGENDA
ARCHITECTURAL REVIEW BOARD MEETING

Conference Room 102-103
Wednesday, June 18, 2025
5:30 PM

I. CALL TO ORDER

II. APPROVAL OF MEETING SUMMARY

A. May 15, 2025

III. UNFINISHED BUSINESS

IV. NEW BUSINESS

A. **Downtown Chesterfield, Lots 8 & 9 (SLCL Chesterfield Branch)**: An Amended Site Development Section Plan, Landscape Plan, Lighting Plan, Architectural Elevations, and Architect's Statement of Design for consolidated lots 8 and 9 located on a 4.25-acre tract of land southwest of the intersection of Chesterfield Parkway West and Burkhardt Place.

V. OTHER

VI. ADJOURNMENT

*PC Liaison Jane Staniforth is scheduled for this meeting

PERSONS REQUIRING AN ACCOMMODATION TO ATTEND AND PARTICIPATE IN THE ARCHITECTURAL REVIEW BOARD MEETING SHOULD CONTACT CITY CLERK VICKIE MCGOWND AT (636)537-6716 AT LEAST TWO (2) BUSINESS DAYS PRIOR TO THE MEETING.



**THE CITY OF CHESTERFIELD
ARCHITECTURAL REVIEW BOARD
THURSDAY – MAY 15, 2025
5:30 PM
CONFERENCE ROOM 102/103**

ATTENDANCE:

Mr. Mick Weber, Chair
Mr. Scott Starling, Vice-Chair
Mr. Doug DeLong
Mr. John Lavrich
Mr. Kristopher Mehrtens
Ms. Susan Lew

ABSENT:

Mr. Matt Adams

ALSO IN ATTENDANCE:

Mayor Dan Hurt
Councilmember Merrell Hansen
Planning Commission Liaison, Gail Choate
Mr. Justin Wyse, Director of Planning
Mr. Isaak Simmers, Planner
Mr. Shane Streiler, Planner
Ms. Kristine Kelley, Recording Secretary

I. CALL TO ORDER

Chair Weber called the meeting to order at **5:30 p.m.**

II. APPROVAL OF MEETING SUMMARY

A. April 10, 2025

Vice-Chair Starling made a motion to approve the meeting summary as written. Board Member Lavrich seconded the motion. **The motion passed by a voice vote of 6-0.**

III. UNFINISHED BUSINESS - No unfinished business at this time.

IV. NEW BUSINESS

A. Carshield: An Amended Site Development Plan, Landscape Plan, Architectural Elevations, and Architect’s Statement of Design for a 32-acre tract of land zoned “PI” Planned Industrial located east of N. Eatherton Rd.

STAFF PRESENTATION

Mr. Justin Wyse, Director of Planning explained that the site is currently under construction but the applicant is requesting a modification in order to construct a 1,000 square foot restroom facility, and an approximate 2,000

square foot concession/storage building in between the outdoor athletic fields. A pavilion would be located in between both buildings to provide a shaded sitting area.

Color and material samples were provided and the applicant was available to answer questions from the Board.

DISCUSSION

During discussion the following information was provided.

- The proposed mechanical equipment will be concealed by the parapets.
- The roof will be internally drained.
- Center canopy is slightly sloped to address water.
- Use of existing site trash collectors.
- No ground-mounted equipment.
- No concerns with landscaping.
- Accent blue colors were identified.
- Wall reveals will match the building.
- No proposed roof-mount film equipment.
- No wall mount lighting.

Motion

Vice-Chair Starling made a motion to forward Carshield to Planning Commission with a recommendation of approval, as presented. Board Member Mehrtens seconded the motion. **The motion passed by a voice vote of 6-0.**

- B. **Chesterfield Ice and Sports Complex, Lot A:** An Amended Site Development Section Plan, Landscape Plan, Lighting Plan, Amended Architectural Elevations, and Architect’s Statement of Design for an existing ice and sports complex located on a 10.11-acre tract of land zoned “PC” Planned Commercial District north of Chesterfield Industrial Boulevard, and east of its intersection of Wings of Hope Boulevard and a Private Road.

Due to a conflict of interest, Board Member DeLong recused himself from the discussion and vote.

STAFF PRESENTATION

Mr. Isaak Simmer, Planner explained that the request is for a Phase 2 construction for Chesterfield Ice and Sports Complex. Phase 2 of the expansion will consist of two separate construction phases, Phase 2-A and Phase 2-B:

Overview

- Phase 2-A: The goal is to provide additional locker rooms and amenities for Maryville University Hockey Team.
- Phase 2-B: Provide a third practice rink only for the Chesterfield Hockey Association.

Addendum

It has just come to Staff’s attention, that Chiodini Architects is requesting a last-minute revision to the elevations. An explanation of those revisions is provided below:

North and West Elevations – Façade Addendum Memo

- Phase 2-B East Elevation will be a continuation of existing materials – Thin Brick Veneer

ARCHITECTURAL REVIEW BOARD MEETING SUMMARY
05-15-2025

- Phase 2-B North and West Elevation have been revised – Brick-look form liner in concrete tilt-up panels painted to match thin brick.

Landscape

Minor amendments have been made to the existing landscape plan with phased installation. Additional landscaping has been included around the trash enclosure which is to be installed during Phase 2-A of the construction. Phase 2-B will include a mixture of bushes and shrubs along the north and east elevations of the proposed expansion.

Mechanical Equipment

The rooftop mechanical equipment has been screened using a minimum of two (2) feet from roof to parapet.

Lighting

Three (3) wall pack lighting fixtures will be relocated along the north elevation to adjust to the expansion and additional protection bollards have been included along the east elevation for patron safety.

DISCUSSION

During discussion the following information was provided.

- The project team was available to answer questions from the Board; however, there were substantial concerns that color and material samples were not available.
- Lack of quality and consistency to the proposed use of materials along the highly visible Highway 40 corridor.
- Parking has been met and anticipated for the proposed expansion.
- The roof will be internally drained.

There was considerable discussion pertaining to the timeline of the proposed expansion by utilizing “temporary materials” during the phased construction.

Applicant Comments/Solution

Mr. Tim Lowe, representing the Petitioner, explained that the buildings are independent and constructed by separate groups. He further provided the basis to temporary use of materials mainly due to funding and availability. Upon further discussion, the project team agreed to; remove the EIFS and form liners, submit revised elevations, replace with painted concrete tilt-up panels, and brick veneer. The building now provides consistency with the previous approval with one change - the EIFS wall will no longer be proposed.

Motion

Board Member Mehrtens made a motion to forward Chesterfield Ice and Sports Complex, Lot A to Planning Commission with a recommendation of approval with the following conditions:

- The proposed phased additions, both 2-A & 2-B, shall utilize painted concrete tilt-up panels and thin-brick veneer cast into the tilt-up panels on the front (east), rear (west) and side (north) elevations to match the existing facades as discussed with and agreed upon by the petitioner to create a consistent and cohesive facility.

Vice-Chair Starling seconded the motion. **The motion passed by a voice vote of 5-0. As previously mentioned, Board Member DeLong recused himself from the vote.**

- C. **Herman Stemme Office Park, Lot 2B (Waterway)**: An Amended Site Development Section Plan, Landscape Plan, Lighting Plan, and Amended Architectural Elevations for a gas station and car wash located on a 1.33-acre tract of land zoned “PC” Planned Commercial located southeast of Olive Boulevard, northeast of Olive’s intersection with Swingley Ridge Road.

STAFF PRESENTATION

Mr. Shane Streiler, Planner explained that the request is for modifications for an outdoor waiting area addition, a right car wash lane extension, a fuel pump canopy reduction, and substantial changes to the building’s facades.

Proposed Waiting Area

The waiting area will feature the existing stone landscaping beds and new aluminum railings. The existing chairs will be replaced. A new self-supporting prefinished metal canopy will be added.

Proposed Car Wash Lanes

The two (2) canopies covering the pay stations will be replaced with two (2) light “Waterway” blue entrance poles. The existing asphalt pavement will be expanded to the east to increase the width of the right car wash lane.

Proposed Fuel Station Canopy

The fuel station canopy will be reduced in length by 30 feet and painted pure white and cobalt blue.

Landscaping

The landscaping surrounding the entrance monument sign, the perimeter of the building, and the perimeter of the property will remain. Minor landscaping changes are proposed at the outdoor waiting area, the car wash entrance, and the landscape buffer along Olive Boulevard, where three (3) ginkgo trees will be added.

Mr. Streiler then provided color and material details to the north, south, east, and west elevations. The project meets all UDC requirements.

Corporate brand color and material samples were provided and the applicant was available to answer questions from the Board.

DISCUSSION

During discussion the following information was provided.

- Mechanical equipment will be screened.
- The Board complimented the look and cleanliness of the facility.
- No concerns with the landscaping.
- The proposed (pergola style) design canopy has a slight slant for water collection.
- Concerns about the lack of materials along the north and south elevations.
- Signage locations were identified.
- No concerns with the proposed corner concrete modular versa-lok retaining wall.

Motion

Vice-Chair Starling made a motion to forward Herman Stemme Office Park, Lot 2B (Waterway) to Planning Commission with a recommendation of approval with the following condition:

- Provide to Staff updated north and south elevations, by adding vertical joints to the EIFS walls to help break up the façades.

Board Member Lew seconded the motion. **The motion passed by a voice vote of 6-0.**

- D. **The Wedge:** A Site Development Plan, Landscape Plan, Lighting Plan, Architectural Elevations, and Architect’s Statement of Design for a 5.04-acre tract of land zoned “PC” Planned Commercial located south of the intersection of Olive Street Road and Chesterfield Airport Road.

STAFF PRESENTATION

Mr. Justin Wyse, Director of Planning explained that the applicant has submitted plans for the redevelopment of an existing gas station into a mixed-use development. Mr. Wyse gave a PowerPoint presentation providing history of the site and the surrounding area. He further explained the ongoing litigation and details of the settlement agreement.

The Planning Commission had recommended approval with the condition that the applicant work with Staff to increase the landscaping, particularly along roadway frontages.

The mixed-use development will consist of;

- A new gas station with a car wash and convenience store on the western portion of the site.
- A multi-tenant retail building just to the east of the gas station.
- The existing gas station on site will be demolished.

Color and material samples were provided and the applicant was available to answer questions from the Board.

DISCUSSION

During discussion the following information was provided.

- The area on the parking lot striped and marked with “No Parking Loading Zone” is blocked off for easy access to the underground fuel tanks.
- In response to Commissioner Choate, it was confirmed on the colored site plan that the stations along Chesterfield Airport Road at the right-turn only access point are “air” stations only – *not “air/vac” stations.*
- There is no residential district within the surrounding area.
- Issues with the stark white gas pump canopies. The canopy color is dictated by corporate branding.
- Suggested use of stone or continuation on the canopy columns.
- Colors and use of the safety bollards.
- Board Member DeLong suggested additional landscaping throughout the site particularly an increase along the road frontage. Considerations need to be made near utility lines and proposed monument sign. All issues will be identified and addressed prior to Planning Commission review.

Motion

Board Member Mehrrens made a motion to forward The Wedge to Planning Commission with a recommendation of approval with the following conditions:

- Provide additional landscaping along Chesterfield Airport Road, Olive Street Road, along the southern property line behind the vehicle vacuum stations and the two islands in front of the retail building.

- Provide a sketch to Staff for review to incorporate the adhered stone veneer of the buildings to the columns of the gas pump canopies to create a more unified appearance.

Board Member DeLong seconded the motion. **The motion passed by a voice vote of 6-0.**

V. OTHER

Board Member Lavrich brought to the attention of an unscreened ground-mount mechanical unit at the newly renovated Amphitheater. Staff will look into the matter.

VI. ADJOURNMENT 7:12 pm

690 Chesterfield Pkwy W • Chesterfield MO 63017-0760
Phone: 636-537-4000 • Fax 636-537-4798 • www.chesterfield.mo.us

Architectural Review Board Staff Report

Meeting Date: June 18, 2025

From: Isaak Simmers, Planner

Location: 16400 Burkhardt Place

Description: **Downtown Chesterfield, Lots 8 & 9 (SLCL Chesterfield Branch):** An Amended Site Development Section Plan, Landscape Plan, Lighting Plan, Architectural Elevations, and Architect’s Statement of Design for consolidated lots 8 and 9 located on a 4.25-acre tract of land southwest of the intersection of Chesterfield Parkway West and Burkhardt Place.

PROPOSAL SUMMARY

Lamar Johnson Collaborative, in partnership with Stock and Associates Consulting Engineers, Inc., submitted an Amended Site Development Section Plan and associated material for the complete demolition and reconstruction of the St. Louis County Library – Chesterfield Branch. The new library will be approximately 20,700 square feet in size (existing library being 16,800SF), and will house a variety of community amenities, including but not limited to, a café serving local coffee and access to the upgraded adjacent park and garden.



Figure 1: Subject Site

RELEVANT SITE HISTORY

2001 SDSP	Site Development Section Plan approved for Downtown Chesterfield Lots 8 and 9 for new construction of the St. Louis County Library – Sachs Branch.
2001 ASDSP	Downtown Chesterfield, Lots 8 and 9 – 1 st Amended Site Development Plan to include proposed cross access easement off Burkhardt Place.
2015 ASDSP	Downtown Chesterfield, Lots 8 and 9 – 2 nd Amended Site Development Section Plan (Partial) to construct the adjacent park and garden.
2016 ASDSP	Downtown Chesterfield, Lots 8 and 9 – 3 rd Amended Site Development Section Plan for minor amendments to the sites parking area.
2025 BAP	A Boundary Adjustment Plat approved for Lots 8 and 9 for the consolidation of two (2) parcels into one (1) parcel.

STAFF ANALYSIS

A. Site Relationships

Downtown Chesterfield is an area that supports mixed use development, and civic spaces where social interaction can be created. Uses and buildings are located on blocks with streets designed to extend the grid network. Buildings typically stand multiple stories tall with a mix of uses that encourage pedestrian activity. The Chesterfield Community YMCA and Wild Horse Village development are to the north, and the Chesterfield Central Park and City Amphitheater are to the west. Undeveloped land is situated south and the Chesterfield Mall redevelopment is located directly to the east of the subject site.

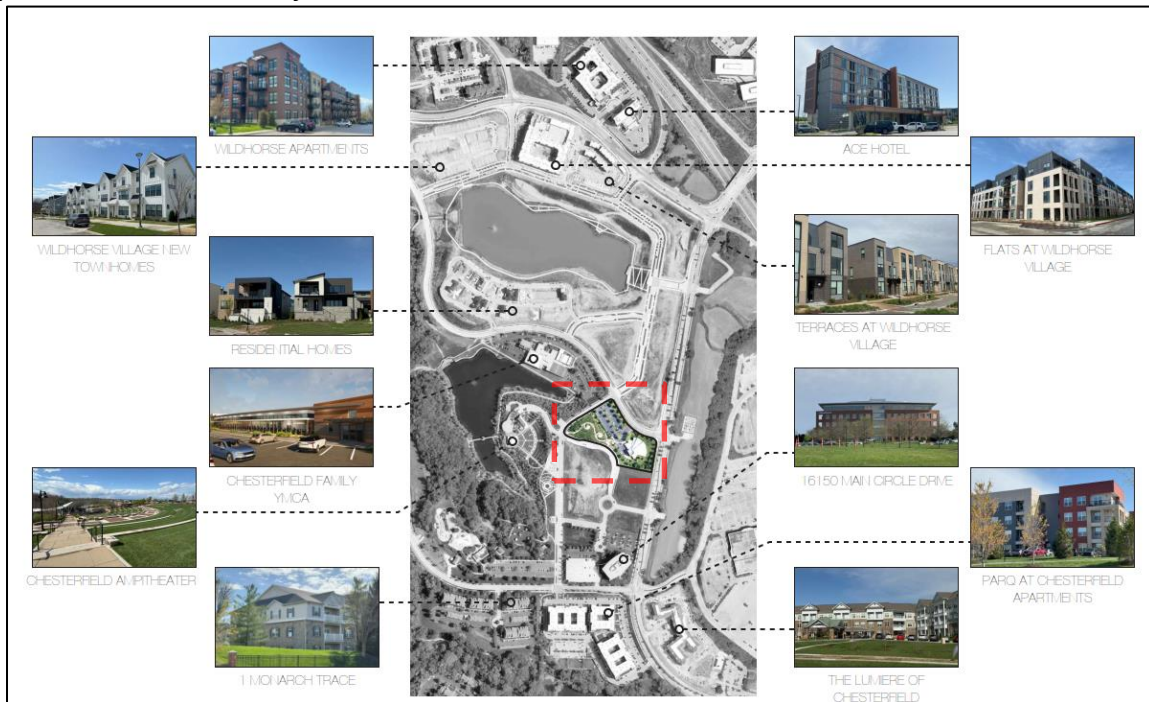


Figure 2: Adjacent Land Uses

B. Circulation and Access

Significant changes have been proposed for the circulation and access to the subject site. There are two (2) existing access points; one (1) off Burkhardt Place, and one (1) off Veterans Place Drive. The existing library is currently situated at the southwest corner of Burkhardt Place and West Chesterfield Parkway. The proposed site configuration reverses the location of the parking area and the library. See Figure 3 and Figure 4. Per the applicant, the new site orientation better incorporates existing site features, like the adjacent park and garden, and will enhance pedestrian walkability to Central Park and the Amphitheater. The new site layout provides a single proposed access off Main Circle Drive where two (2) additional street lights have been proposed. See Lighting Section.



Figure 4: Existing Site



Figure 3: New Site Layout

C. Scale

Per the applicant, the scale of the building has been carefully considered in relation to surrounding developments. The prominent curved roofline of the proposed building was inspired by the topography and pathways of the adjacent park and garden. The goal of the applicant was to produce a pedestrian-friendly scale with a seamless transition into the surrounding community. The proposed two (2) story building will measure 27' at the tallest point above the main entry and will measure approximately 235' along Burkhardt Place and approximately 97' along Veterans Place Drive. The structure will include a simple, but prominent curved roofline, See Figure 5.

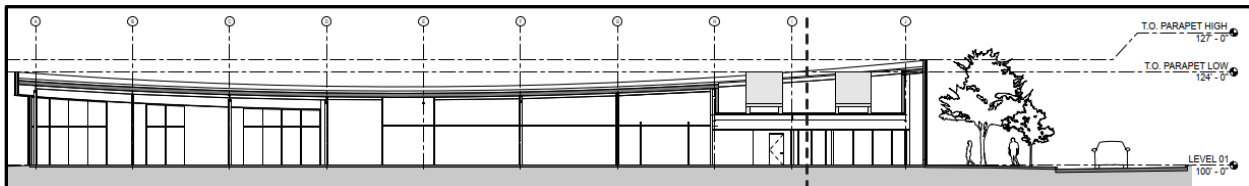


Figure 5: Longitudinal Section Looking North

D. Materials and Design

Materials utilized throughout the design; dark bronze corrugated aluminum panel with concealed fasteners, curtain wall glazing, stone panels with a honed finish, and engineered wood panels. See Figure 6.

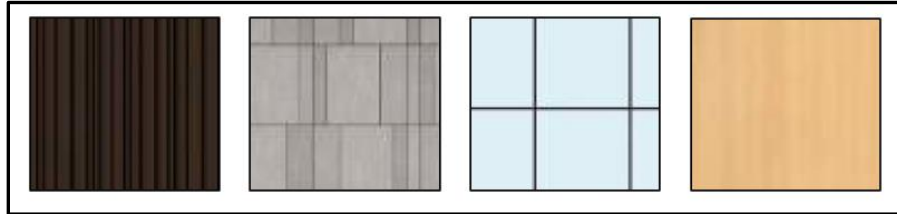


Figure 6: (Left to Right) dark bronze corrugated aluminum panel, stone panel with honed finish, curtain wall glazing, engineered wood panels

Per the applicant, the materials have been chosen to be high quality and durable to ensure longevity and minimal maintenance. Contemporary earth tone colors have been chosen to harmonize with the natural and built surroundings. Accent materials of stone and engineered wood provide contrast with the dark bronze panels and provide additional texture to the design. A variation of these same materials can be found in the surrounding buildings of Wildhorse Village and should contribute to the cohesive look of the Downtown Chesterfield area. The applicant has provided both color elevations, see Figures 7 – 10, and black and white elevations included in the packet.

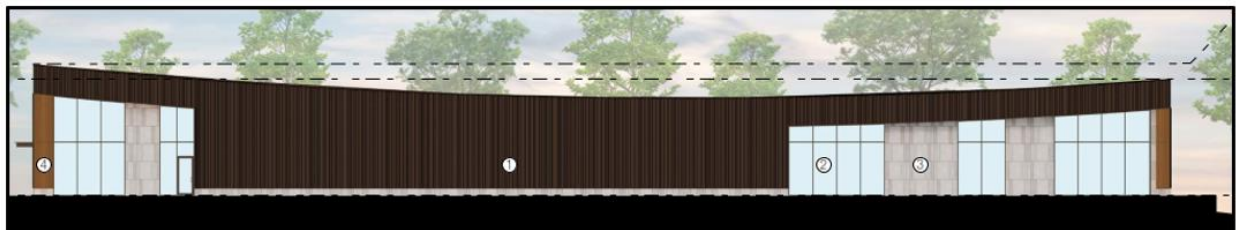


Figure 7: North Elevation



Figure 8: East Elevation



Figure 9: West Elevation



Figure 10: South Elevation

E. Landscape Design and Screening

As previously mentioned, the parking area and the building have been reversed. Per the applicant, this was a strategic choice to site the building along the northern edge of Burkhardt Place with vehicular access from Main Circle Drive. The architects wanted to intentionally strengthen community engagement to the refurbished park and garden. Features of the garden include an arrival garden and a reading terrace that offers outdoor workspaces. The rain garden has been enhanced and will serve as a prominent feature, linked by pedestrian bridge. Native and adaptive plantings contribute to the overall ecological health and stormwater management, as well as provides visual interest in every season. See Figure 12.



Figure 11: Existing Park and Garden



Figure 12: Updated Park and Garden

Limestone mill block seating and retaining wall, see Figure 13, has been incorporated into the updated garden design and will be complemented with fresh concrete flat work and concrete stairs with an aluminum handrail with anodized finish, See Figure 14. The pedestrian bridge will be constructed using composite wood decking with hidden fasteners and a welded steel tube frame. See Figure 15.



Figure 13: Limestone mill block seating and retaining wall



Figure 14: Concrete stair with railing



Figure 14: Pedestrian bridge

Trash Enclosure has been designed using infinity euro aluminum framework / composite infill with a tube steel frame. The enclosure will be gated and large enough to fit two (2) standard size trash containers. See Figure 15.



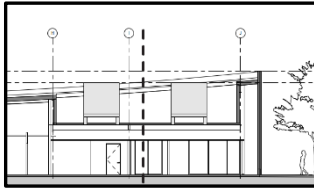


Figure 16: Rooftop Mechanical equipment

Figure 15: Trash enclosure

Rooftop Mechanical equipment has been situated beneath the parapet and will be screened on all four sides, see Figure 16.

Please note the applicant has requested a modification to the required thirty percent (30%) tree preservation requirement due to the strategic placement of the building at the north corner of the site impacting existing tree mass. A statement from the Landscape Architect is included in the drawings. Additionally, a Landscape Mitigation Plan, which designates proposed trees to be counted towards mitigation, has been submitted in accordance with City Code.

F. Retaining Walls

Retaining walls have been incorporated at various locations throughout the site. Per the applicant, the walls were designed to complement existing site topography and enhance the new building design. Two (2) types of retaining walls have been proposed; a cast in place concrete retaining wall with formliner, see Figure 17, and an Alperstein retaining wall, see Figure 18. The concrete retaining wall has been situated along the north corner of the site to elevate the new building along Burkhardt Place. It provides an area for future signage, as well as foundation for landscaping. The Alperstein retaining wall has been proposed along West Chesterfield Parkway to support the new parking area.



Figure 17: Concrete retaining wall with formliner



Figure 18: Alperstein retaining wall

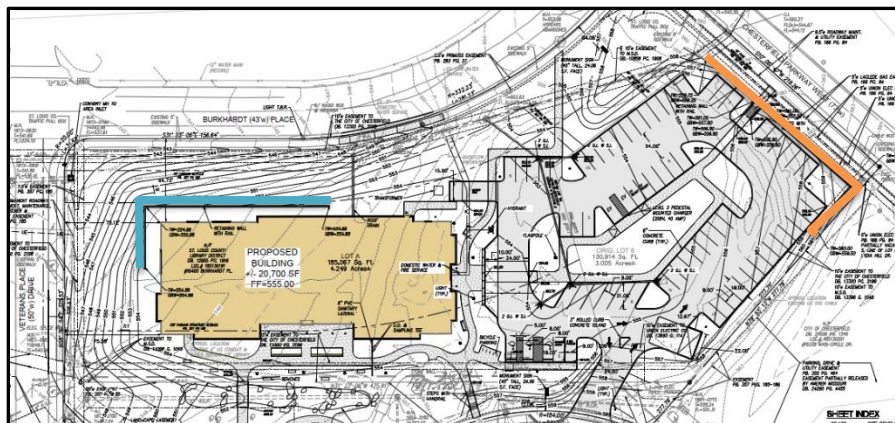


Figure 19: Alperstein retaining wall (Orange), Concrete retaining wall with form liner (Blue)

G. Lighting

The exterior lighting has been designed to provide safety and security without producing glare or spillover. Pedestrian landscape fixtures have been incorporated throughout the refurbished park and garden area. Per the applicant, special care was taken to minimize disturbance to neighboring properties and preserve night skies. Accent lighting has been incorporated selectively around all four elevations of the building. See Figure 20. There are existing light fixtures throughout the Downtown Chesterfield Subdivision, and two (2) new light poles and fixtures have been provided along Main Circle Drive and are proposed to match those along Veterans Place Drive. See Figure 22. The parking area will be lit using standard parking lot lighting or the area. See Figure 21. The Site Photometric Plan has been reviewed by City Staff and found to be Code compliant.



Figure 20: Accent / Building Lighting



Figure 21: Parking Area Lighting



Figure 22: Existing Lighting along Veterans Place Drive

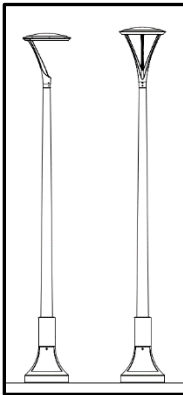


Figure 23: Pedestrian Poles and Fixtures

Eight (8) pedestrian light poles and fixtures have been incorporated throughout the refurbished park and garden to match the lighting that has been utilized throughout the Wildhorse Village development. See Figure 23.

DEPARTMENT INPUT

Be advised, this project is still going through development review by City Staff and will not proceed to the Planning Commission until all outstanding items have been addressed. All recommendations made by the Architectural Review Board will be included in Staff's report to the Planning Commission. Staff requests review on the Amended Site Development Section Plan, Landscape Plan, Lighting Plan, Architectural Elevations, and Architect's Statement of Design for Downtown Chesterfield, Lots 8 & 9 (SLCL Chesterfield Branch).

RENDERING(S)





MOTION

The following options are provided to the Architectural Review Board for consideration relative to this application:

1. "I move to forward the Amended Site Development Section Plan, Landscape Plan, Lighting Plan, Architectural Elevations, and Architect's Statement of Design for Downtown Chesterfield, Lots 8 &9 (SLCL Chesterfield Branch) as presented, with a recommendation for approval (or denial) to Planning Commission."
2. "I move to forward the Amended Site Development Section Plan, Landscape Plan, Lighting Plan, Architectural Elevations, and Architect's Statement of Design for Downtown Chesterfield, Lots 8 & 9 – (SLCL Chesterfield Branch) with a recommendation for approval with the following conditions..."

Attachments:
ARB Submittal

May 19, 2025

City of Chesterfield, MO
690 Chesterfield Pkwy W
Chesterfield, MO 63017

Attention: Mr. Isaak Simmers, Planner

Re: Downtown Chesterfield Lots 8-9 SLCL Chesterfield Branch 2025 ASDSP

Dear Mr. Simmers,

We are pleased to offer the following responses your Review comments dated May 8, 2025.

General

1. Provide a copy of the geotechnical report and include a geotechnical engineer's certification on the plan.

SLCL is in the process of obtaining the geotechnical report. LJC will forward the report as soon as we receive it (before our planning commission meeting).

2. Please include the location of all existing and proposed exterior light poles and fixtures on the lighting plan.

The included updated civil plan now shows all the existing and proposed exterior light poles and fixtures. The following light fixtures will be included:

- *Lights to match existing Veterans Pl Dr fixtures*
- *Parking lot poles*
- *Pedestrian poles (at the entry and in the park)*
- *Building up lights*
- *Landscape up lights*

ARB

3. Provide black and white elevations.

Black and white elevations are now included in the ARB packet.

4. Provide material and an elevation of the proposed pavilion

The pavilion has not been selected yet but will align with the design of the proposed building. The material will be of low maintenance.

5. Please remove all signage from the renderings and the elevations. Signage is reviewed through a separate process.

All signage has been removed from the renderings and elevations.

6. Please clarify the longitudinal Section Looking North. The parking area and roofline look as if you were facing the south elevation. Also, please label the rooftop mechanical equipment and confirm the rooftop mechanical equipment will be screened by the parapet.

Please see the illustrative site plan for overall section identifiers. The rooftop mechanical equipment has also been labeled and will be screened by the parapet.

Thank you for your review of this project. Please let me know if there are any questions.

Respectfully,

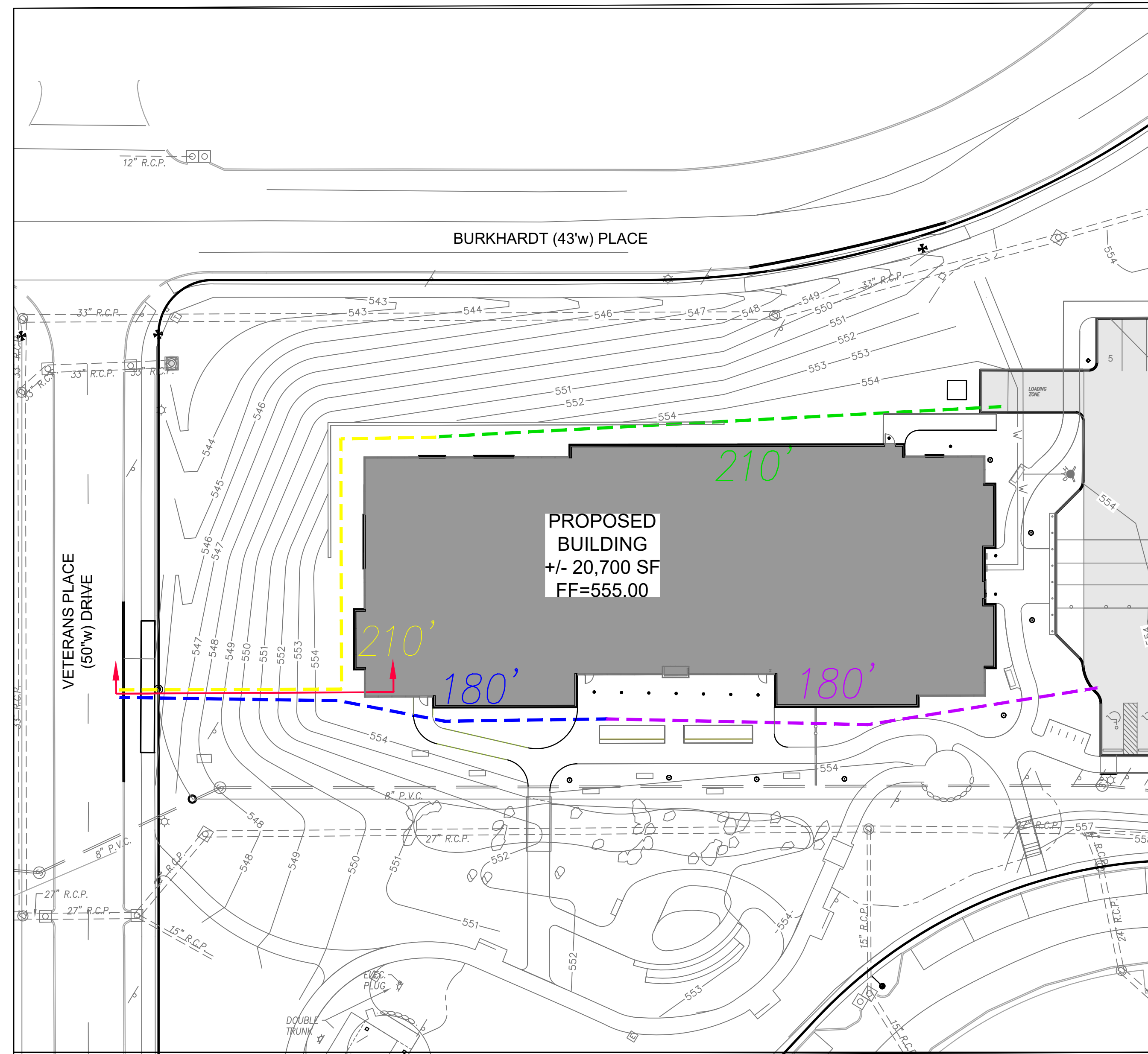


Ryan Stumpf
Senior Associate

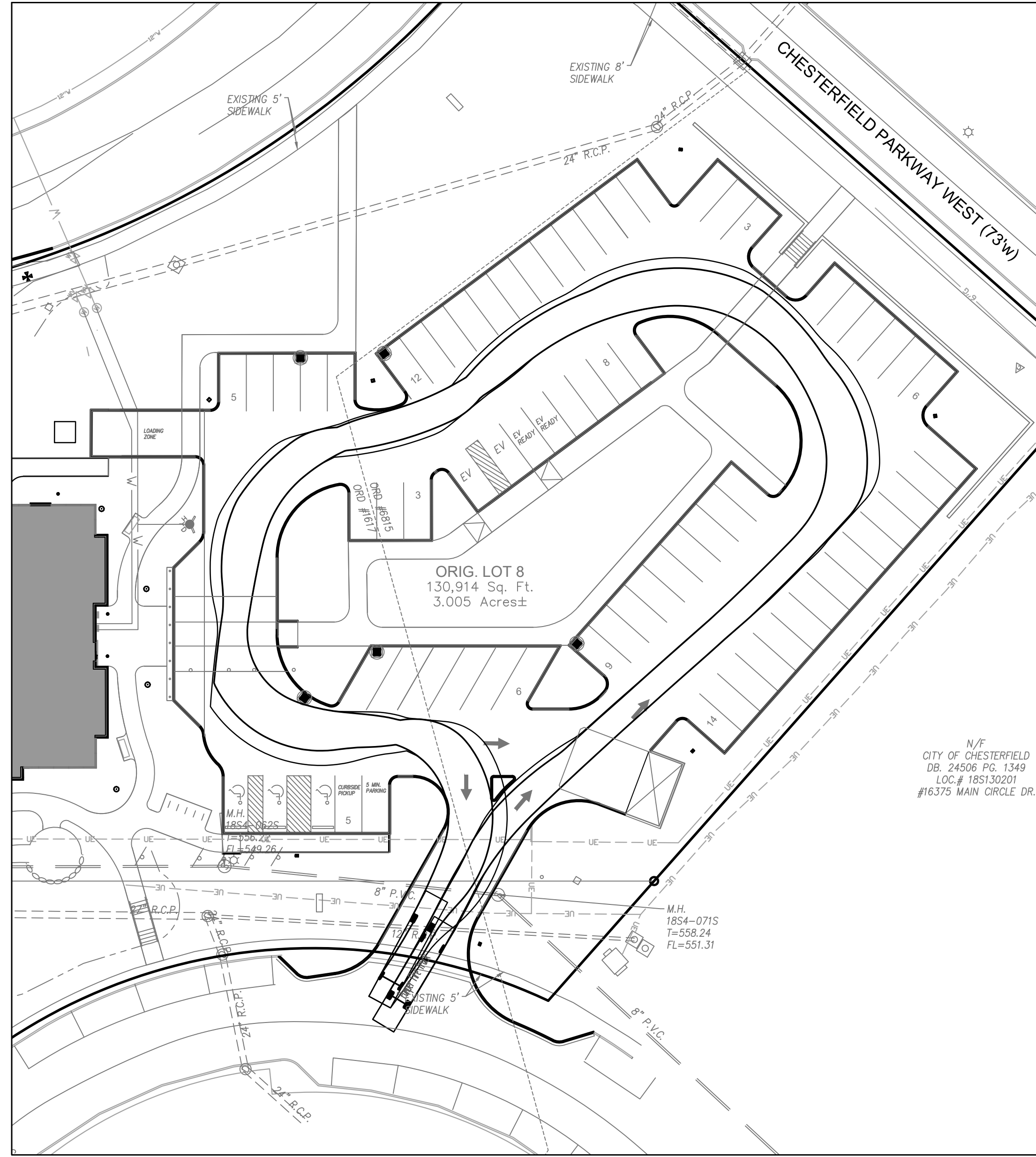
Attachments:

SLCL Chesterfield Branch _ ARB Submission Presentation R1 - 20250521
2025-05-21 SLCL CHESTERFIELD

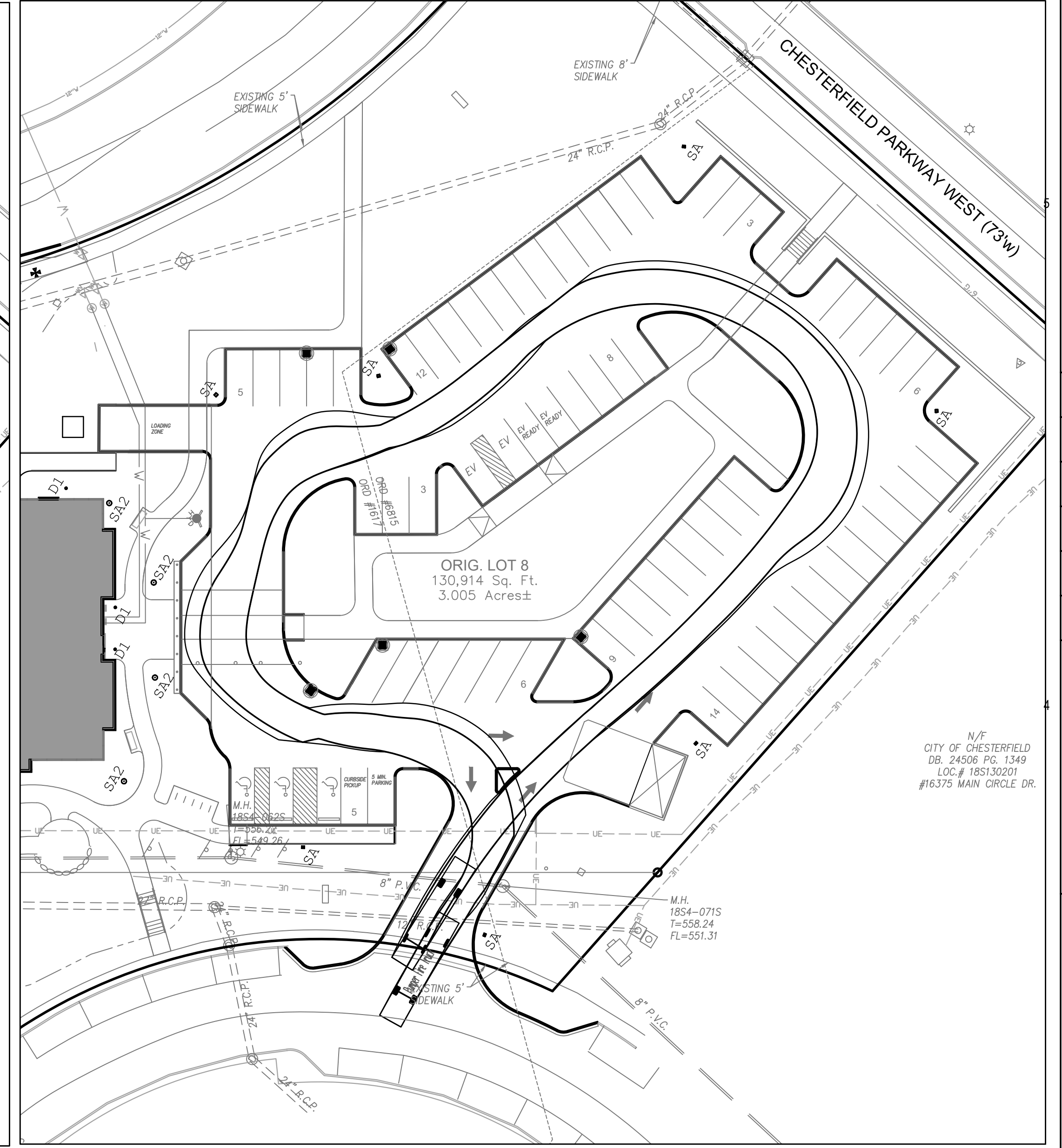
Cc: Kristen Sorth, St. Louis County Library
Kelli Reeves, St. Louis County Library
Amy Luchun, LJC
Ellen Eckert, LJC
Matt Maranzana, LJC
Priyasha Shrestha, LJC
George Stock, Stock & Associates
Allison Gauch, Stock & Associates



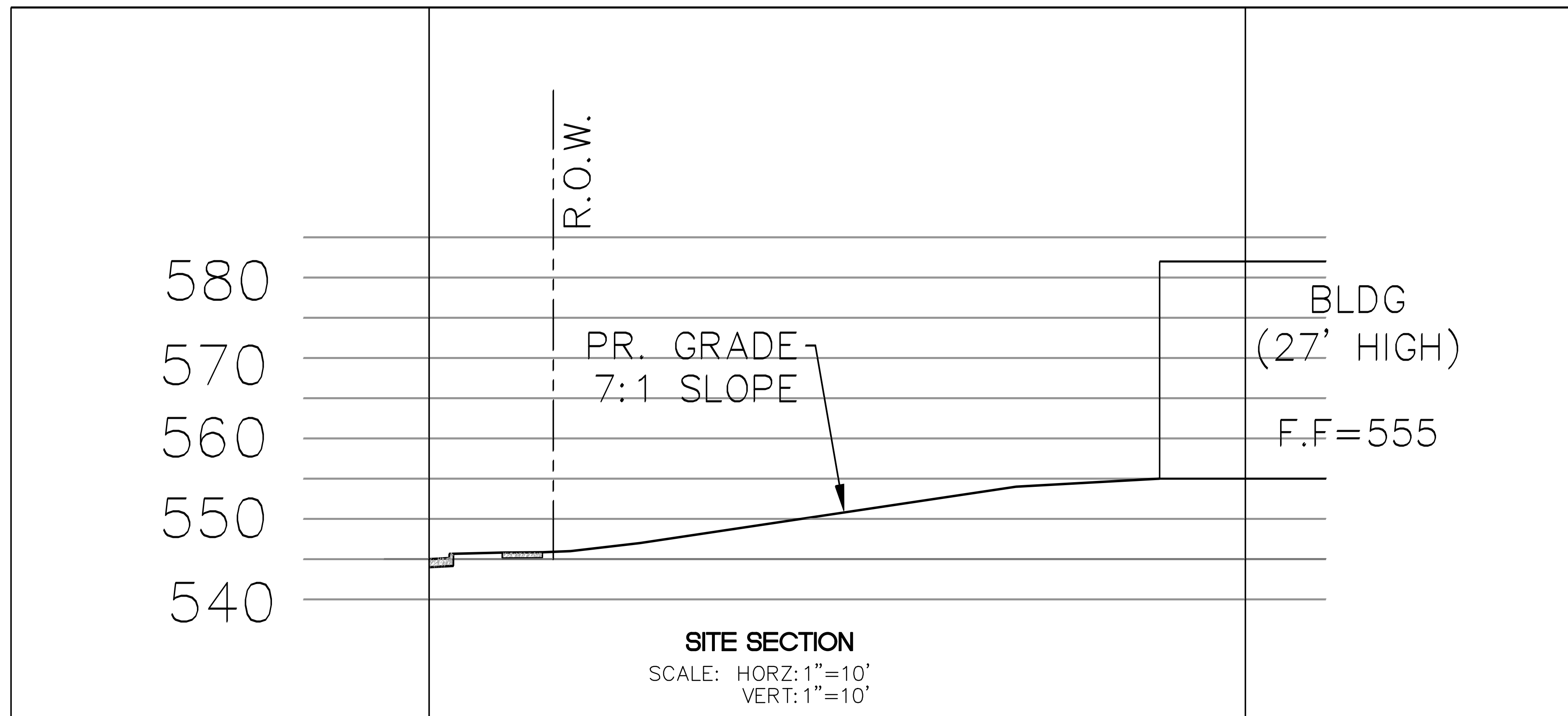
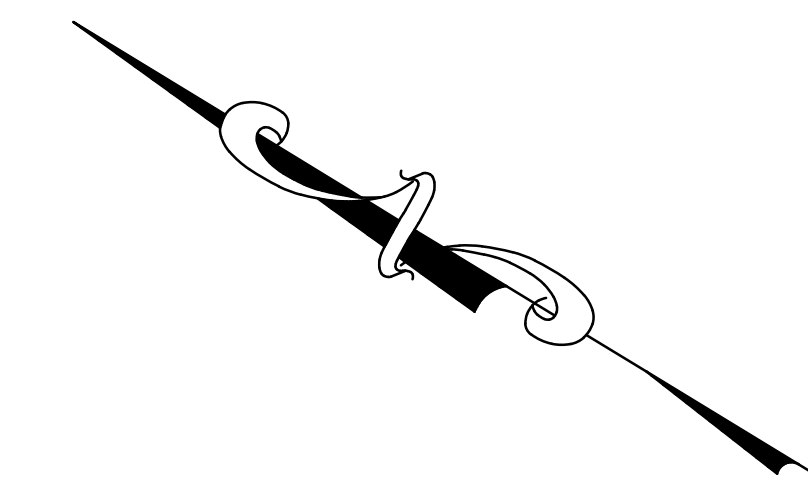
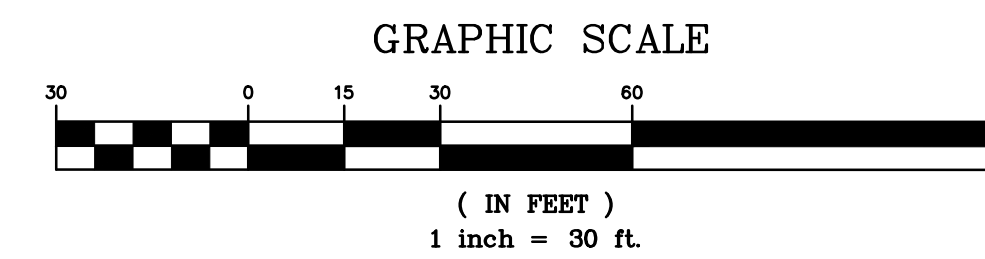
BUILDING ACCESS



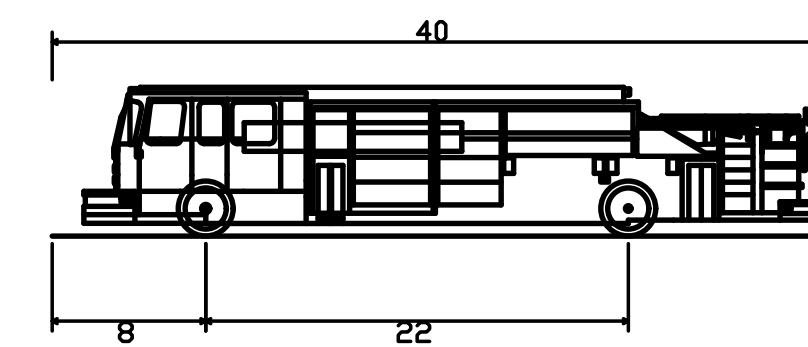
COUNTERCLOCKWISE ROUTE



CLOCKWISE ROUTE



SITE SECTION
SCALE: HORIZ: 1"=10'
VERT: 1"=10'



Pumper Fire Truck
 Overall Length 40.00ft
 Overall Width 8.16ft
 Overall Body Height 7.74ft
 Min. Body Ground Clearance 0.65ft
 Track Width 8.16ft
 Lock-to-lock time 5.00s
 Max Wheel Angle 45.00°

Lamar Johnson Collaborative
 8640 EVANS AVE.
 ST. LOUIS, MISSOURI 63134
 PH: 314.423.9100

OWNER
 SAINT LOUIS COUNTY LIBRARY
 LANDSCAPE ARCHITECT
 LAMAR JOHNSON COLLABORATIVE
 CIVIL ENGINEER
 STOCK AND ASSOCIATES
 STRUCTURAL ENGINEER
 DAVID MASON + ASSOCIATES
 MEP - FP ENGINEER
 IMEG
 AV ENGINEER
 TIE CONSULTING LLC

05/21/25

 GEORGE M. STOCK E-25116
 CIVIL ENGINEER
 CERTIFICATE OF AUTHORITY
 NUMBER: 00096A

SLCL - CHESTERFIELD BRANCH
 St. Louis County Library
 16400 Burkhardt Pl., Chesterfield, MO 63017
 AMENDED SITE DEVELOPMENT PLAN

DRAWING ISSUE	
DESCRIPTION	DATE
ASDSP SUBMISSION	03/19/25
ASDSP SUBMISSION R1	04/18/25
SD Set	04/29/25
ASDSP SUBMISSION R2	05/21/25

BUILDING MAP

DRAWING TITLE

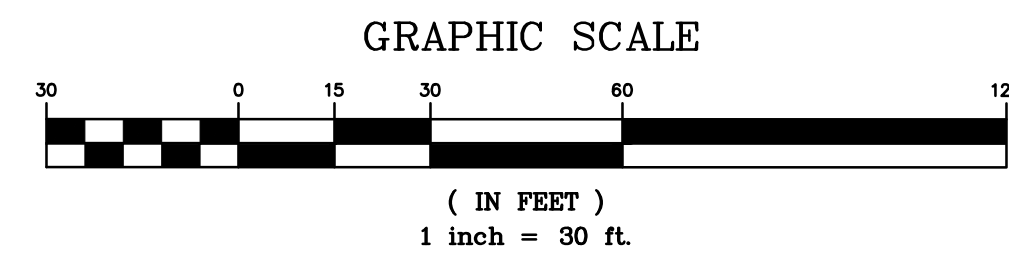
FIRE ACCESS & 10 20

(IN FEET)

DRAWING NO. C0.200

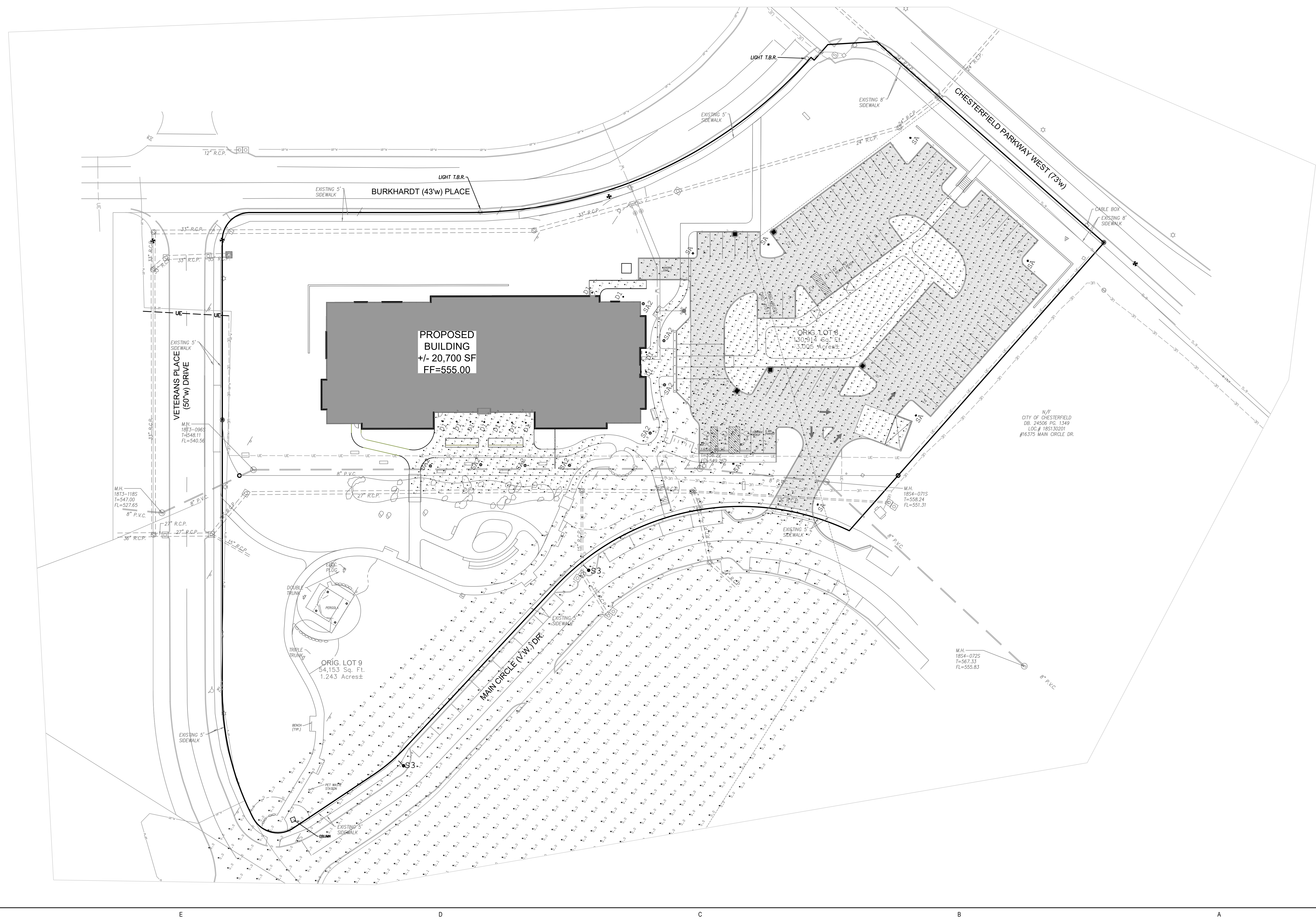
1 inch = 20'

Job # 25.000000



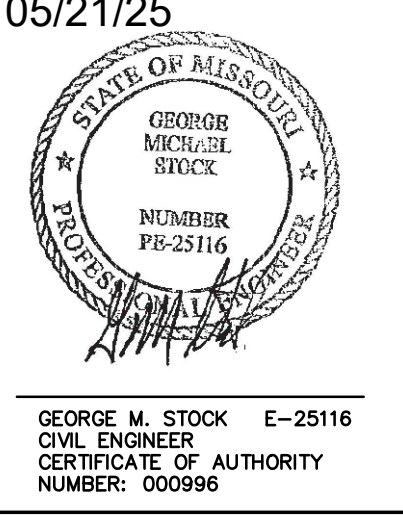
Luminaire Schedule									
Symbol	Qty	Label	Arrangement	Description	Tag	LLF	Luminaire Lumens	Luminaire Watts	Total Watts
●	2	TO MATCH EXISTING LIGHTS ON VETERANS PL DR.	Single	UCM-H3-FTG-150MH	S3	0.900	7192	185	370
○	11	CAN LIGHT FIXTURES IN SOFFIT	Single	LD6C10D010 EU6109040 6LBWLI	D1	0.900	1057	9.8	107.8
□	8	PEDESTRIAN POLES	Single	ARB-B2-LED-D1-T5	S2A	0.900	4529	41	328
□	7	PARKING LOT POLES	Single	GALN-SA4D-740-U-T4W	S2	0.900	30625	245	1715

Calculation Summary								
Label	CalcType	Units	Avg	Max	Min	Avg/Min	Max/Min	
Front Entry and Sidewalks	Illuminance	Fc	3.81	7.6	1.7	2.24	4.47	
Parking Lot	Illuminance	Fc	1.47	7.0	0.5	2.94	14.00	
Replaced Street Lights South	Illuminance	Fc	0.26	4.8	0.0	N.A.	N.A.	
Side Entrance	Illuminance	Fc	2.51	6.4	0.9	2.79	7.11	



Lamar Johnson Collaborative
 8640 EVANS AVE
 ST. LOUIS, MISSOURI 63134
 PH: 314.423.9100

OWNER
 SAINT LOUIS COUNTY LIBRARY
 LANDSCAPE ARCHITECT
 LAMAR JOHNSON COLLABORATIVE
 CIVIL ENGINEER
 STOCK AND ASSOCIATES
 STRUCTURAL ENGINEER
 DAVID MASON + ASSOCIATES
 MEP - FP ENGINEER
 IMEG
 AV ENGINEER
 TIE CONSULTING LLC



GEORGE M. STOCK E-25116
 CIVIL ENGINEER
 CERTIFICATE OF AUTHORITY
 NUMBER: 003994

SLCL - CHESTERFIELD BRANCH
 St. Louis County Library
 16400 Burkhardt Pl., Chesterfield, MO 63017
 AMENDED SITE DEVELOPMENT PLAN

DRAWING ISSUE	
DESCRIPTION	DATE
ASDSP SUBMISSION	03/19/25
ASDSP SUBMISSION R1	04/18/25
SD Set	04/29/25
ASDSP SUBMISSION R2	05/21/25

BUILDING MAP

DRAWING TITLE
 SITE LIGHTING
 PHOTOMETRIC PLAN

DRAWING NO.
C0.300

Job # 25.000000



**ARCHITECTURAL REVIEW BOARD
Project Statistics and Checklist**

Date of First Comment Letter Received from the City of Chesterfield _____

Project Title: _____ **Location:** _____

Developer: _____ **Architect:** Lamar Johnson Collaborative **Engineer:** Civil: Stock & Associates, MEP: IMEG, Structural: David Mason

PROJECT STATISTICS:

Size of site (in acres): _____ **Total Square Footage:** _____ **Building Height:** _____

Proposed Usage: _____

Exterior Building Materials: _____
Corrugated Metal Panel, Engineered Wood Panels, Stone Panel Cladding, High Performance Curtain Wall Glazing

Roof Material & Design: _____

Screening Material & Design: _____

Description of art or architecturally significant features (if any): _____

Architecture: Curved facade profile along North and South facades, custom corrugated metal panel pattern, 12' recessed reading patio on the south facing adjacent landscape park, recessed curtain wall corners to provide natural light into the library and views out to the garden and neighborhood

ADDITIONAL PROJECT INFORMATION:

Checklist: Items to be provided in an 11" x 17" format

- Color Site Plan with contours, site location map, and identification of adjacent uses.**
- Color elevations for all building faces.**
- Color rendering or model reflecting proposed topography.**
- Photos reflecting all views of adjacent uses and sites.**
- Details of screening, retaining walls, etc.**
- Section plans highlighting any building off-sets, etc. (as applicable)**
- Architect's Statement of Design which clearly identifies how each section in the Standards has been addressed and the intent of the project.**
- Landscape Plan.**
- Lighting cut sheets for any proposed building lighting fixtures. (as applicable)**
- Large exterior material samples. (to be provided 1 week prior to ARB meeting)**
- Any other exhibits which would aid understanding of the design proposal. (as applicable)**
- Pdf files of each document required.**

St. Louis County Library - Chesterfield Branch

Architect Statement of Design

Lamar Johnson Collaborative

Designed by Lamar Johnson Collaborative, the new Chesterfield Library Branch will provide a place for the Chesterfield community to gather and create a sense of community, social interaction, learning and relaxation. The goal through the design is to create a sense of belonging both inside the building and in the surrounding landscape. The 20,700 SF library will be home to an adult collection, teen room, children's room, multipurpose room, ample study rooms, and a variety of seating and workstations to host the community. Within the library there will also be a café serving local coffee and refreshments. Additionally, adjacent to the library is a park and garden, which will receive upgrades that enhance the usability and with will create a lush, more robust landscape for the community to use.

The proposed design has been developed with a strong commitment to quality, contextual sensitivity, and long-term community value.

Scale

The scale of the building has been carefully considered in relation to surrounding developments. The massing and height have been designed to create a balanced streetscape while remaining consistent with adjacent structures. The scale ensures a pedestrian-friendly experience and seamless integration into the neighborhood fabric.

Architectural Design

The overall design expresses SLCL's commitment to creating state of the art libraries that serve as architectural beacons for the community. The simple yet prominent curved roofline of the building took inspiration from the undulating topography and pathways of the adjacent park. To reduce the heaviness of the massing, each corner of the building has been carved into with floor to ceiling glazing, which helps bring both transparency and natural light into the building and alleviates the potential massiveness of the form. The building is sited to take advantage of solar orientation and optimize views to the adjacent garden and landscape. The south park facing façade is centered with a deep recessed reading patio with floor to ceiling glazing to prioritize daylight and views outside. This exterior patio allows for a covered space to extend the library's program outside to connect with the landscape. Ultimately, the building's proportions, rooflines, and fenestration patterns have been thoughtfully arranged to promote visual interest and architectural cohesiveness across all elevations. Since each side of the building is highly visible, great care and thought was taken to make each elevation unique and identifiable but also a cohesive and engaging design responsive to the inherent pedestrian scale of the building. Each facade has been given architectural attention, with modulation, depth, and detailing that avoid monotony. Features such as overhangs, window trim, material transitions, and vertical breaks contribute to the human scale and reflect a consistent design language. Entrances are clearly defined and welcoming, providing an active edge along public frontages with accessibility to parking. With the desire to create a welcoming, aesthetically beautiful new branch for SLCL in Chesterfield, our design promotes the potential that 21st century libraries have as architectural beacons in a community.

Materials and Colors

High-quality, durable materials have been selected to ensure longevity and minimal maintenance. The palette includes corrugated metal panel painted a rich dark bronze, local Missouri stone panels, engineered wood panels, and ample floor to ceiling curtain walls. Care was taken to select complementary earth-tone colors that harmonize with the natural and built surroundings. The corrugated dark bronze metal panel will use a series of different profiles to create a rhythmic, one-of-a-kind façade pattern that will bring another level of architectural interest to the building and the community. Accent materials, the stone and engineered wood, provide contrast and additional texture without overwhelming the overall composition. This approach meets the standards for materials and colors, ensuring longevity and minimal maintenance, keeping the building aesthetically vibrant for years to come. Finally, variations of these materials can be found in the surrounding buildings of Wildhorse Village, further incorporating this library into the Chesterfield community.

Landscape Design and Screening

The new library landscape design fosters community connection, supports sustainability, and anticipates future growth. The building is strategically sited along the northern edge of the property, with vehicular access from the interior Main Circle Drive to accommodate anticipated traffic volumes and strengthen engagement with the adjacent park. Parking is shifted toward Chesterfield Parkway and held below grade to preserve open views toward the clearly defined main entry. A welcoming arrival garden greets patrons and staff, while a reading terrace offers outdoor workspace with visual connections to the park and a reimagined rain garden. This rain garden serves as a prominent landscape feature, linked by a pedestrian bridge to an enhanced reading garden designed for small group gatherings and quiet reflection. A new park pavilion with a permanent roof provides shelter year-round. Native and adaptive plantings contribute to ecological health, support stormwater management, and provide visual interest in every season. Screening elements—including evergreen buffers and service enclosures—are thoughtfully integrated to discreetly shield parking and mechanical areas in accordance with design standards.

Lighting

Exterior lighting is designed to provide safety and security without producing glare or spillover. Pedestrian landscape fixtures are full cutoff and down-directed to preserve night skies and minimize disturbance to neighboring properties. Accent lighting is used selectively to highlight architectural features and landscape focal points around all four elevations of the building.



SLCL - CHESTERFIELD BRANCH
ILLUSTRATIVE SITE PLAN



WILDHORSE VILLAGE NEW TOWNHOMES



WILDHORSE APARTMENTS



RESIDENTIAL HOMES



CHESTERFIELD FAMILY YMCA



CHESTERFIELD AMPITHEATER



1 MONARCH TRACE



ACE HOTEL



TERRACES AT WILDHORSE VILLAGE



16150 MAIN CIRCLE DRIVE



FLATS AT WILDHORSE VILLAGE



PARQ AT CHESTERFIELD APARTMENTS



THE LUMIERE OF CHESTERFIELD

SLCL - CHESTERFIELD BRANCH
ADJACENT USES OF THE SITE



NORTH ELEVATION



SOUTH ELEVATION

1. DARK BRONZE CORRUGATED ALUMINUM METAL PANEL, CONCEALED FASTENERS

3. STONE PANEL, HONED FINISH

4. ENGINEERED WOOD PANELS

2. CURTAIN WALL GLAZING



EAST ELEVATION



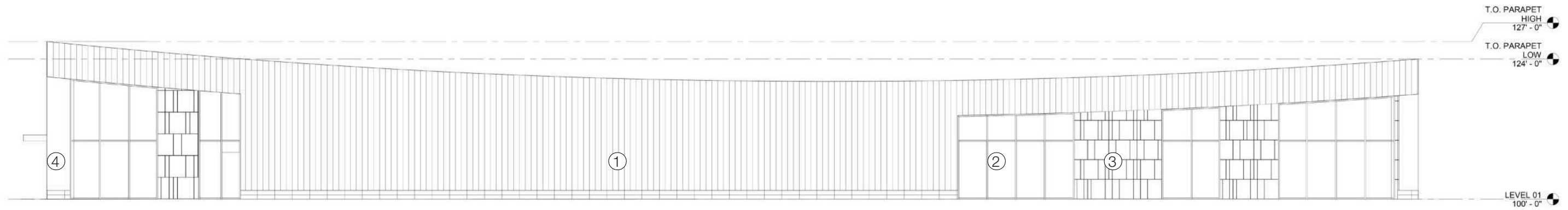
WEST ELEVATION

1. DARK BRONZE CORRUGATED ALUMINUM METAL PANEL, CONCEALED FASTENERS

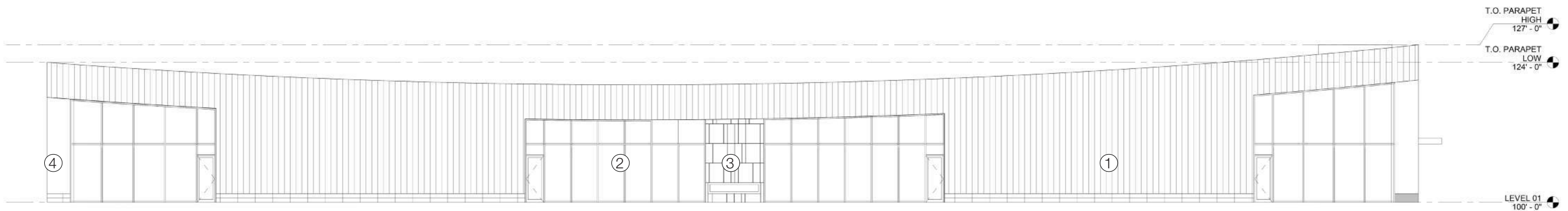
3. STONE PANEL, HONED FINISH

4. ENGINEERED WOOD PANELS

2. CURTAIN WALL GLAZING

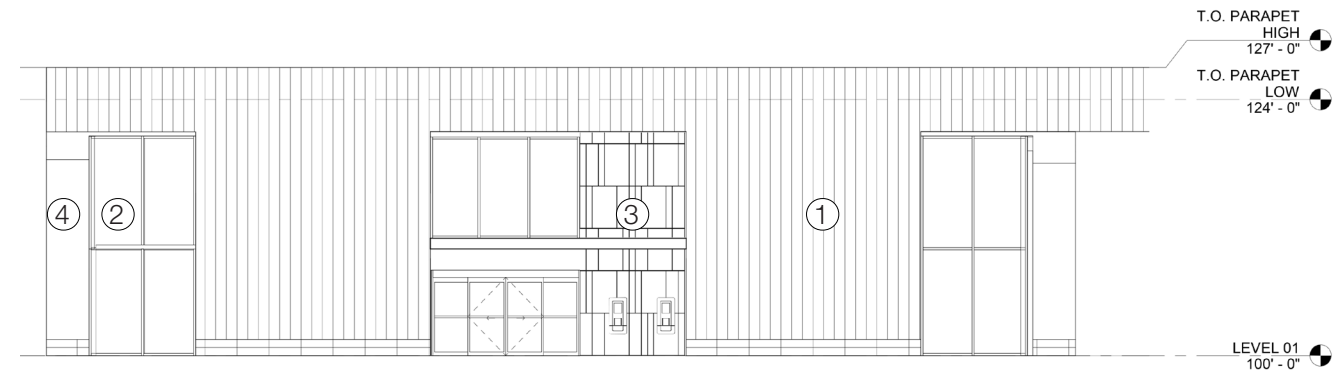


NORTH ELEVATION

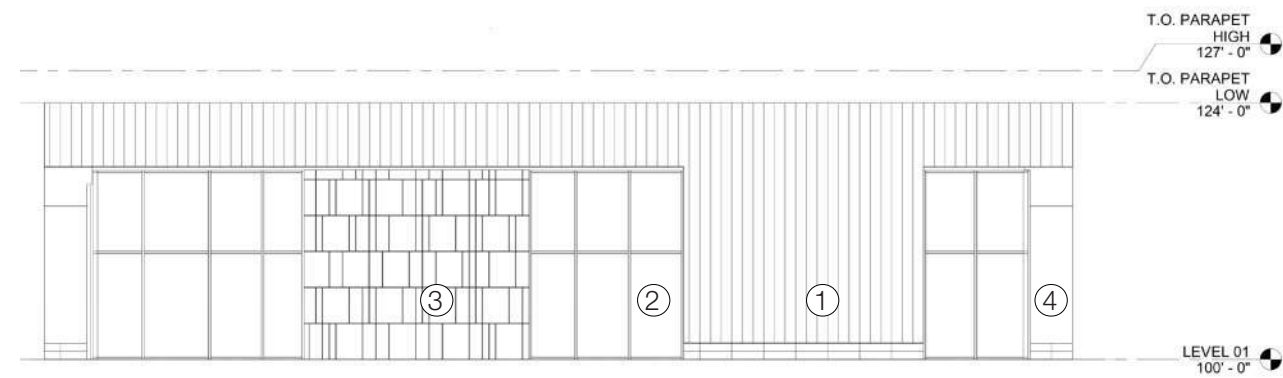


SOUTH ELEVATION

- | | |
|---|------------------------------|
| 1. DARK BRONZE CORRUGATED ALUMINUM METAL PANEL, CONCEALED FASTENERS | 3. STONE PANEL, HONED FINISH |
| 2. CURTAIN WALL GLAZING | 4. ENGINEERED WOOD PANELS |

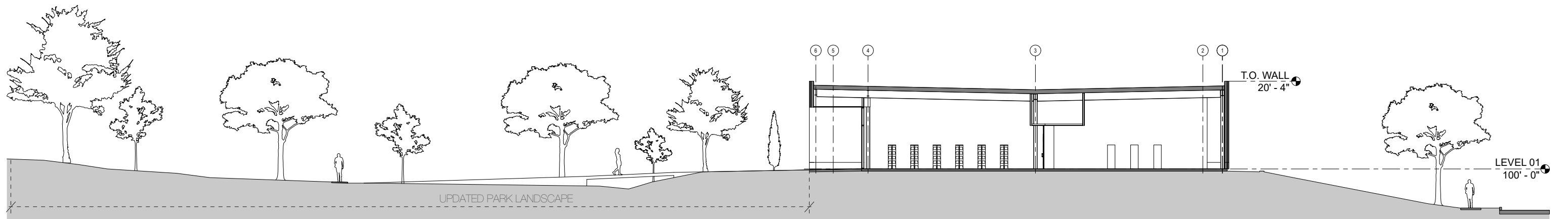


EAST ELEVATION

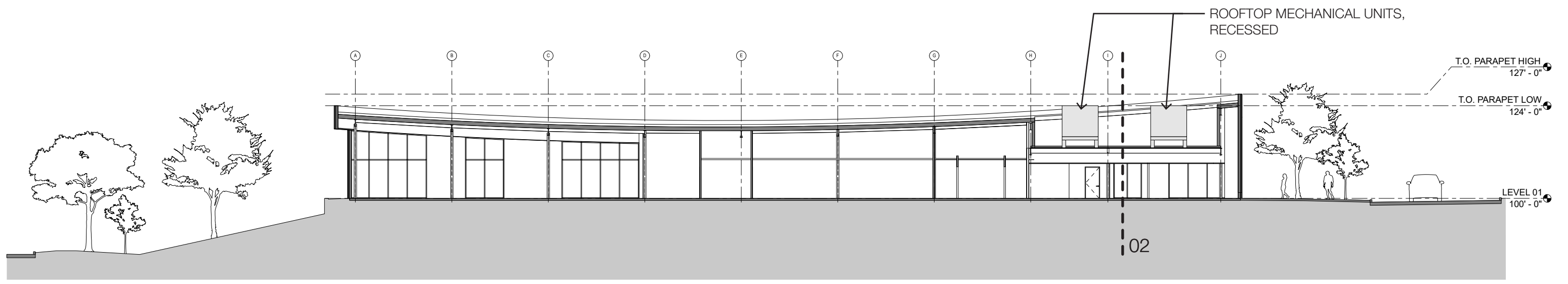


WEST ELEVATION

- | | |
|---|------------------------------|
| 1. DARK BRONZE CORRUGATED ALUMINUM METAL PANEL, CONCEALED FASTENERS | 3. STONE PANEL, HONED FINISH |
| 2. CURTAIN WALL GLAZING | 4. ENGINEERED WOOD PANELS |



SECTION A - TRANSVERSE SECTION LOOKING WEST



SECTION B - LONGITUDINAL SECTION LOOKING NORTH_01



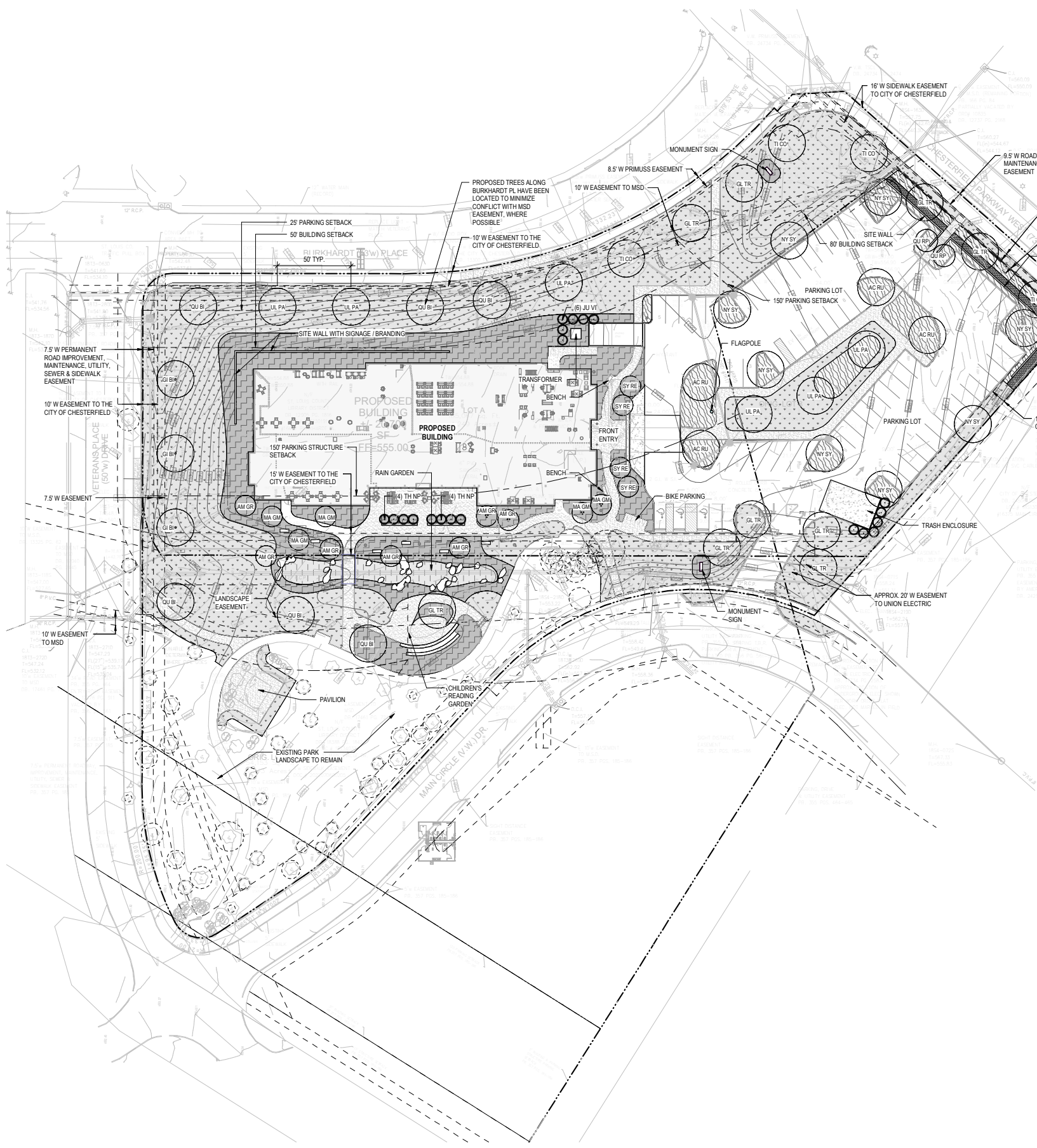
SECTION B - LONGITUDINAL SECTION LOOKING NORTH_02











LEGEND

SYM	DESCRIPTION
(Circle with dot)	DECIDUOUS CANOPY TREES
(Circle with cross)	DECIDUOUS UNDERSTORY TREES
(Circle with star)	EVERGREEN TREES
(Circle with dashed line)	EXISTING TREE TO REMAIN (CRITICAL ROOT ZONE)
(Square with dots)	LAWN - SOG
(Square with diagonal lines)	MIXED PLANTING 1 - PARKING LOT 50% MIXED SHRUBS (3 Gal. @ 48" O.C.) 50% PERENNIALS (1 Qt. @ 18" O.C.) AND ORNAMENTAL GRASSES (1 Gal. @ 18" O.C.)
(Square with horizontal lines)	MIXED PLANTING 2 - BUILDING 25% MIXED SHRUBS (3 Gal. @ 48" O.C.) 75% PERENNIALS (1 Qt. @ 18" O.C.) AND ORNAMENTAL GRASSES (1 Gal. @ 18" O.C.)
(Square with vertical lines)	MIXED PLANTING 3 - RAIN GARDEN 100% PERENNIALS (1 Qt. @ 18" O.C.) AND ORNAMENTAL GRASSES (1 Gal. @ 18" O.C.)
(Square with cross-hatch)	MIXED PLANTING 4 - SHRUB BED 100% SHRUBS (3 Gal. @ 48" O.C.)

PROBABLE TREE PLANTING SCHEDULE

QTY	SYM	BOTANICAL NAME	CULTIVAR	COMMON NAME	SIZE	METHOD	SPACING	MATURE HEIGHT	GROWTH RATE (SIZE CLASS)
DECIDUOUS CANOPY TREES									
4	AC RU	Acer rubrum	Frank JR	Redpointe Maple	2.5' CAL	B&B	SEE PLAN	45' +	FAST (LARGE)
3	GI BI	Ginkgo biloba	Autumn Gold	Autumn Gold Ginkgo	2.5' CAL	B&B	SEE PLAN	45' +	SLOW/MEDIUM (LARGE)
9	GL TR	Gleditsia triacanthos var. inermis	Skyline	Skyline Thornless Honeylocust	2.5' CAL	B&B	SEE PLAN	45' +	FAST (LARGE)
8	NY SY	Nyssa sylvatica	Black Gum	Black Gum	2.5' CAL	B&B	SEE PLAN	30' - 50'	SLOW (MEDIUM)
6	QU BI	Quercus bicolor	Swamp White Oak	Swamp White Oak	2.5' CAL	B&B	SEE PLAN	45' +	MEDIUM (LARGE)
2	QU RP	Quercus x warei	Long REGAL PRINCE	Regal Prince Oak	2.5' CAL	B&B	SEE PLAN	40' - 60'	MEDIUM (MEDIUM)
4	TI CO	Tilia cordata	Littleleaf Linden	Littleleaf Linden	2.5' CAL	B&B	SEE PLAN	45' +	SLOW/MEDIUM (LARGE)
6	UL PA	Ulmus parvifolia	Emer II ALLEE	Alleef Lacebark Elm	2.5' CAL	B&B	SEE PLAN	45' +	MEDIUM/FAST (LARGE)
EVERGREEN TREES									
12	JU VI	Juniperus virginiana	Canerti	Canerti Juniper	6' Ht. Min.	B&B	SEE PLAN	30' - 40'	MEDIUM (MEDIUM)
8	TH NP	Thuja occidentalis	Art Boe NORTH POLE	North Pole Arborvitae	6' Ht. Min.	B&B	SEE PLAN	10' - 15'	SLOW (SMALL)
DECIDUOUS UNDERSTORY TREES									
7	AM GR	Ametancther x grandiflora	Autumn Brilliance	Autumn Brilliance Serviceberry	6' Ht. Min. (Multi-Stem)	B&B	SEE PLAN	25' - 30'	SLOW/MEDIUM (MEDIUM)
5	MA GM	Magnolia virginiana	Green Mile	Green Mile Magnolia	2.5' CAL	B&B	SEE PLAN	15' - 25'	MEDIUM (SMALL)
4	SY RE	Syringa reticulata	Japanese Tree Lilac	Japanese Tree Lilac	6' Ht. Min. (Multi-Stem)	B&B	SEE PLAN	25' - 30'	MEDIUM (SMALL)

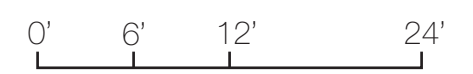
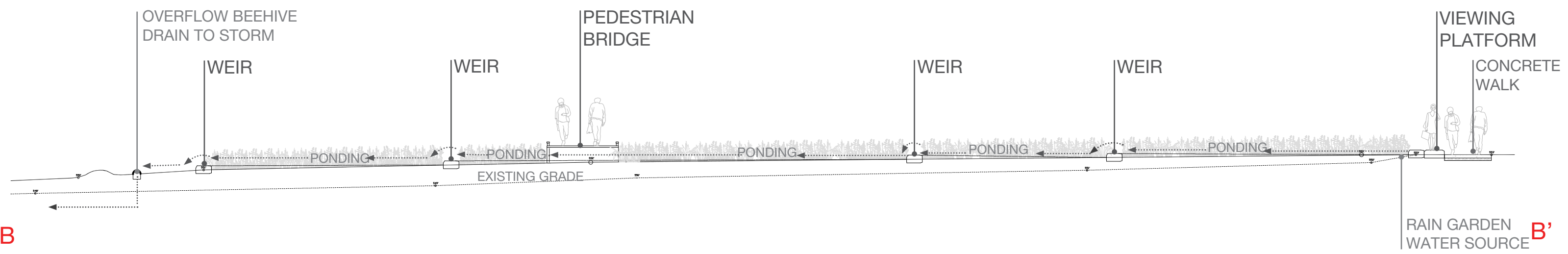
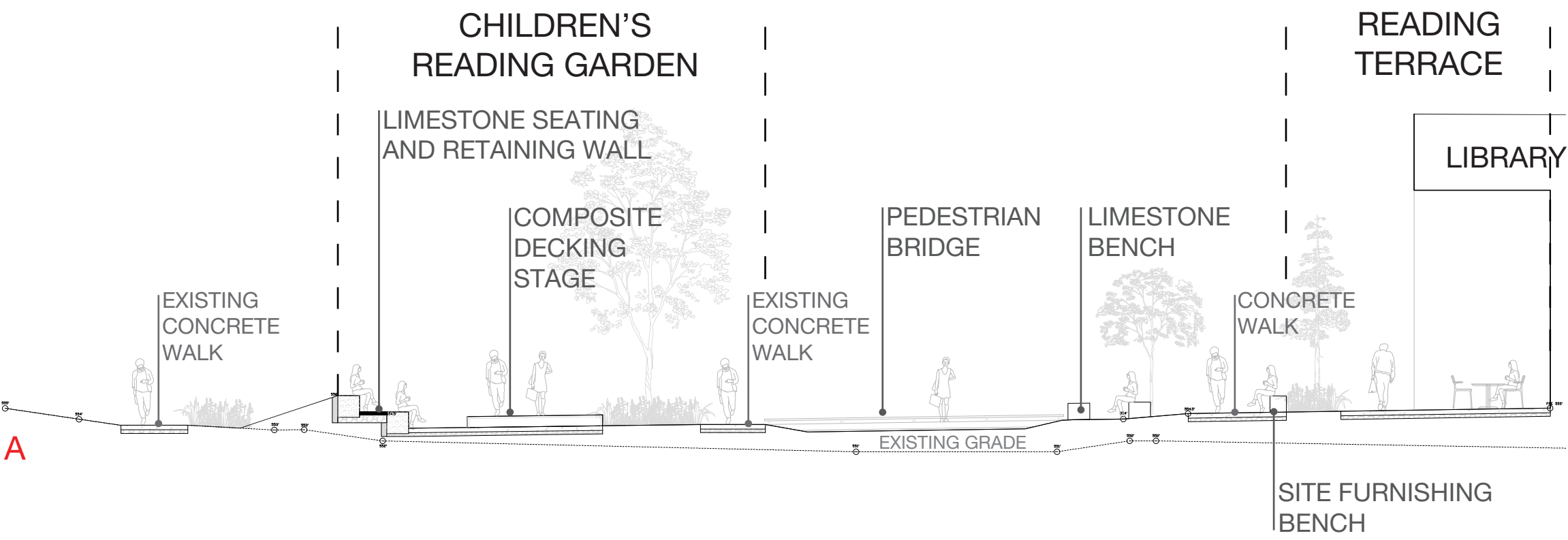
PROBABLE MIXED PLANTING SCHEDULE

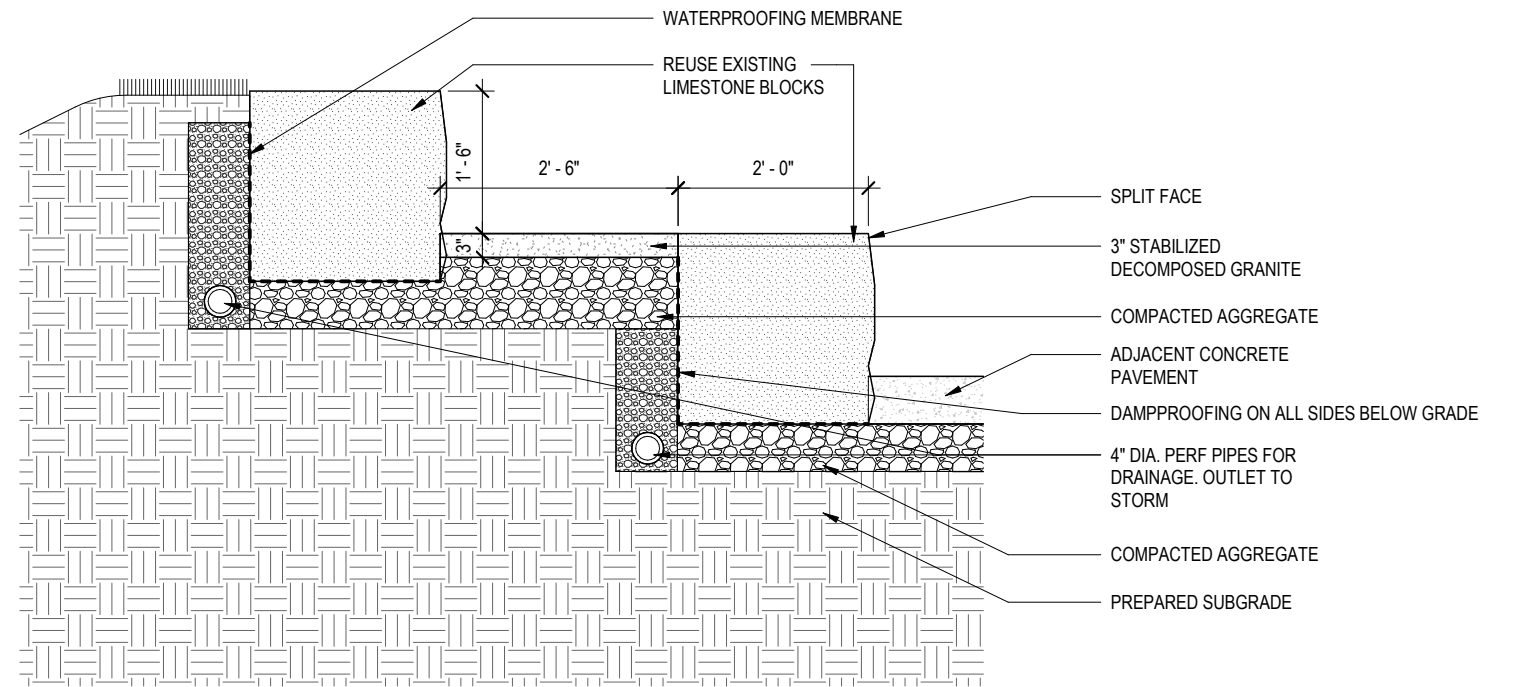
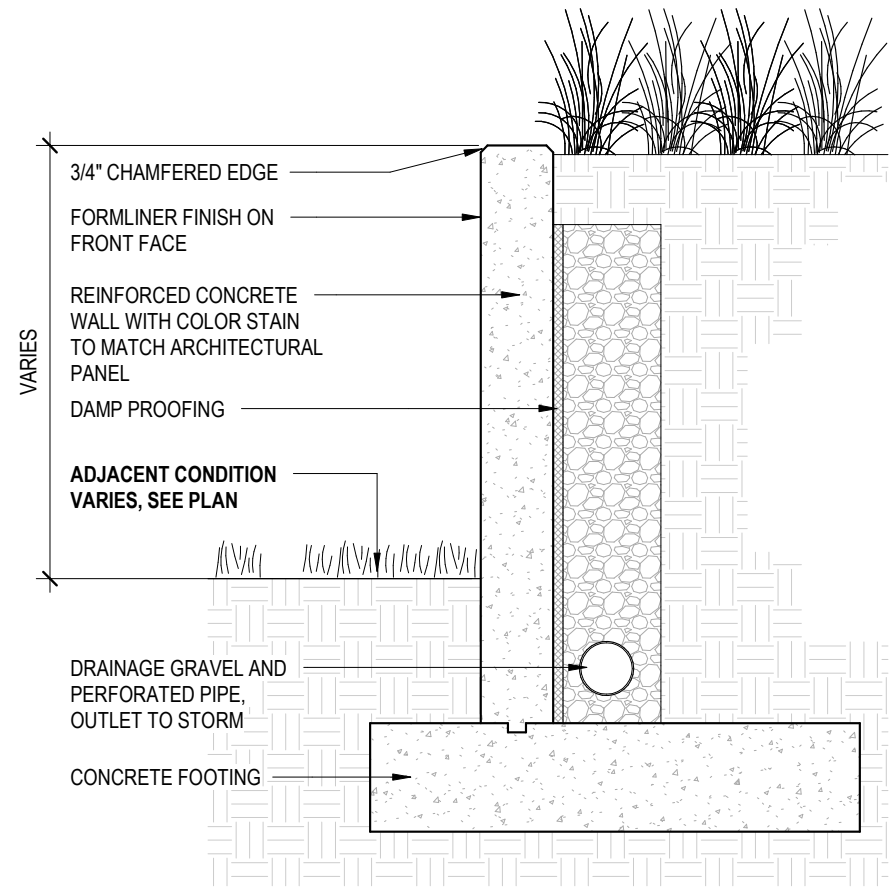
QTY	SYM	BOTANICAL NAME	CULTIVAR	COMMON NAME	SIZE	METHOD	SPACING	COMMENTS
DECIDUOUS SHRUBS								
	ar me	Aronia melanocarpa	Autumn Magic	Black Chokeberry	3 Gal.	Container	48" O.C.	
	hy th	Hydrangea quercifolia	Little Honey	Oakleaf Hydrangea	3 Gal.	Container	48" O.C.	
	rh gr	Rhus aromatica	Gro-Low	Gro-Low Sumac	3 Gal.	Container	48" O.C.	
EVERGREEN SHRUBS								
	ju gr	Juniperus virginiana	Grey Owl	Grey Owl Juniper	3 Gal.	Container	48" O.C.	
	ta me	Taxus x media	Densiformis	Densiformis Yew	3 Gal.	Container	48" O.C.	
HERBACEOUS PERENNIALS								
	al	Allium	Summer Beauty	Summer Beauty	1 Qt.	Container	18" O.C.	
	am	Amsonia hubrichtii	Montrose White	Hubricht's Bluestar	1 Qt.	Container	18" O.C.	
	ca	Calamintha nepeta	Montrose White	Montrose White Calamint	1 Qt.	Container	18" O.C.	
	ec	Echinacea purpurea	Autumn Bride	Purple Coneflower	1 Qt.	Container	18" O.C.	
	ha	Heuchera villosa	Kobold	Autumn Bride Heuchera	1 Qt.	Container	18" O.C.	
	lk	Liatris spicata	Kobold	Kobold Blazing Star	1 Qt.	Container	18" O.C.	
	nc	Nepeta	Caf's Pajamas	Caf's Pajamas Catmint	1 Qt.	Container	18" O.C.	
	pb	Pieris japonica	Blue Jean Baby	Russian Sage	1 Qt.	Container	18" O.C.	
	ru	Rudbeckia	American Goldrush	American Goldrush	1 Qt.	Container	18" O.C.	
	st	Stachys officinalis	Hummelo	Hummelo Betony	1 Qt.	Container	18" O.C.	
	sy	Symphoricarpos	Purple Dome	Purple Dome Aster	1 Qt.	Container	18" O.C.	
ORNAMENTAL GRASSES AND SEDGES								
	cm	Carex muskinquensis	Palm Sedge	Palm Sedge	1 Gal.	Container	18" O.C.	
	pa	Panicum virgatum	Northwind	Northwind Switchgrass	1 Gal.	Container	18" O.C.	
	ae	Sesleria autumnalis	Autumn Moor	Autumn Moor Grass	1 Gal.	Container	18" O.C.	
	sp	Sporobolus heterolepis	Prairie Dropseed	Prairie Dropseed	1 Gal.	Container	18" O.C.	
HERBACEOUS PERENNIALS - RAIN GARDEN								
	al	Amsonia illustris	Shining Bluestar	Shining Bluestar	1 Qt.	Container	18" O.C.	
	as	Asclepias incarnata	Red Milkweed	Red Milkweed	1 Qt.	Container	18" O.C.	
	ac	Aster cordifolius	Blue Wood Aster	Blue Wood Aster	1 Qt.	Container	18" O.C.	
	ec	Echinacea purpurea	Purple Coneflower	Purple Coneflower	1 Qt.	Container	18" O.C.	
ORNAMENTAL GRASSES AND SEDGES - RAIN GARDEN								
	cm	Carex muskinquensis	Palm Sedge	Palm Sedge	1 Gal.	Container	18" O.C.	
	pa	Panicum virgatum	Heavy Metal	Heavy Metal Switchgrass	1 Gal.	Container	18" O.C.	

1 LANDSCAPE PLAN
U4.106 1" = 30'-0"



NOTES:
1. WHERE PROVIDED, AREA TAKEOFFS AND PLANT QUANTITY ESTIMATES IN PLANTING SCHEDULE ARE FOR INFORMATION ONLY. CONTRACTOR IS RESPONSIBLE TO DO THEIR OWN QUANTITY TAKEOFFS FOR ALL PLANT MATERIAL AND SIZES SHOWN ON THE DRAWINGS. IN CASE OF DISCREPANCIES, BRING TO THE ATTENTION OF THE LANDSCAPE ARCHITECT FOR CLARIFICATION.

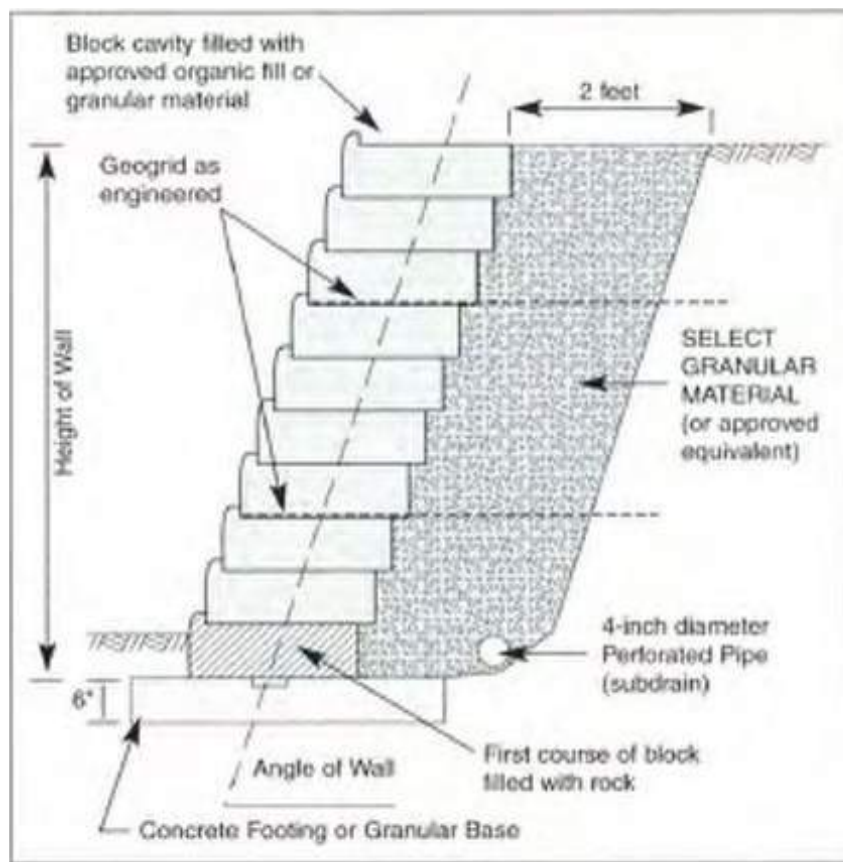




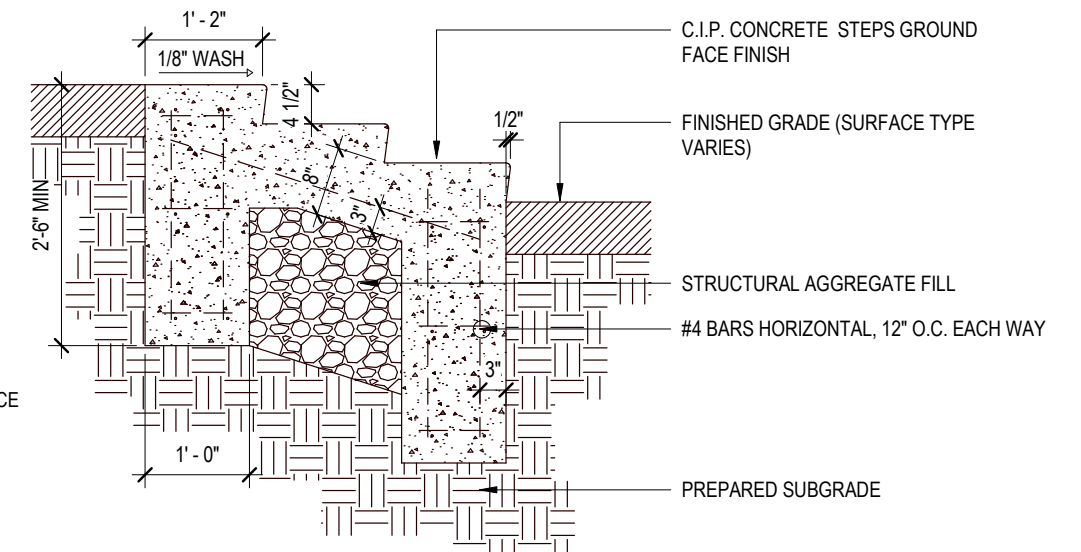
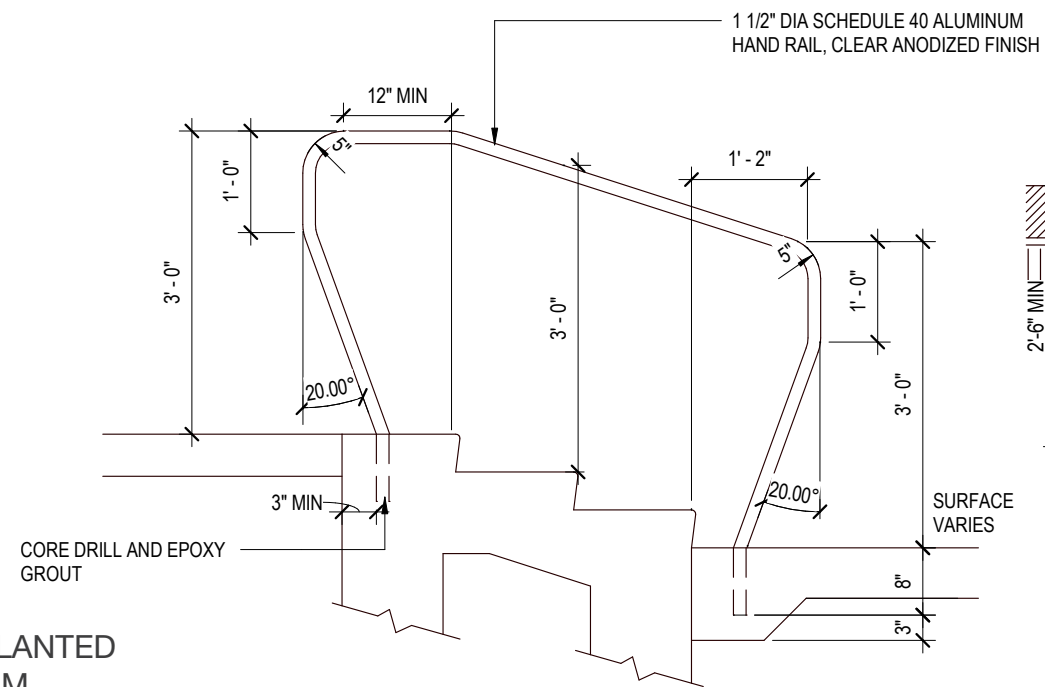
CAST IN PLACE CONCRETE RETAINING WALL WITH FORMLINER



LIMESTONE MILLBLOCK SEATING AND RETAINING WALLS



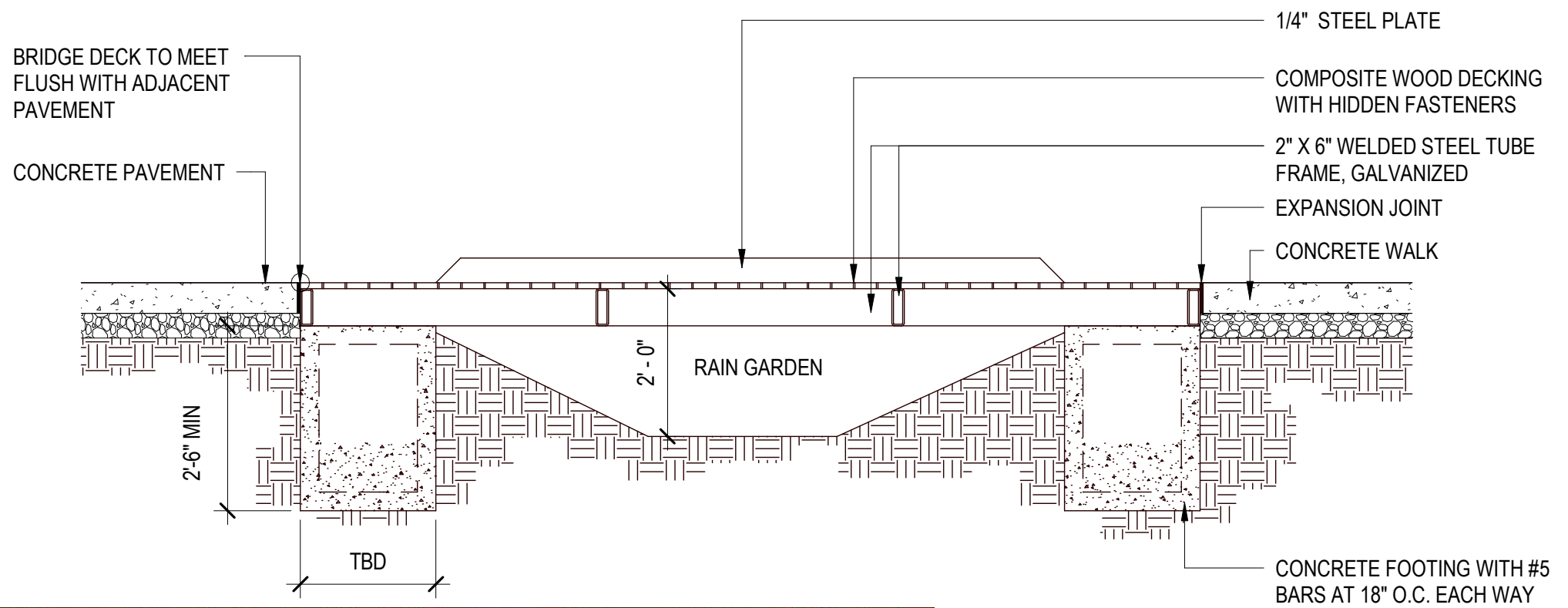
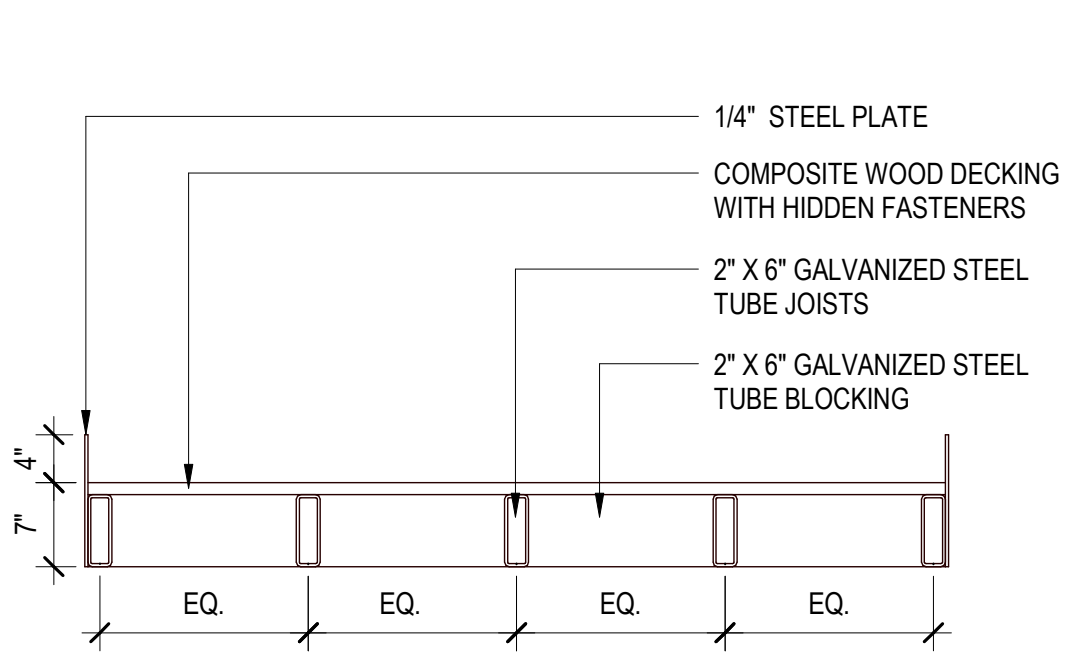
WALL TO PLANTED WITH SEDUM



ALPENSTEIN RETAINING WALL

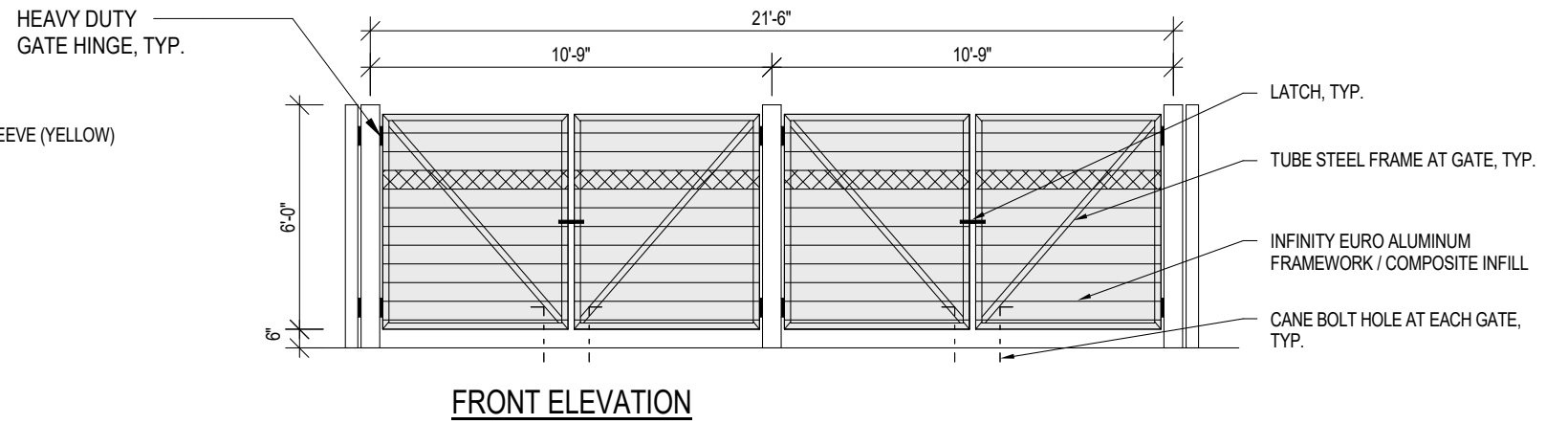
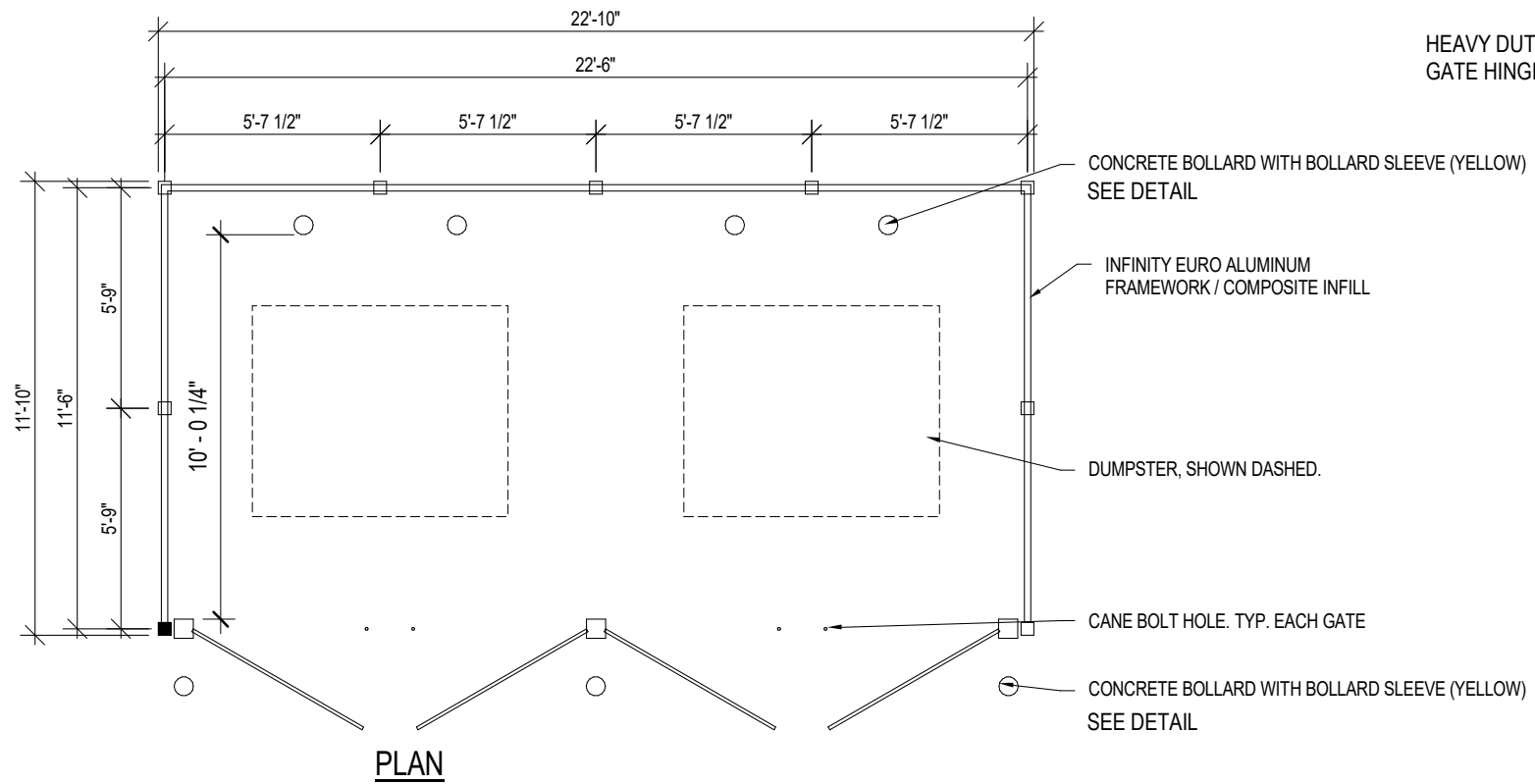


CONCRETE STAIR WITH HANDRAIL



PEDESTRIAN BRIDGE

SLCL - CHESTERFIELD BRANCH
 SITE DETAILS



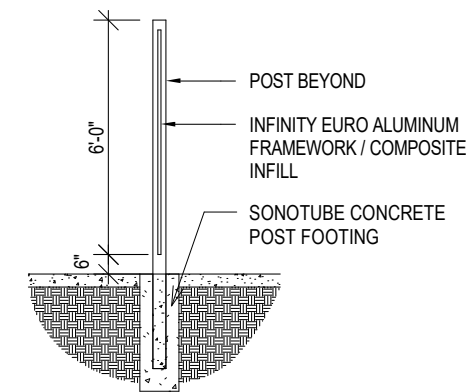
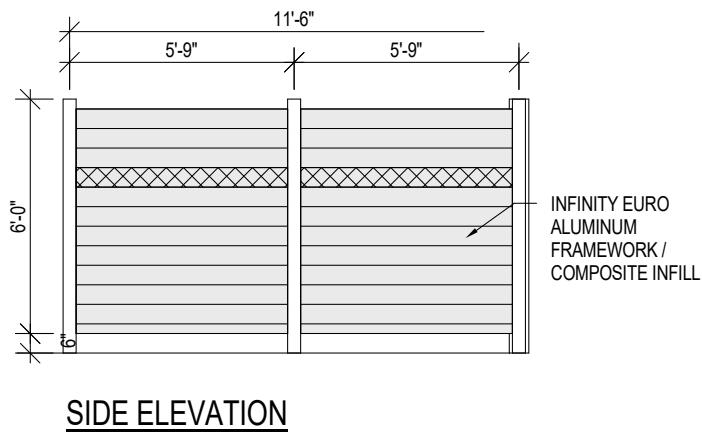
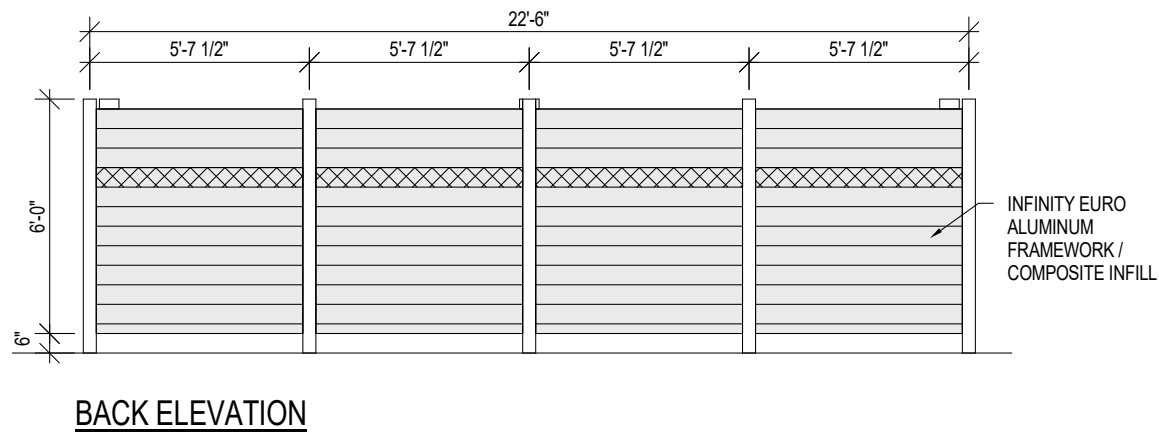
HEAVY DUTY GATE HINGE

Commercial / Industrial Adjustable 180° Hinge	.625" - 2.5"	MHH180*	1 pr	7 lbs
---	--------------	---------	------	-------

For use with: Montage Plus Gates | Montage II Gates | Aegis Plus Gates | Aegis II Gates | Echelon Plus Gates | Echelon II Gates | Estate Gates

NOT FOR USE with gate leaves weighing over 420 lbs.

** Available in BLACK only*



FRONT ELEVATION PHOTO



**SIDE PHOTO
TRASH ENCLOSURE**

TO MATCH EXISTING LIGHTS ON VETERANS PL DR



FEATURES

- Reliable, uniform, glare free illumination
- Types II, III, IV, V and custom distributions¹
- 3000K, 4000K, 5000K CCT
- 0-10V dimming ready
- Integral surge suppression
- LifeShield™ thermal protection
- 13 standard powder coat finishes
- Upgrade Kits
- ANSI C136.31-2010 3G Rated

SPECIFICATIONS

The first dimension is the height of fixtures with LEDs or horizontal reflectors.
EPA for horizontal configuration only.

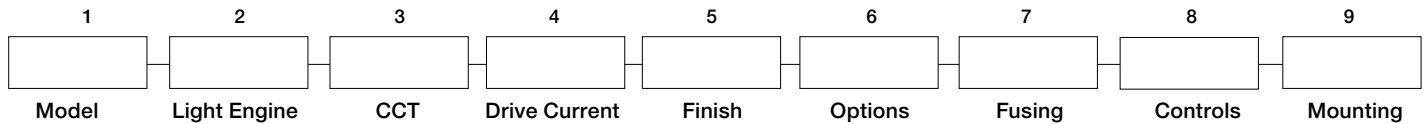
HOOD	NO LUMINOUS	4 LUMINOUS WINDOW (WND)	SOLID RINGS (SR)	VERTICAL SLOTS (VSL)	LUMINOUS RINGS (LUM)
Angled (ANG) DIA: 30"/760 mm	 HT: 21.4"/454 mm WT: 47 lbs EPA: 1.12	 HT: 26.7"/680 mm WT: 28.55 lbs EPA: .60	 HT: 26.7"/680 mm WT: 55 lbs EPA: 1.36	 HT: 26.7"/680 mm WT: 48 lbs EPA: 1.35	 HT: 26.7"/680 mm WT: 50 lbs EPA: 1.36
Bell (BEL) DIA: 30"/760 mm	 HT: 22"/560 mm WT: 47 lbs EPA: 1.16	 HT: 26.7"/680 mm WT: 48 lbs EPA: 1.38	 HT: 26.7"/680 mm WT: 55 lbs EPA: 1.39	 HT: 26.7"/680 mm WT: 48 lbs EPA: 1.38	 HT: 26.7"/680 mm WT: 50 lbs EPA: 1.39
Flared (FLR) DIA: 32"/810 mm	 HT: 21"/535 mm WT: 47 lbs EPA: 1.05	 HT: 26.7"/680 mm WT: 48 lbs EPA: 1.27	 HT: 26.7"/680 mm WT: 55 lbs EPA: 1.28	 HT: 26.7"/680 mm WT: 48 lbs EPA: 1.27	 HT: 26.7"/680 mm WT: 50 lbs EPA: 1.28
Skirted Bell (SKB) DIA: 32"/810 mm	 HT: 27.25"/693 mm WT: 48 lbs EPA: 1.72	 HT: 32.5"/826 mm WT: 49 lbs EPA: 1.95	 HT: 32.25"/820 mm WT: 56 lbs EPA: 1.96	 HT: 32.5"/826 mm WT: 49 lbs EPA: 1.95	 HT: 32.25"/820 mm WT: 50 lbs EPA: 1.96



3000K unit or 3000K without luminous element only

TO MATCH EXISTING LIGHTS ON VETERANS PL DR

ORDERING INFORMATION



1. MODEL

UCL	<i>Universe large without luminous element</i>
UCL-WND	<i>Universe large with luminous window</i>
UCM-SR	<i>Universe large with luminous solid rings</i>
UCM-VL	<i>Universe large with luminous vertical slots</i>
UCL-LUM	<i>Universe large with luminous rings</i>

2. HOOD (May choose one)

FLR	<i>Flared hood</i>
FLR-STSS	<i>Flared hood in natural brushed stainless steel</i>
FLR-COP	<i>Flared hood in natural brushed copper</i>
ANG	<i>Angled hood</i>
ANG-STSS	<i>Angled hood in natural brushed stainless steel</i>
ANG-COP	<i>Angled hood in natural brushed copper</i>
BEL	<i>Bell hood</i>
BEL-STSS	<i>Bell hood in natural brushed stainless steel</i>
BEL-COP	<i>Bell hood in natural brushed copper</i>
SKB	<i>Skirted bell hood</i>
SKB-STSS	<i>Skirted bell hood in natural brushed stainless steel</i>
SKB-COP	<i>Skirted bell hood in natural brushed copper</i>

2. LIGHT ENGINE

MicroCore Precision aimed optics

T2-56LED	<i>Type II</i>
T3-56LED	<i>Type III</i>
T4-56LED	<i>Type IV</i>
T5-56LED	<i>Type V</i>

3. COLOR TEMPERATURE

3K	<i>3000K CCT, 70CRI</i>
4K	<i>4000K CCT, 70CRI</i>
5K	<i>5000K CCT, 70CRI</i>

Additional CCT's and 560nm monochromatic amber available by request.¹

4. DRIVE CURRENT

700	<i>700mA, 132 watts</i>
450	<i>450mA, 84 watts</i>

5. FINISH

Standard Color

AGN	<i>Antique Green</i>
BL	<i>Black</i>
BLT	<i>Matte Black</i>
CRT	<i>Corten</i>
DB	<i>Dark Bronze</i>
DGN	<i>Dark Green</i>
GT	<i>Graphite</i>
LG	<i>Light Grey</i>
MAL	<i>Matte Aluminum</i>
MDB	<i>Bronze Metallic</i>
MG	<i>Medium Grey</i>
TT	<i>Titanium</i>
WH	<i>Arctic White</i>
WDB	<i>Weathered Bronze</i>
VBU	<i>Verde Blue</i>

Premium Color

SHK	<i>Shamrock</i>
SPP	<i>Salt and Pepper</i>
SFM	<i>Seafoam</i>
WCP	<i>Weathered Copper</i>
RAL	<i>RAL 4 digit Color</i>
CUSTOM	<i>Custom Color</i>

6. OPTIONS

Luminous Element May choose one

BLU	<i>Blue inner lens</i>
RD	<i>Red inner lens</i>
GRN	<i>Green inner lens</i>
SLC	<i>Unlit during normal operation</i>

Lens May choose one

FTG	<i>Clear flat glass lens</i>
FLD	<i>Lightly diffused flat glass lens</i>
HSS	<i>House Side shield for Type 4</i>

7. FUSE

<i>(may choose one)</i>	
SF	<i>120, 277, 347 Volt input</i>
DF	<i>208, 240, 480 Volt input</i>

8. CONTROL

<i>(may choose one)</i>	
PCA-C	<i>Photocell Adapter, Contemporary</i>
SCP	<i>Pole Accessory, Motion + Photo Control²</i>

9. MOUNTING – Must choose one

POLE MOUNT

SLA3	SLA7	SLA7(5)
SLA8D-4	SLA8D-5	SLA9
SLA10	SLA16	SLA17
SLA17(5)	SLA18	SLA20
SLA20A	SLA20	SLA20C
SLA20D	SLA22D-4	SLA22D-5
SLA24	SLA24(5)	TRA4
TRA7	TRA8TRA9	

POLE MOUNT TWIN

SLA7-2	SLA7(5)-2	SLA9-2
SLA10-2	SLA16-2	SLA17-2
SLA17(5)-2	SLA18-2	SLA20-2
SLA20A-2	SLA20B-2	SLA20C-2
SLA20D-2	SLA24-2	SLA24(5)-2
TRA4-2	TRA7-2	TRA8-2
TRA9-2		

WALL MOUNT

WMA4	WMA5	WMA8
WMA9D	WMA10	WMA11
WMA12	WMA16	WMA17
WMA18	WMA20	WMA22D
WMA24	WMA37	WMA38
WMA39		

PENDANT MOUNT

PMS

[Visit www.aal.net](http://www.aal.net) for Arms, Poles & Accessories Specification Guide

¹ Contact factory

² Sensor Control Programmable – ordered separately from fixture. For complete spec sheet and ordering information, visit www.aal.net/products/sensor_control_programmable/

TO MATCH EXISTING LIGHTS ON VETERANS PL DR

LUMINAIRE PERFORMANCE

Configuration			Ordering Code	56LED-5K-700					56LED-4K-700					56LED-3K-700				
System Watts	Secondary Lens or Shield	Distribution		Bright White (5000K)					Neutral White (4000K)					Warm White (3000K)				
				Delivered Lumens	Efficacy (Lm/W)	BUG Rating			Delivered Lumens	Efficacy (Lm/W)	BUG Rating			Delivered Lumens	Efficacy (Lm/W)	BUG Rating		
130	No Lens (Standard)	Type II	T2	12962	100	3	0	3	12443	96	3	0	3	12055	93	3	0	3
		Type III	T3	13036	100	3	0	3	12515	96	3	0	3	12123	93	3	0	3
		Type IV	T4	12600	97	1	0	3	12096	93	1	0	3	11718	90	1	0	3
		Type V	T5	13321	102	4	0	2	12788	98	4	0	2	12389	95	4	0	2
	House Side Shield	Type IV	T4...HSS	8751	67	0	0	2	8401	65	0	0	2	8139	63	0	0	2
80	No Lens (Standard)	Type II	T2	8753	109	2	0	2	8402	105	2	0	2	8140	102	2	0	2
		Type III	T3	8803	110	2	0	2	8450	106	2	0	2	8186	102	2	0	2
		Type IV	T4	8508	106	1	0	2	8168	102	1	0	2	7912	99	1	0	2
		Type V	T5	8995	112	3	0	2	8635	108	3	0	2	8365	105	3	0	2
	House Side Shield	Type IV	T4...HSS	5909	74	0	0	2	5673	71	0	0	2	5496	69	0	0	2

ELECTRICAL CHARACTERISTICS

Optical System	Ordering Code		Driver									Dimming						
			LED Drive mA	System Watts	Line Voltage		Amps AC		Min. Power Factor	Max THD (%)	Operating Temp. Range	Dimming Range	Source current out of 0-10V purple wire			Absolute voltage range on 0-10V (+) purple wire		
					VAC	HZ	120	277					Min	Typical	Max	Min	Typical	Max
MicroCore	56LED	700	700	130	120-277	50/60	1.1	0.48	≥.9	20	-30°C TO +40°C	10% TO 100%	0 MA	-	8 mA	-2.0 V	-	+15 V
		450	450	80			0.71	0.31										

LED COLOR

	Ordering Code		
	3K	4K	5K
CRI Minimum	≥ 70	≥ 70	≥ 70
CCT Average	3000K	4000K	5000K

TM-21 LIFETIME CALCULATION

Ambient Environment °C	Projected Lumen Maintenance (% vs. Khrs)					Reported L70
	15	25	50	60	100	
25	93	91	87	85	78	>60Khrs

TO MATCH EXISTING LIGHTS ON VETERANS PL DR

SPECIFICATIONS

HOUSING

- All housing components shall be die-cast aluminum, sealed with continuous silicone rubber gaskets.
- Hood and spacers shall be heavy gauge spun aluminum with hemmed edges for added rigidity.
- Luminous rings shall be clear acrylic with an internal lens.
- Standard configurations do not require a flat lens, optional lenses shall be tempered glass
- All internal and external hardware shall be stainless steel.
- Optical bezel finish shall match the luminaire housing.

OPTICAL

- Patent pending MicroCore™ LED modules shall independently aim each light emitting diode (LED) in both horizontal rotation and vertical tilt angle.
- LEDs shall be mounted to a metal printed circuit board assembly (PCBA) with a uniform conformal coating over the panel surface and electrical features.
- LED optics shall be clear injection molded PMMA acrylic.
- MicroCore™ PCBA and optic shall be sealed to a die-cast anodized aluminum heat sink with an injection molded silicone rubber gasket. IP66.
- Type 4 distribution with optional House Side Shield not available with clear or diffused glass lenses. Factory installed House Side Shield is optimized for Type 4 distribution and not recommended for use with Type 2 or 3 distribution and not available with type 5 distribution.

ELECTRICAL

- Luminaires shall have integral surge protection that shall be U.L. recognized and have a surge current rating of 10,000 Amps using the industry standard 8/20uSec wave and surge rating of 372J.
- Drivers shall be U.L. recognized with an inrush current maximum of <20.0 Amps maximum at 230VAC.
- Drivers shall not be compatible with current sourcing dimmers, consult factory for current list of known compatible dimming systems, approved dimmers include Lutron Diva AVTV, Lutron Nova NFTV and NTFTV.
- LifeShield™ shall be provided with all configurations for added protection in the event of abnormally excessive high ambient temperature conditions.

CONTROLS

- SCP shall have an integral surge protection device with a current rating of 10,000 Amps using the industry standard 8/20uSec wave and surge rating of 372J
- Sensor not intended for use with additional photo-control, wireless control or dimming systems.

PHOTOCELL / EGRESS ADAPTERS

- Adapter(s) shall slip over a 4"/100mm DIA. pole with the luminaire or arm slipping over the adapter to add a total of 4.5"/114mm to the overall height. Adapter(s) shall be prewired, independently rotatable 359°, and have a cast access cover with an integral lens and lanyard.
- Photocell adapter shall include an internal twist lock receptacle. Photocell by others.
- Egress adapter shall require an auxiliary 120 volt supply for operation of an integral MR16 lamp in the event of emergency. The lamp may be aimed and locked into position with an adjustment range of 15°-45°. Adapter shall have a socket that accepts miniature bi-pin MR16 lamps up to 50 watts, lamp by others.

SERVICING

- Luminaire shall have tool-less service access to the gear compartment. Driver and surge suppressor shall be mounted to a prewired tray with quick disconnects that may be removed from the gear compartment.

ARM MOUNTING

- Luminaire shall be attached to the arm assembly with three stainless steel bolts. The connection shall be sealed with a silicone compression gasket.
- Post top arms and brackets shall slip over a 4"/100mm O.D. or a 5"/127mm as configured and secured with six stainless steel set screws.
- Wall mounted arms and brackets shall require mounting hardware by others.

FINISH

- Luminaire finish shall consist of a five stage pretreatment regimen with a polymer primer sealer, oven dry off, and top coated with a thermoset super TGIC polyester powder coat finish.
- Luminaire finish shall meet the AAMA 605.2 performance specification which includes passing a 3000 hour salt spray test for corrosion resistance.

CERTIFICATION

- Luminaire shall be listed with ETL for outdoor, wet location use, UL1598, UL 8750 and Canadian CSA Std. C22.2 no.250.

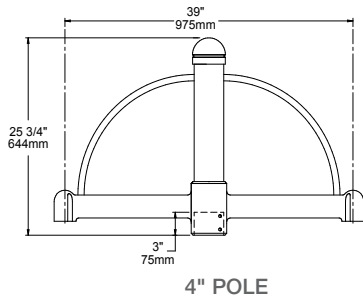
WARRANTY / TERMS AND CONDITIONS OF SALE

Download:

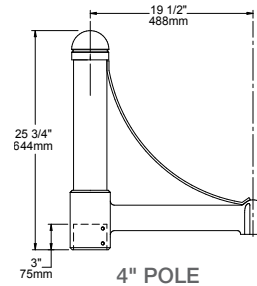
<http://www.hubbellighting.com/resources/warranty/>

TO MATCH EXISTING LIGHTS ON VETERANS PL DR

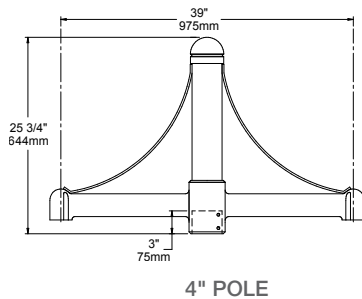
SLA20A-2 WT: 26 LBS EPA: 1.94



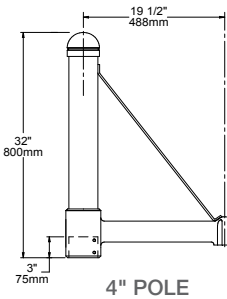
SLA20B WT: 14 LBS EPA: 1.40



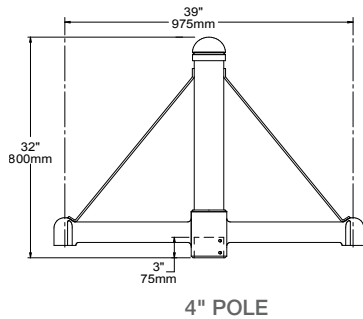
SLA20B-2 WT: 24 LBS EPA: 1.70



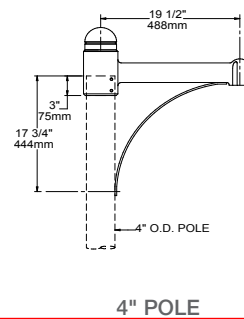
SLA20C WT: 15 LBS EPA: 1.39



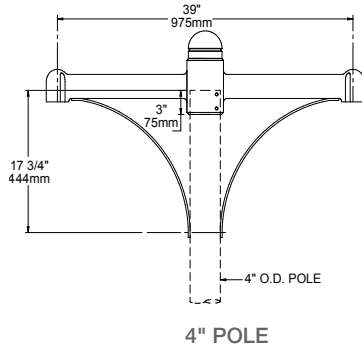
SLA20C-2 WT: 26 LBS EPA: 1.91



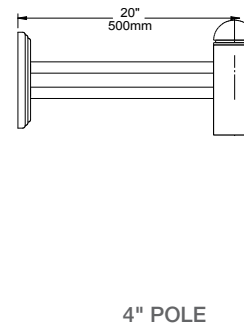
SLA20D WT: 12 LBS EPA: .75



SLA20D-2 WT: 21 LBS EPA: 1.18



SLA22D WT: 4 LBS EPA: .44



Submitted by LIGHTING ASSOC	Catalog Number: GALN-SA4D-740-U-5WQ-BZ-DIM	Type: S1A
	Notes: LAI23-295786	

Project	Catalog #	Type
Prepared by	Notes	Date



McGraw-Edison

GALN Galleon II

Area / Site Luminaire

Product Features



Interactive Menu

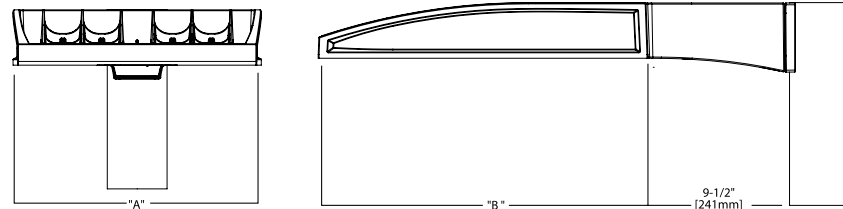
- Ordering Information page 2
- Mounting Details page 3
- Optical Distributions page 5
- Product Specifications page 5
- Energy and Performance Data page 6
- Control Options page 10

Quick Facts

- Lumen packages range from 3,300 - 73,500 (33W - 552W)
- 16 optical distributions
- Efficacy up to 159 lumens per watt

Dimensional Details

Standard Arm



Number of Light Squares	Width "A"	Housing Length "B"	Weight with Standard or QM Arm	EPA with Standard or QM Arm
1-4	16"	22"	29 lb	0.95
5-6	22"	22"	39 lb	0.95
7-9	22"	28-1/8"	48 lb	1.1

NOTES:
For arm selection requirements and additional line art, see Mounting Details section.

NOTES:
1. Visit <https://www.designlights.org/search/> to confirm qualification. Not all product variations are DLC qualified.
2. IDA Certified (3000K CCT and warmer only, fixed mounting options)



PS500052EN page 1
April 19, 2023 2:12 PM

Submitted On: Aug 22, 2023

1/11

Index Page

Submitted by LIGHTING ASSOCIATES	Catalog Number: GALN-SA4D-740-U-5WQ-BZ-DIM	Type: S1A
	Notes: LAI23-295786	

McGraw-Edison

GALN Galleon II

Ordering Information

SAMPLE NUMBER: GALN-SA4C-740-U-T4FT-QM

Product Family	Configuration	Drive Current	Color Temperature	Voltage	Distribution	Mounting	Finish
GALN-Galleon II	SA1-1 Square	A=600mA	722-790K; 2200K	U=120-277V	T2-Type II	Blank-Standard Pole Mount Arm	AP-Gray
BAA-GALN-Galleon II	SA2-2 Squares	B=800mA	727-790K; 2700K	N=247V-480V**	T2R-Type II Roadway	QM-Standard Pole Mount Arm with Quick Mount Adaptor	BZ-Brass
Buy American Act Compliant	SA3-3 Squares	C=1200mA	728-790K; 3000K	1=120V	T3-Type III	PA-Pole Mount, Adjustable	DK-Dark
TAA-GALN-Galleon II	SA4-4 Squares	D=1200mA**	735-790K; 3500K	3=240V	T3R-Type III Roadway	SP-Softflex, Adjustable*	GP-Dark Platinum
Trade Agreements Act Compliant	SA5-5 Squares	Z=Configured**	748-790K; 4000K	4=277V	T4F-Type IV Forward Three	WA-Wall Mount, Adjustable	SM-Graphite Metallic
	SA6-6 Squares		759-790K; 5000K	8=480V	T4W-Type IV Wide	MA-Mast Arm, Fixed	RY-White
	SA7-7 Squares		769-790K; 6000K	8=480V	SNQ-Type IV Narrow	WM-Wall Mount, Fixed	RALKE-Custom Color
	SA8-8 Squares		827-890K; 2700K	8=347V**	SMQ-Type V Square Medium	WA-Wall Mount, Adjustable	
	SA9-9 Squares		838-890K; 3000K	DM=277V-480V Dual-Volt Drivers**	SWQ-Type V Square Wide	UP-Upsewt Arm	
			AMB-Ambie, 5900m**		SL2-Type II w/Spill Control		
					SL3-Type II w/Spill Control		
					SL4-Type IV w/Spill Control		
					SL1-90° Spill Light Eliminator Left		
					SLR-90° Spill Light Eliminator Right		
					RL-Rectangular Wide Type I		
					AFI-Automotive Frontline		

Options (Add as Suffix)	Controls and Systems Options (Add as Suffix)	Accessories (Order Separately)**
DM-External 0-10V Dimming Leads** F-Single Fuse (120, 277 or 247V Specify Voltage) FF-Double Fuse (200, 240 or 480V Specify Voltage) 20K-20W UL 1449 fused surge protective device** ZL=Two Circuits** HA-50°C High Ambient HSS-Installed House Side Shield** GRS8-Clare Reducing Shield, Black** GRSWH-Clare Reducing Shield, White** LCF=Light Square Trim Painted to Match Housing** TR-Toolless Door Hardware* CC-Coastal Construction Break* L90-Optics Rotated 90° Left R90-Optics Rotated 90° Right AJD145-After Hours Dim, 5 Hours** AJD245-After Hours Dim, 6 Hours** AJD355-After Hours Dim, 7 Hours** AJD355-After Hours Dim, 8 Hours** SAL1-GALI Drivers	BPC-Button Type Photocontrol* PR7-NEMA 3-PIN Photocontrol Receptacle PR7-NEMA 7-PIN Photocontrol Receptacle** FADC-Field Adjustable Dimming Controller** SPB2-Dimming Motion Sensor, 9' 20" mounting** SPB4-Dimming Motion Sensor, 21' 40" mounting** SPB2B-Dimming Motion Sensor, limited square count, 9' 20" mounting** SPB4B-Dimming Motion Sensor, limited square count, 21' 40" mounting** ZW-WaveLinx-enabled 4 PIN Twistlock Receptacle** ZD-SI Drive-enabled 4 PIN Twistlock Receptacle** ZW-WOXX-WaveLinx Lite, Dimming Motion and Daylight, Bluetooth Programmable, 7' - 15' Mounting** ZD-WOXX-WaveLinx Lite, SR Drive, Dimming Motion and Daylight, Bluetooth Programmable, 15' - 40' Mounting** ZD-WOXX-WaveLinx Lite, SR Drive, Dimming Motion and Daylight, Bluetooth Programmable, 7' - 15' Mounting** ZD-WOXX-WaveLinx Lite, SR Drive, Dimming Motion and Daylight, Bluetooth Programmable, 15' - 40' Mounting** ZW-SWFO4XX-WaveLinx Pro, Dimming Motion and Daylight, WAC Programmable, 7' - 15' Mounting** ZW-SWFO4XX-WaveLinx Pro, Dimming Motion and Daylight, WAC Programmable, 15' - 40' Mounting** ZD-SWFO4XX-WaveLinx Pro, SR Drive, Dimming Motion and Daylight, WAC Programmable, 7' - 15' Mounting** ZD-SWFO4XX-WaveLinx Pro, SR Drive, Dimming Motion and Daylight, WAC Programmable, 15' - 40' Mounting** DEM19-L29-Synapse Occupancy Sensor (7' 20" Mounting)** DEM19-L49-Synapse Occupancy Sensor (21' 40" Mounting)**	DA-RA1016-NEMA Photocontrol Multi-Tap - 105-285V DA-RA1201-NEMA Photocontrol - 480V DA-RA1201-NEMA Photocontrol - 347V DA-RA1013-Photocontrol Shorting Cap DA-RA1014-120V Photocontrol MA1252-18V Surge Module Replacement MA1035-XX-Single Tenon Adapter for 2-3/8" O.D. Tenon MA1037-XX-3/8" Tenon Adapter for 2-3/8" O.D. Tenon MA1197-XX-3/8" Tenon Adapter for 2-3/8" O.D. Tenon MA1188-XX-4/8" Tenon Adapter for 2-3/8" O.D. Tenon MA1189-XX-2/8" Tenon Adapter for 2-3/8" O.D. Tenon MA1195-XX-3/8" Tenon Adapter for 2-3/8" O.D. Tenon MA1194-XX-3/8" Tenon Adapter for 3-1/2" O.D. Tenon MA1038-XX-Single Tenon Adapter for 3-1/2" O.D. Tenon MA1039-XX-2/8" Tenon Adapter for 3-1/2" O.D. Tenon MA1192-XX-3/8" Tenon Adapter for 3-1/2" O.D. Tenon MA1193-XX-4/8" Tenon Adapter for 3-1/2" O.D. Tenon MA1195-XX-3/8" Tenon Adapter for 3-1/2" O.D. Tenon SRA238-Adapter kit for mounting to 2-3/8" O.D. Tenon LS-HSS-Field Installed House Side Shield** LS-GRS8-SPK-Clare Reducing Shield, Black** LS-GRS8W-SPK-Clare Reducing Shield, White** LS-GRS5-Clare Reducing Shield, Black** WOLC-7P-15A-WaveLinx Outdoor Control Module** WOB-XX-WaveLinx Lite Sensor, Dimming Motion and Daylight, Bluetooth Programmable, 7' - 15' Mounting** WOF-XX-WaveLinx Lite Sensor, Dimming Motion and Daylight, Bluetooth Programmable, 15' - 40' Mounting** SWFO4-XX-WaveLinx Sensor, Dimming Motion and Daylight, WAC Programmable, 7' - 15' Mounting** SWFO5-XX-WaveLinx Sensor, Dimming Motion and Daylight, WAC Programmable, 15' - 40' Mounting**

NOTES:
1. Customer is responsible for engineering analysis to confirm pole and fixture compatibility for all applications. Refer to our white paper WPS13001EN for additional support information.
2. DesignLights Consortium® Qualified. Refer to www.designlights.org Qualified Products List under Family Models for details.
3. Coastal construction breaks suit types tested to over 1,000 hours per ASTM B117, with a score rating of 3 per ASTM B1554. Not available with TR option.
4. Drive current 1200mA not available with color temperatures 722, 727 or 830 when either TR or HSS options are selected.
5. TR option not available with Coastal Construction (CC) option.
6. Not available with voltage options N, B or S.
7. Requires the use of an internal step down transformer when combined with sensor options. Not available in combination with HA high ambient and sensor options at 1A.
8. Adjustable Softflex arm limited to vertical 3' tenon. For mounting to 2.518" O.D. tenons, order accessory SRA238.
9. One required for each Light Square.
10. 2L is not available with SPB at 247V or 480V. Not available with WaveLinx or Enlighted sensors, or 20A surge option.
11. Requires PR7.
12. Replace kit with sensor color (WV, BZ or BK).
13. WAC Drivers required to enable field configurability. Order WAC Pro and WFOC 120 (30W to Pro) separate power supply if needed. WAC not required for LC Bluetooth sensors.
14. Requires ZW or ZD receptacle.
15. Name brand 5900m or 5900m for visible and observatory use. Choose drive current A, supplied at 1000mA drive current with Exact luminaire wattage available in ES files. Available with WAC, IMQ, SL1, SL2 and SL2-ShiftButtons. Can be used with HSS option.
16. Set of 4 pins. One not required per Light Square.
17. Not available with HA option.
18. Not for use with WAC, IMQ, SWQ or SW optics.
19. Cannot be used with other control options.
20. Low voltage control must be brought out 18" outside fixture. Not available with DALI or integrated controls systems.
21. Not available if any SPB, LWB, or WaveLinx sensor is selected. Motion sensor has an integral photocell.
22. Requires the use of BPC photocell or the PR7 or PR Photocontrol receptacle with photocell accessories.
23. Not for use with T4FT, LWB or SL4 optics. See ES files for details.
24. Sensor configuration module application required for configuration. See controls page for details.
25. Replace kit with number of Light Squares controlled by the SPB, referencing the "SPB Availability Table" on the controls page.
26. Not available with HSS, QDWB or CRWB.
27. Only product configurations with these designated prefixes are built to be compliant with the Buy American Act of 1933 (BAA) or Trade Agreements Act of 1979 (TAA), respectively. Please refer to www.designlights.org website for more information. Components shipped separately may be separately analyzed under domestic preference requirements.
28. For BAA or TAA requirements, Accessories sold separately will be separately analyzed under domestic preference requirements. Consult factory for further information.
29. Overhaul drivers feature added protection from power quality issues such as loss of neutral, transients and voltage fluctuations. Visit www.merlinc.com/overhaul for more information.
30. 480V not to be used with ungrounded or impedance grounded systems.
31. Not available in 1 source configuration at 850mA or below. Not available with any control system except SPB.
32. Cannot be used with PR7 or other motion-responder control options.
33. Use GALN Product Configurator to specify luminaire output, drive current and wattage. Not available with AMB.

Product Family	Camera Type	Data Backhaul
L=LumenSafe Technology	0-Standard Dome Camera A-Hi-Res Dome Camera Z-Remote PTZ Camera	B-Cellular, Progra M-Wi-Fi Networking w/ Omni-Directional Antenna E-Ethernet Networking



PS500052EN page 2
April 19, 2023 2:12 PM

Submitted On: Aug 22, 2023

2/11

Index Page

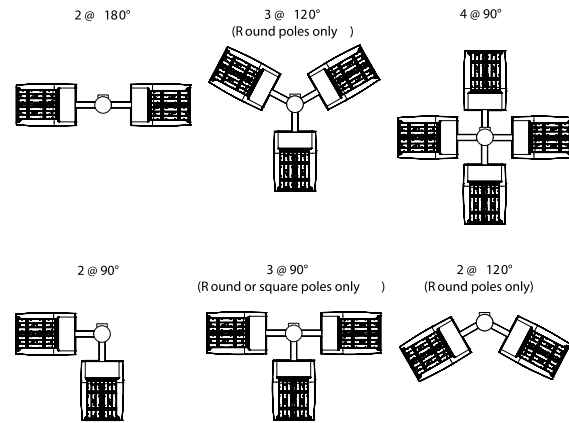
Submitted by LIGHTING ASSOCIATES	Catalog Number: GALN-SA4D-740-U-5WQ-BZ-DIM	Type: S1A
	Notes:	LAI23-295786

McGraw-Edison

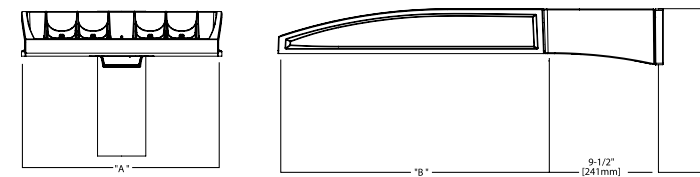
GALN Galleon II

Mounting Details

Pole Configuration Options

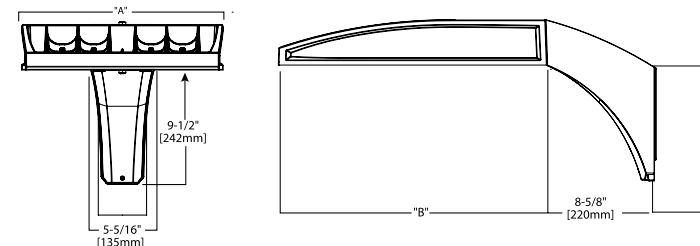


Quick Mount Arm (QM) *



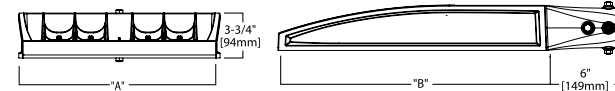
*NOTE: Use Type N drilling pattern

Upswept Arm (UP) *

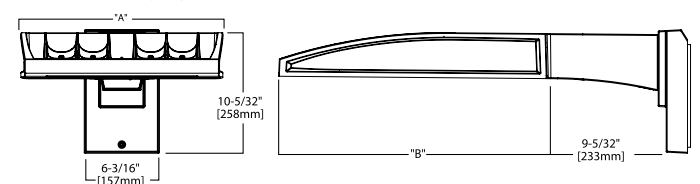


*NOTE: Use Type N, R or M drilling pattern

Mast Arm, Fixed (MA)

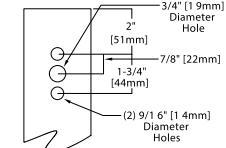


Wall Mount, Fixed (WM)

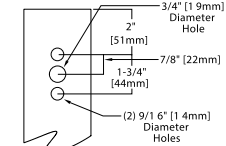


Pole Drilling Patterns

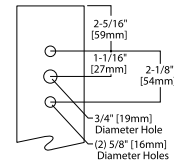
Type "N"



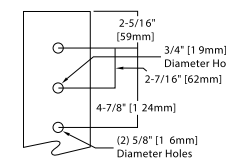
Type "N"



Type "R"



Type "M"



PS500052EN page 3
April 19, 2023 2:12 PM

PEDESTRIAN POLES

Project	Catalog #
Prepared by	Notes
	Date



Invue LXS Luxescape Collection

Decorative Luminaire

Product Features



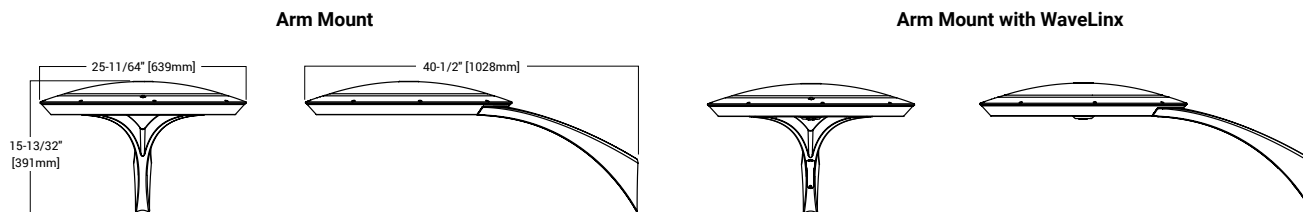
Interactive Menu

- Order Information page 3
- Product Specifications page 4
- Control Options page 12
- Optical Distributions page 6
- Mounting Accessories page 10

Quick Facts

- Contemporary, architectural form in 3 configurations
- WaveStream™ LED technology provides a visually comfortable light source
- Integrated controls options for standalone or connected solutions
- Lumen packages range from 1900 to 11,400 lumens
- Standard output is 4000K CCT with minimum 70 CRI; other options are available

Dimensional and Mounting Details

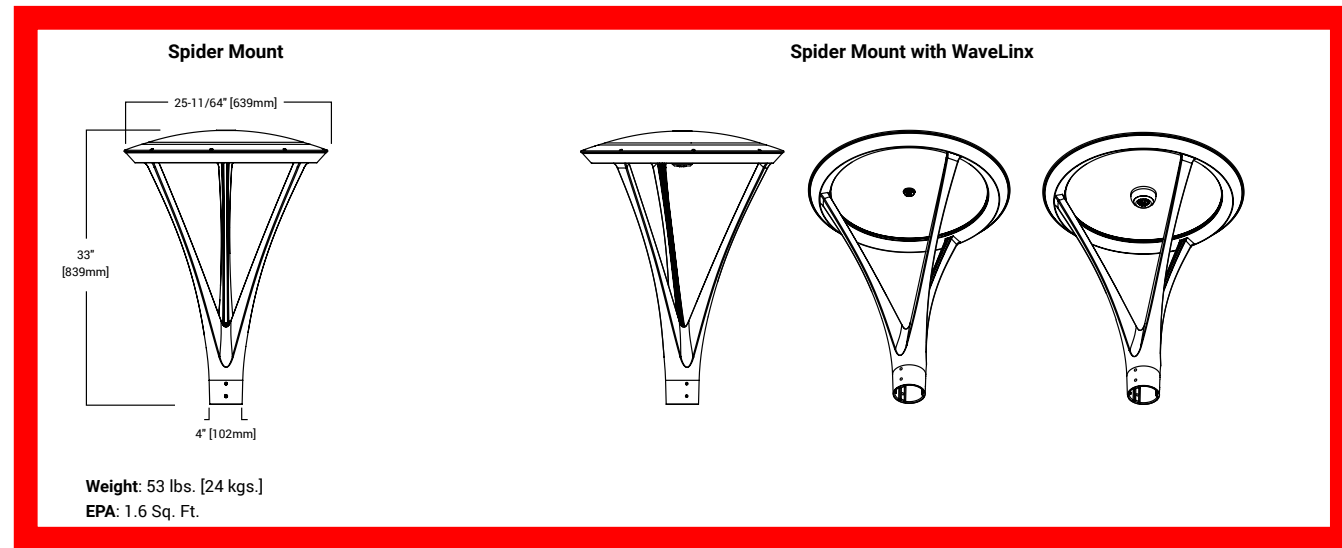


Weight: 41 lbs. [18.6 kgs.]
EPA: 1.0 Sq. Ft.

Invue

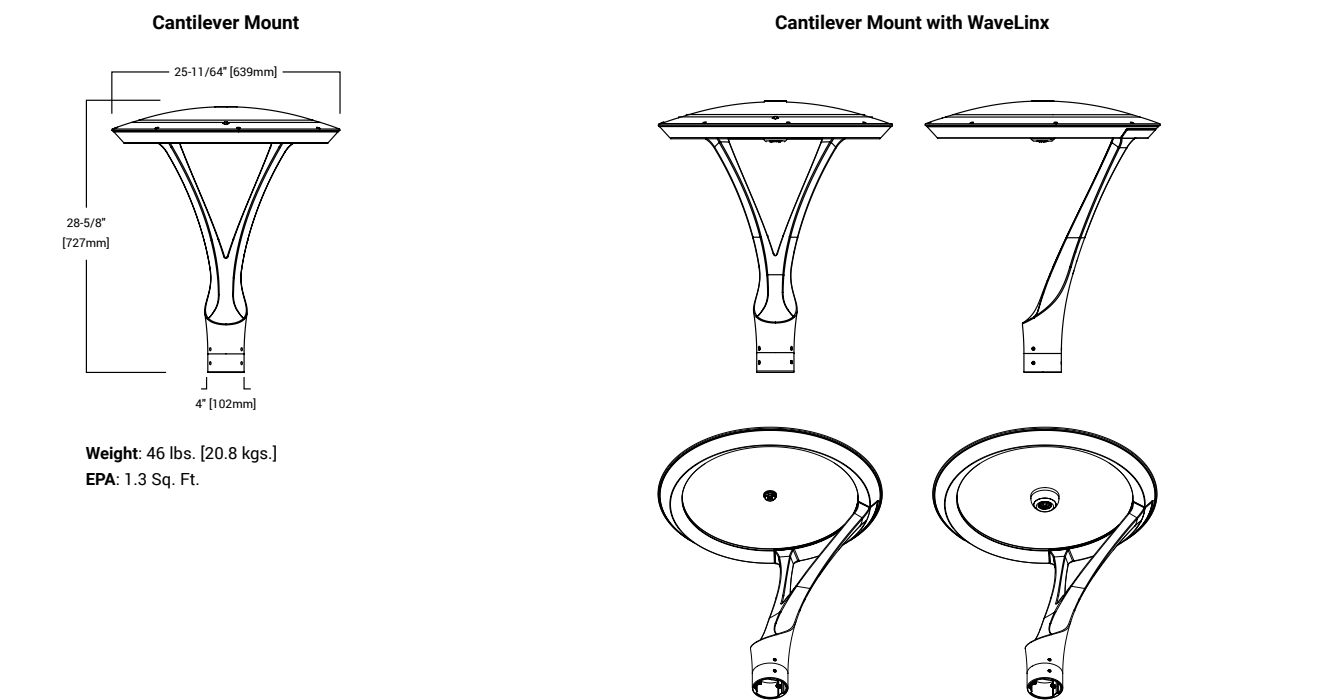
PEDESTRIAN POLES

Dimensional and Mounting Details



Weight: 53 lbs. [24 kgs.]
EPA: 1.6 Sq. Ft.

Product Certifications



Weight: 46 lbs. [20.8 kgs.]
EPA: 1.3 Sq. Ft.

Invue PEDESTRIAN POLES

Ordering Information

SAMPLE NUMBER: **LXS-VA3-LED-D1-T2-GM-S**

Product Family ^{1,2}	Optic Type	Lumen Package ³	CRI/CCT	Voltage	Distribution	Mounting	Finish
LXS = LuxeScape Collection BAA-LXS = LuxeScape Collection Buy American Act Compliant ³⁴	VA = Visual Comfort / WaveStream	1= Nominal 2,300 Lumens 2= Nominal 4,500 Lumens 3= Nominal 8,500 Lumens 4= Nominal 9,500 Lumens ⁴	730 = 70 CRI / 3000K 735 = 70 CRI / 3500K 740 = 70 CRI / 4000K 830 = 80 CRI / 3000K 835 = 80 CRI / 3500K 840 = 80 CRI / 4000K AMB = Amber 590nm ^{21,33}	U = 120- 277 1= 120 2= 208 4= 277 8= 480 ^{5,6} 9= 347 ⁵	ASC = Asymmetric Curbline ⁷ ASW = Asymmetric Wide ⁸ AST = Asymmetric Transverse ⁹ SYM = Symmetric Round ¹⁰	A = Arm Mount S = Spider Mount C = Cantilever Mount	AP = Grey BZ = Bronze BK = Black DP = Dark Platinum GM = Graphite Metallic WH = White RALXX = Custom Color ¹¹

Options (Add as Suffix)	Accessories (Order Separately) ^{18,35}
-------------------------	---

F = Single Fuse ¹² FF = Double Fuse ¹³ 10MSP = 10K MOV Surge Protective Device 20MSP = 20kV MOV Surge Protective Device 20K = 20kV UL 1449 Fused Surge Protective Device DIM = External 0-10V Dimming Leads ¹⁴ HA = 50°C High Ambient Temperature ¹⁵ VS = Vandal Shield ¹⁶ CC = Coastal Construction ¹⁷ DALI = DALI Driver ¹⁸ BPC = Button Type Photocontrol ¹⁹ PR = NEMA 3-PIN Twistlock Photocontrol Receptacle ²⁰ PR7 = NEMA 7-PIN Twistlock Photocontrol Receptacle ²⁰ PC = Twistlock NEMA Photocontrol LLPC = Long Life Twistlock NEMA Photocontrol ²² SC = Shorting Cap	MS-L08 = Motion Sensor for ON/OFF Operation, Up to 8' Mounting Height ^{21,22,23} MS-L20 = Motion Sensor for ON/OFF Operation, 9' - 20' Mounting Height ^{21,22,23} MS-L40W = Motion Sensor for ON/OFF Operation, 21' - 40' Mounting Height ^{21,22,23} MS/DIM-L08 = Motion Sensor for Dimming Operation, Up to 8' Mounting Height ^{21,22,23} MS/DIM-L20 = Motion Sensor for Dimming Operation, 9' - 20' Mounting Height ^{21,22,23} MS/DIM-L40W = Motion Sensor for Dimming Operation, 21' - 40' Mounting Height ^{21,22,23} DIM10 = Synapse Integrated Control Module WLS2WH = WaveLinX Lite, SR Driver, Dimming Motion and Daylight, Bluetooth Programmable, 7' - 15' Mounting WLS4WH = WaveLinX Lite, SR Driver, Dimming Motion and Daylight, Bluetooth Programmable, 15' - 40' Mounting WPS2WH = WaveLinX Pro, Dimming Motion and Daylight, WAC Programmable, 7' - 15' Mounting ^{24,27,26} WPS4WH = WaveLinX Pro, Dimming Motion and Daylight, WAC Programmable, 15' - 40' Mounting ^{24,27,26}	FSIR-100 = Wireless Configuration Tool for Occupancy Sensor ²⁸ ARPA2 = 2-3/8" O.D. Tenon Sleeve Adapter ²⁹ VA6028-XX = Twin Mount Arm (EPA 1.36 sq./ft.) ^{30,31} VA6029-XX = Wall Mount Arm ^{30,31} WOLC-7P-10A = WaveLinX Outdoor Control Module (7-PIN) ²⁹
---	---	--

NOTES:

- Customer is responsible for engineering analysis to confirm pole and fixture compatibility for all applications. Refer to our white paper WPS13001EN for additional support information.
- DesignLights Consortium® Qualified. Refer to www.designlights.org Qualified Products List under Family Models for details.
- Lumens are nominal. See lumen table for more information.
- 9,500 Lumen package available only on SYM distribution
- Requires the use of a step-down transformer.
- Only for use with 480V Wye systems. Per NEC, not for use with ungrounded systems, impedance grounded systems or corner grounded systems (commonly known as Three Phase Three Wire Delta, Three Phase High Leg Delta and Three Phase Corner Grounded Delta systems).
- IESNA Type III typical.
- IESNA Type IV typical.
- IESNA Type IV typical.
- IESNA Type V typical.
- IESNA Type V typical.
- Specify RAL number for Custom Color. Custom color matching available upon request. Consult your lighting representative at Cooper Lighting Solutions for more information.
- Must specify voltage (120V, 277V, or 347V) to fuse the single hot leg.
- Must specify voltage (208V, 240V, or 480V) to fuse the both hot legs.
- Low voltage control leads brought out 18" outside fixture. Not available with control options.
- Not available in VA3 with Type ASC, ASW and AST distributions.
- Reduce total lumens by a 0.95 multiplier to accommodate losses.
- Post-coating over the primary finish providing 7,000+ salt spray hours. Extended lead-times can be 4-10 additional weeks.
- Only available with VA3 and VA4 lumen packages.
- Not available with MS-LXX, MS/DIM-LXX, LWR-LW, LWR-LN or 347V or 480V options.
- Not available with MS-LXX, MS/DIM-LXX, LWR-LW, LWR-LN or 347V or 480V options.
- Not available with HA option.
- The FSIR-100 configuration tool is required to adjust parameters including high and low modes, sensitivity, time delay, cutoff and more. Consult your lighting representative at Cooper Lighting Solutions for more information.
- Approximately 22' detection diameter at 8' mounting height.
- Approximately 40' detection diameter at 20' mounting height.
- Approximately 100' detection diameter at 40' mounting height.
- Cannot be used in conjunction with photocontrol or other controls systems (BPC, PR, PR7, MS).
- NWAC Gateway required to enable field-configurability. Order WAC-POE and WPOE-120 (10V to POE injector) power supply if needed. Only compatible with WaveLinX system and software and requires system components to be installed for operation. See website for more WaveLinX application information.
- This tool enables adjustment of parameters including high and low modes, sensitivity, time delay, cutoff and more. Consult your lighting representative at Cooper Lighting Solutions for more information.
- Requires 7-PIN NEMA twistlock photocontrol receptacle. WOLC-7P-10A cannot be used in conjunction with additional sensors or controls.
- Not vibration rated at this time. Consult your lighting representative at Cooper Lighting Solutions for more information.
- Replace XX with color designation.
- Requires photocontrol receptacle PR or PR7.
- Narrow-band 590nm +/- 5nm for wildlife and observatory use. Choose Lumen Package 1. See IES files for photometric performance.
- Only product configurations with this designated prefix are built to be compliant with the Buy American Act of 1933 (BAA). Please refer to [DOMESTIC PREFERENCES](http://www.cooperlighting.com/legal) website for more information. Components shipped separately may be separately analyzed under domestic preference requirements.
- Accessories sold separately will be separately analyzed under domestic preference requirements. Consult factory for further information.
- Not available with SLTD option.
- Not available with 2300 or 9500 lumen package.

ARP ORDERING INFORMATION (ALUMINUM DECORATIVE POLE)

SAMPLE NUMBER: **ARP5L310ABZ2**

Product Family	Shaft Size (Inches) ¹	Wall Thickness (Inches)	Pole Top Diameter (Inches)	Mounting Height (Feet)	Base Type	Finish	Mounting Type	Number and Location of Arms	Options (Add as Suffix)
ARP = Aluminum Round Tapered Decorative BAA-ARP = Aluminum Round Tapered Decorative Buy American Act Compliant ³⁴	5= 5"	L= 0.156" M= 0.188"	3= 3" O.D. ² 6= 4" O.D. ³	10= 10' 12= 12' 14= 14' 16= 16' 18= 18' ⁴ 22= 22' ⁴	A = Aluminum (Round 4-Bolt Pole)	AP = Grey BA = Anodized Bronze BK = Black BZ = Bronze CA = Anodized Clear DA = Anodized Black DP = Dark Platinum GM = Graphite Metallic GN = Hartford Green WH = White	2= 2-3/8" O.D. Tenon (4" Long) 5= 3" O.D. Tenon (4" Long)	X = None	C = Convenience Outlet ⁵ E = GFCI Convenience Outlet ⁵ G = Ground Lug V = Vibration Dampener ⁴

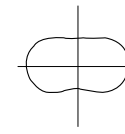
NOTES:

- All shaft sizes nominal.
- Provides 3" O.D. pole top suited for Arbor Post Top.
- Provides 4" O.D. pole top suited for LuxeScape post tops.
- Vibration damper recommended over 18 feet add suffix "V" to catalog number.
- Specify outlet location. Receptacle not included, provision only.

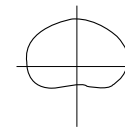
Invue PEDESTRIAN POLES

Optical Distributions

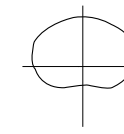
(Arm mount shown, distribution dependent on mounting)



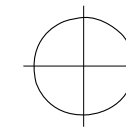
ASC
(Type III typical)



ASW
(Type IV typical)



AST
(Type IV typical)



SYM
(Type V typical)

Product Specifications

Construction

- Die-cast aluminum construction is highly durable and corrosion resistant
- ANSI C136.31 testing compliance prevents damage from installation generated vibration.
- External hardware and casting seams are minimized to enhance appearance.

Optics

- WaveStream™ LED optical system employs waveguide technology to reduce glare and create distributions ideal for pedestrian applications
- Symmetric and asymmetric distributions available
- Standard offering is 4000K CCT with 70CRI. Other CCT and CRI options are available including turtle-safe 590nm amber.

Electrical

- 0-10V dimming compatibility is standard.
- A 10kV surge protector, wired in series, is standard. Other options include 20kV modules and parallel or series configurations.
- Photocontrol receptacles and button photocell options are available

Controls

- Enable energy savings and meet code requirements by including WaveLinX connectivity in LuxeScape fixtures.
- The ANSI C136.41 compliant NEMA 7-PIN receptacle enables wireless dimming when used with compatible photocontrol.
- See control options page for more details.

Mounting

- Invue's aluminum round decorative pole (ARP) offering provides a seamless transition and compliments the contemporary design architecture with its unique sleek taper and base design.
- The tenon mount pole comes standard with an access door feature integrated into the base.
- ARM MOUNT:** The integrated aluminum contemporary upsweep arm bolts directly to a 4" or 5" round pole using an "N" drill pattern.
- SPIDER & CANTILEVER MOUNT:** Fitter assembly mounts over 3" O.D. tenon and can be adapted to a 2-3/8" tenon. It is secured via concealed, corrosion resistant set screw and jam screw pairs in six inconspicuous locations. Fitter design provides seamless transition to 4" O.D. round pole top
- Optional mounting accessories include a twin arm mount and wall mount arm.

Finish

- Premium TGIC based polyester powder coatings provides long service life.
- Finish is compliant to 3,000 hour salt spray standard (per ASTM B117).
- RAL and custom color matches available, additional charges and lead-time apply.

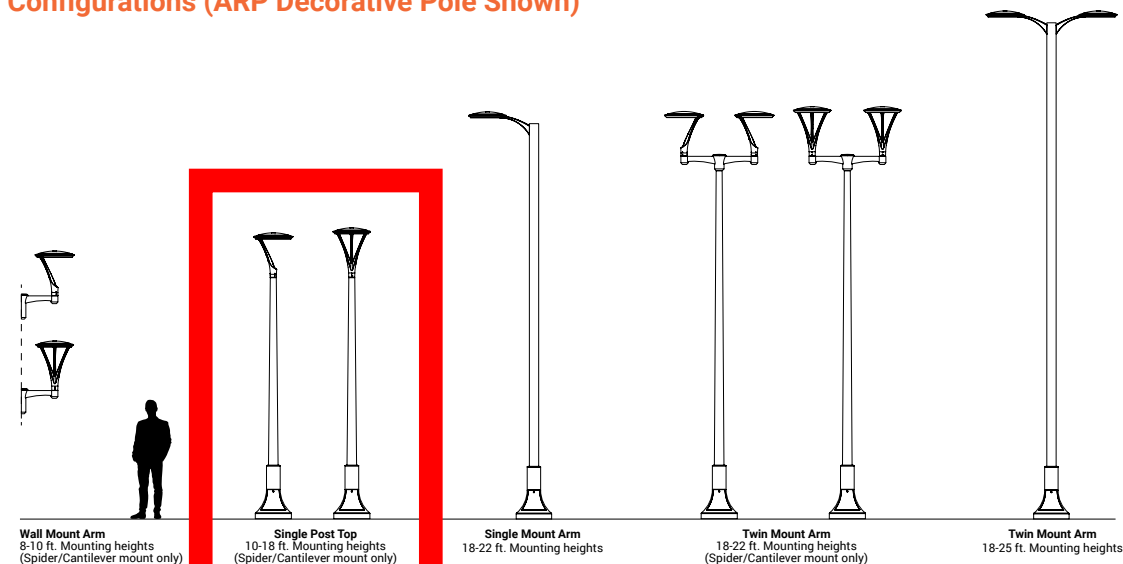
Compliance

- cULus certified for -40° to 40°C ambient environments, with high ambient options suitable up to 50°C.
- IP66 rated
- 3G vibration rated
- DarkSky approved for 3000K CCT and warmer
- Refer to [DOMESTIC PREFERENCES](http://www.cooperlighting.com/legal) website for information regarding Buy American Act requirements

Warranty

- Five year limited warranty, consult website for details. www.cooperlighting.com/legal

Pole Configurations (ARP Decorative Pole Shown)

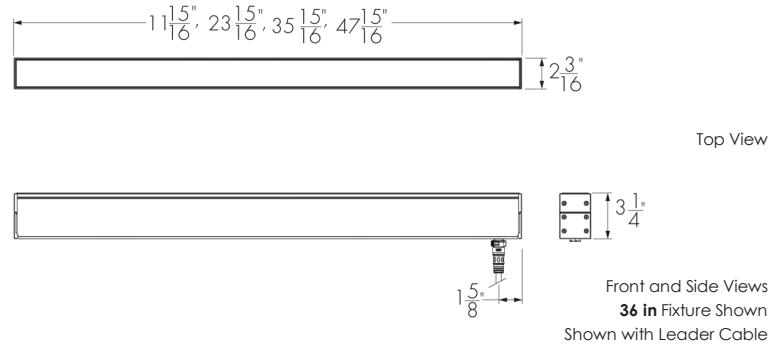


BUILDING UP LIGHTS

Lumenfacade
Pure
Standalone
LFP-SA
WHITE

Project Name _____ Qty _____

Type _____ Catalog / Part Number _____



Photometric Summary (17 W/ft)

Symmetric		
	Delivered Output (lm)	Intensity (Peak cd)
8°x8°	6,692	231,840
10°x10°	6,643	155,860
10°x30°	6,504	46,823
10°x60°	7,249	30,034
10°x90°	6,709	14,617
30°x30°	6,379	18,213
30°x60°	6,346	9,593
30°x90°	5,868	6,689
60°x60°	6,295	5,715
90°x90°	6,147	3,812
30°x10°	6,184	40,706
60°x10°	6,422	25,559
60°x30°	6,309	10,824
90°x10°	6,116	14,815
W (120°)	4,950	1,702
Asymmetric		
NAS	6,183	82,064
WW	5,906	10,126
CAS	4,935	9,542

Based on 4000K, 4ft [1218mm]
Photometric performance is measured in compliance with IESNA LM-79-08.
8x8, 10x10, 10x30, 10x60, 10x90, 30x30, 30x60, 30x90, 60x60, 90x90, 30x10, 60x10, 60x30, 90x10, W and CAS optics tested with CL lens.
NAS and WW optics tested with HFR lens.

Description

The Lumenfacade Pure Standalone is the purest expression of Lumenpulse form, design, quality, and performance. Designed from the inside out to be a cutting-edge expression of Lumenpulse quality, the Lumenfacade Pure possesses simplified control options, integrated accessories, and cohesive mounting options. Rethink everything you've thought about white light; think Lumenpulse.

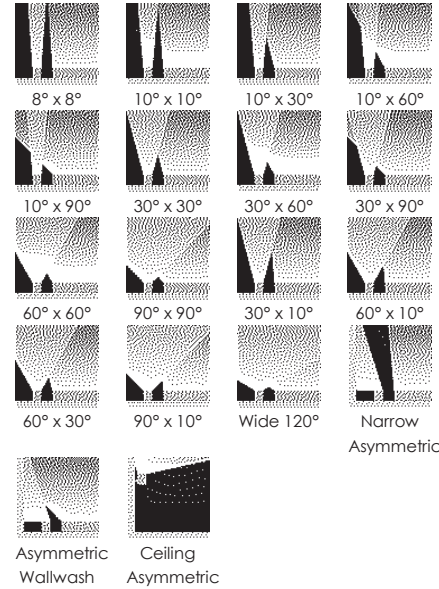
Features

Length (Nominal)	12: 12 in, 24: 24 in, 36: 36 in, 48: 48 in
Color and Color Temperature	22K: 2200K, 27K: 2700K, 30K: 3000K, 35K: 3500K, 40K: 4000K
Vibration Rating	NVR: Buildings and Fixed Structures, VRN: Pole-Mounts, VRBO: Bridges and Overpasses
Fixed Mounting Options	FX: Fixed Mounting (0° Pivot Limit) STEM12: Stem Mounting 12 in STEM24: Stem Mounting 24 in STEM36: Stem Mounting 36 in STEM48: Stem Mounting 48 in ACC50: Aircraft Cable 50 in ACC100: Aircraft Cable 100 in

BUILDING UP LIGHTS

Lumenfacade
Pure
Standalone
LFP-SA
WHITE

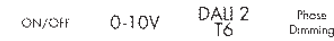
Optic



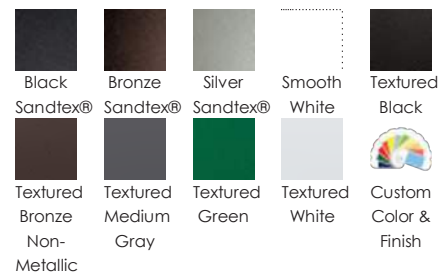
Color and Color Temperature



Control



Finish



Continuously Adjustable Mounting Options

SM: Slim Adjustable Mounting Continuously Adjustable (110° Pivot Limit)

WMC3: Wall Mounting Continuously Adjustable, 3.5 in to Optical Center (140° Pivot Limit)

WMC12: Wall Mounting Continuously Adjustable, 12 in to Optical Center (180° Pivot Limit)

WMC24: Wall Mounting Continuously Adjustable, 24 in to Optical Center (180° Pivot Limit)

WMC1: Wall Mounting Continuously Adjustable, 1.5 in to Optical Center (180° Pivot Limit)

WMC6: Wall Mounting Continuously Adjustable, 6 in to Optical Center (180° Pivot Limit)

WMC18: Wall Mounting Continuously Adjustable, 18 in to Optical Center (180° Pivot Limit)

Incrementally Adjustable Mounting Options

WMI1: Wall Mounting Incrementally Adjustable by 6", 1.5 in to Optical Center (180° Pivot Limit)

WMI6: Wall Mounting Incrementally Adjustable by 6", 6 in to Optical Center (180° Pivot Limit)

WMI18: Wall Mounting Incrementally Adjustable by 6", 18 in to Optical Center (180° Pivot Limit)

WMI3: Wall Mounting Incrementally Adjustable by 6", 3.5 in to Optical Center (140° Pivot Limit)

WMI12: Wall Mounting Incrementally Adjustable by 6", 12 in to Optical Center (180° Pivot Limit)

WMI24: Wall Mounting Incrementally Adjustable by 6", 24 in to Optical Center (180° Pivot Limit)

Canopy Finish

BK: Black Sandtex®, **SI:** Silver Sandtex®, **WH:** White, **CC:** Custom Color and Finish (Please Specify RAL Color)

Optical Accessories

LV: Radial Louver
LVAS: Radial Louver Asymmetric
VS: Visor
SH: Shield

Warranty

5-year limited warranty

Performance

Maximum Delivered Output	1,820 lm (3.75 W/ft, 48 in fixture, 4000K, CRI 80+, 10° x 60°, CL Lens) 4,958 lm (10 W/ft, 48 in fixture, 4000K, CRI 80+, 10° x 60°, CL Lens) 7,249 lm (17 W/ft, 48 in fixture, 4000K, CRI 80+, 10° x 60°, CL Lens)
---------------------------------	---

Maximum Delivered Intensity	58,192 cd at nadir (3.75 W/ft, 48 in fixture, 4000K, CRI 80+, 8° x 8°, CL lens) 158,579 cd at nadir (10 W/ft, 48 in fixture, 4000K, CRI 80+, 8° x 8°, CL Lens) 231,840 cd at nadir (17 W/ft, 48 in fixture, 4000K, CRI 80+, 8° x 8°, CL Lens)
------------------------------------	---

BUILDING UP LIGHTS

Lumenfacade
Pure
Standalone
LFP-SA
WHITE

Certifications



Illuminance at Distance	Minimum 1 fc at 247 ft (3.75 W/ft, 48 in fixture, 4000K, CRI 80+, 8° x 8°, CL Lens) Minimum 1 fc at 408 ft (10 W/ft, 48 in fixture, 4000K, CRI 80+, 8° x 8°, CL Lens) Minimum 1 fc at 493 ft (17 W/ft, 48 in fixture, 4000K, CRI 80+, 8° x 8°, CL Lens)
Color Consistency	2 SDCM
Lumen Maintenance	L70 (10K) > 60,000 hrs Ta 25 °C (TM-21 reported) L70 > 150,000 hrs Ta 25 °C (projected)* L90 (10K) = 55,600 hrs Ta 25 °C (TM-21 reported) L90 = 55,600 hrs Ta 25 °C (projected)* *Estimated based on in-situ case temperature and LM-80 report
Color Rendering	CRI 80+ Consult factory for CRI 90+
Physical	
Housing Material	Low copper content extruded aluminum
Lens Material	Tempered glass
Hardware Material	Stainless steel
End Cap Material	Die cast aluminum
Gasket Material	Silicone
Surface Finish	XD: Luminaire treated with extra-durable, multi-step finish: zirconium pretreatment completed with corrosion-resistant primer and electrostatically-applied, powder coat paint finish
Weight	4 lbs (12 in fixture) 7.5 lbs (24 in fixture) 10.25 lbs (36 in fixture) 13.25 lbs (48 in fixture)
Electrical and Control	
Voltage	120 to 277 volts
Wattage	3.75W: 3.75 W/ft, 10W: 10 W/ft, 17W: 17 W/ft
Control	NO: On/Off Control, DIM: 0-10V Dimming, DALI: DALI 2 T6 Control, PH: Phase dimming
Inrush Current (Peak)	Meets NEMA-410 requirements (Based on voltage and control specifications, consult factory for details)
Environmental	
Storage Temperature	-40 °F to 185 °F
Start-up Temperature	-40 °F and up (NO, DIM and DALI controls) 14 °F and up (PH control)
Operating Temperature	For 3.75 W/ft and 10 W/ft fixtures: -40 °F to 122 °F (NO, DIM and DALI controls) 14 °F to 122 °F (PH control) For 17 W/ft fixtures: -40 °F to 104 °F (NO, DIM and DALI controls) 14 °F to 104 °F (PH control)

BUILDING UP LIGHTS

Lumenfacade
Pure
Standalone
LFP-SA
WHITE

Ingress Protection Rating	IP66 IP67 (suitable for applications with temporary immersion in water only (no permanent immersion), proper drainage around the fixture is required). Consult factory for details
Impact Resistance Rating	IK07 (CL lens), IK07 (HFR lens), IK06 (FR lens) Consult factory for IK08 lens option
Application Wind Speed	Luminaires were designed based on AASHTO 2013 standard to ensure highest quality and safety. Installation should be validated by a local project engineer to ensure the luminaires are suitable for the wind speed and exposure of the specific application
Environment	Wet location rating
Accessories (Order Separately)	
Cables	LFLC: Lumenfacade Leader Cable LFJC: Lumenfacade Jumper Cable LFTJ: Lumenfacade T-Junction

LANDSCAPE UP LIGHTS

MODEL **1043Y** | Specification Sheet
Commercial Series • Floodlight • LED

DELIVERED LUMENS

BEAM SPREAD	A	B	C	D	E	F
Very Narrow Spot 16° (VNS)	5 Watts 135 Lumens	17 Watts 361 Lumens				
Narrow Spot 19° (NS)		5 Watts 364 Lumens	7.5 Watts 566 Lumens	10 Watts 738 Lumens	16 Watts 1035 Lumens	19 Watts 1212 Lumens
Medium Flood 30° (MF)		5 Watts 321 Lumens	7.5 Watts 487 Lumens	10 Watts 711 Lumens	16 Watts 1035 Lumens	19 Watts 1188 Lumens
Wide Flood 45° (WF)		5 Watts 332 Lumens	7.5 Watts 542 Lumens	10 Watts 687 Lumens	16 Watts 957 Lumens	19 Watts 1052 Lumens