



**AGENDA**  
**ARCHITECTURAL REVIEW BOARD MEETING**  
Conference Room 102-103  
Thursday, May 14, 2026  
5:30 PM

**I. CALL TO ORDER**

**II. APPROVAL OF MEETING SUMMARY**

A. April 16, 2026

**III. UNFINISHED BUSINESS**

A. **Chesterfield Commons Seven, Lot 3**: A Site Development Section Plan, Landscape Plan, Lighting Plan and Architectural Elevations for an automobile dealership building located on a 4.69-acre tract of land located north of Arnage Road, and south of I-64 zoned "PC"- Planned Commercial.

**IV. NEW BUSINESS**

**V. OTHER**

**VI. ADJOURNMENT**

\*PC Liaison Gail Choate is scheduled for this meeting

PERSONS REQUIRING AN ACCOMMODATION TO ATTEND AND PARTICIPATE IN THE ARCHITECTURAL REVIEW BOARD MEETING SHOULD CONTACT CITY CLERK VICKIE MCGOWND AT (636)537-6716 AT LEAST TWO (2) BUSINESS DAYS PRIOR TO THE MEETING.

# II. A.



THE CITY OF CHESTERFIELD  
ARCHITECTURAL REVIEW BOARD  
THURSDAY – APRIL 16, 2026  
5:30 PM  
CONFERENCE ROOM 102/103

ATTENDANCE:

Mr. Mick Weber, Chair  
Mr. Scott Starling, Vice-Chair  
Mr. Matt Adams  
Mr. Kristopher Mehrtens

ABSENT:

Mr. John Lavrich  
Ms. Susan Lew

ALSO IN ATTENDANCE:

Planning Commission Liaison, Rob Rodermund  
Ms. Shilpi Bharti, Planner  
Ms. Kristine Kelley, Recording Secretary

I. **CALL TO ORDER**

Chair Weber called the meeting to order at 5:30 p.m.

II. **APPROVAL OF MEETING SUMMARY**

A. February 12, 2026

Vice-Chair Starling made a motion to approve the meeting summary as written. Board Member Adams seconded the motion. The motion passed by a voice vote of 4-0.

III. **UNFINISHED BUSINESS – None**

IV. **NEW BUSINESS**

- A. Chesterfield Commons Seven, Lot 3: A Site Development Section Plan, Landscape Plan, Lighting Plan and Architectural Elevations for an automobile dealership building located on a 4.69-acre tract of land located north of Arnage Road, and south of I-64 zoned "PC"-Planned Commercial.

STAFF PRESENTATION

Ms. Shilpi Bharti, Planner explained that the applicant is proposing a single-story 43,035 square foot "Rivian" automobile dealership and service facility. Ms. Bharti then provided a brief history of the site and surrounding zoning.

### Circulation System and Access

The building's main entrance faces I-64 to the north. The loaner and fleet vehicle parking are proposed south of the site. All parking requirements have been met; however, particular attention has been made for the 28 display spaces facing I-64 to be screened by trees and shrubs within a 30-foot landscape buffer.

### Trash Enclosure

The enclosure is located on the south side of the property and will be constructed of composite masonry units and screened with evergreen trees.

### Mechanical Equipment

The proposed rooftop equipment will be screened with vertical aluminum panels, painted to match the building.

### Materials and Color

The proposed building will feature a smooth, unpainted, light concrete finish with unique reveals and textural changes across all four sides of the building.

To break up the length of the façade, the applicant proposes aluminum storefront elements on the east and west elevations, with Black Forest composite fiberboard panels in between. A total of four (4) overhead doors are proposed.

### Lighting

A total of 29 light fixtures are proposed including parking lights and wall pack lights.

### Landscaping

The proposed landscape plan includes; a mix of shade trees, ornamental trees, evergreen trees, shrubs, and ground cover. One (1) bio-retention basin is proposed on the south side of the site.

## DISCUSSION

During discussion the following information was provided.

- The Board advised that particular attention should be to visibility and quality along the I-64 corridor. The applicant needs to reevaluate the area, as the "industrial" feel of the building design and material selection does not fit the area.
- The design lacks materials to break up the long façade, as well as integration of masonry materials and glass elements.
- Consider carrying the Black aluminum curtain material around all four corners of the building.
- Concerns and maintenance issues with unpainted tilt-up concrete panels.
- Consider accent lighting elements instead of the wall packs.
- Provide a Landscape Plan. The neighboring landscaping was further identified. The landscape planters against the building provide a nice visual. Provide landscaping to soften the look of the building.

- Maintenance of landscaping along the highway frontage.
- The ground-mount utility transformer will be fully screened with shrubbery.
- Color of exterior scuppers and downspouts should match the building.
- Trash enclosure color & materials similar to the building.
- Concerns to visibility of the rooftop mechanical equipment. Applicant is not opposed to raising the parapet to screen the RTU's.
- The applicant provided further explanation to the design, corporate color selection, and purpose of the building. No dilapidated or damaged cars stored on site.
- Recommendation to provide a night time rendering.
- Provide any color and materials samples that were not presented.

After considerable discussion, and options of moving forward, the applicant requested to **HOLD** the project allowing time to address the numerous concerns from the Board. No action necessary at this time.

V. **OTHER**

VI. **ADJOURNMENT** 6:36 p.m.

## Architectural Review Board Staff Report

**Meeting Date:** May 14, 2026

**From:** Shilpi Bharti, Planner *SB*

**Location:** 23 Arnage Road

**Description:** **Chesterfield Commons Seven, Lot 3:** A Site Development Section Plan, Landscape Plan, Lighting Plan and Architectural Elevations for an automobile dealership building located on a 4.69-acre tract of land located north of Arnage Road and south of I-64, zoned “PC”-Planned Commercial.

### **PROPOSAL SUMMARY**

DSS Building Group, on behalf of Rivian, has submitted a Site Development Section Plan, Landscape Plan, Lighting Plan, and Architectural Elevations for an automobile sales and service building to be known as Rivian, located at 23 Arnage Road, in the Chesterfield Commons Seven subdivision.

Proposed Development includes:

- 43,035 square feet of building
- 130 parking spaces
- 55 display spaces
- Landscape Plan
- Lighting Plan



*Figure 1: Subject Location*

The project was presented to the Architectural Review Board on April 16, 2026. A significant number of comments were made regarding the building’s design, materials, and its appearance from I-64, and the applicant made a request to hold. Since then, the applicant has revised the submittal.

### **CHANGES SINCE APRIL ARB:**

The applicant has updated the building design and proposed exterior materials from the previous submittal. Previously, the design featured a smooth, unpainted light-concrete finish with 2-foot reveals, along with EIFS intended to match the light concrete appearance, incorporating 6-inch reveals that wrapped all four (4) sides of the building. In the revised elevations, the applicant is proposing painting the exposed concrete a Repose Gray and the EIFS a Traffic White.

As discussed during the April ARB meeting, the north elevation facing I-64 has also been revised to extend the custom-painted Black Forest composite fiberboard from east to west and to incorporate additional glazing. The height of the composite fiberboard has been increased to better screen rooftop mechanical equipment from view along I-64.

To reduce the linear appearance of the building, the long façade has been articulated with aluminum storefront elements and sections of composite fiberboard at regular intervals, breaking up expanses of concrete and EIFS. New planters have also been added along the west elevation. Additionally, the building plane has been modified to introduce variation in depth, creating a more dynamic, three-dimensional massing along the north elevation facing I-64. This approach was discussed and suggested by Board members during the April meeting, and the applicant has incorporated it into the revised elevations. The façade steps vary by approximately 2, 4, and 6 feet from the base plane. Additionally, the applicant has revised the proposed trash enclosure material from CMU to painted concrete panels to match the proposed building color.



Figure 2: Previous north elevation



Figure 3: Revised north elevation

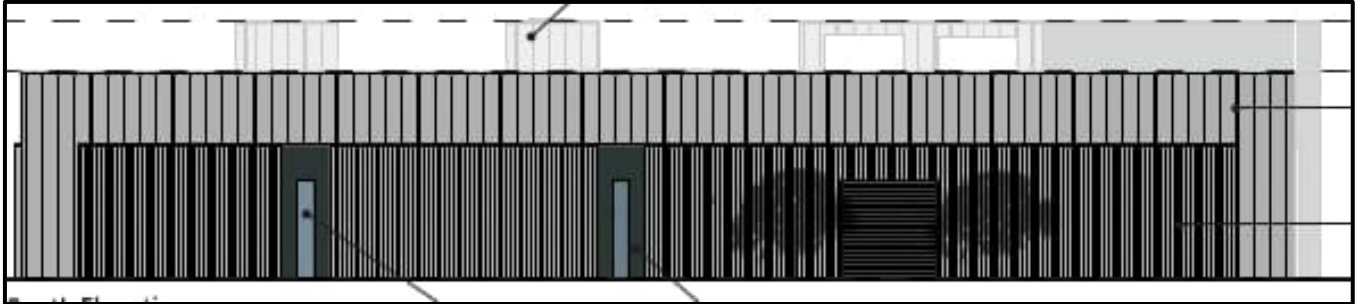


Figure 4: Previous south elevation

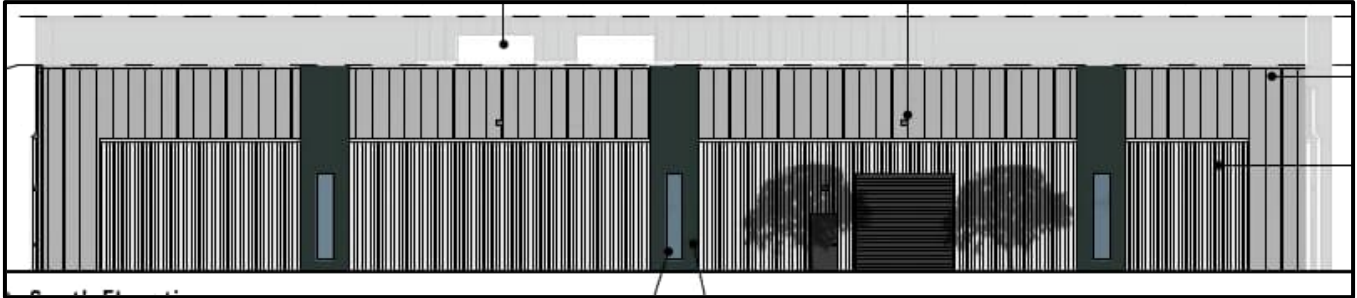


Figure 5: Revised south elevation

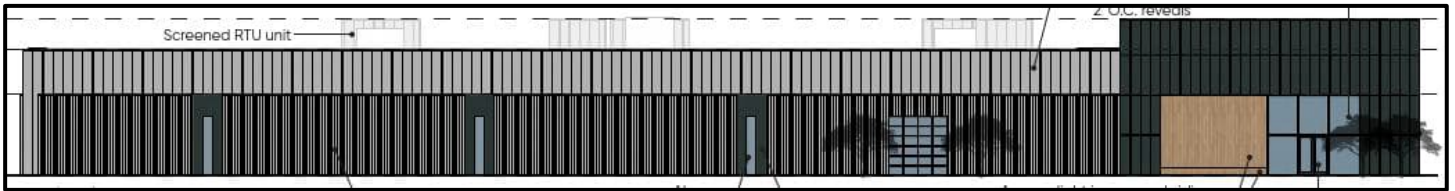


Figure 6: Previous east elevation

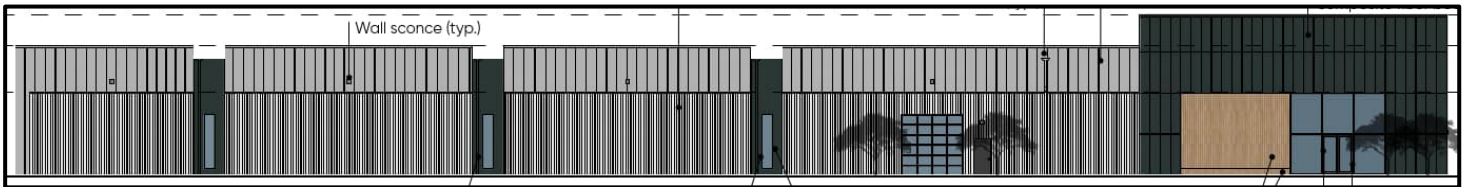


Figure 7: Revised east elevation



Figure 8: Previous west elevation

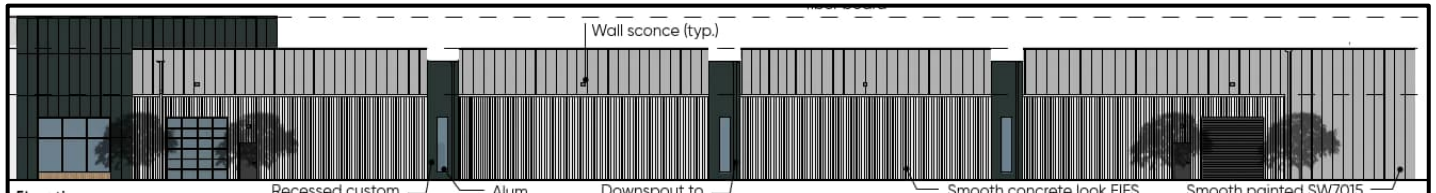


Figure 9: Revised west elevation

**Rendering**



*Figure 10: Revised rendering (view from I-64)*



*Figure 11: Revised rendering (view from I-64)*



*Figure 12: Night rendering*

**NEIGHBORING STRUCTURE:**

During the April ARB meeting, the Board discussed the neighboring car dealership buildings and the materials used in their construction. The proposed site is bordered by the Jaguar dealership to the west and Holman Motorcars St. Louis to the east. Staff reviewed both developments, and the findings are summarized below:



Figure 12: Neighboring Structures

**Jaguar/Land Rover (west of the subject site):**

The Jaguar dealership is located within the TSG Chesterfield Airport Road subdivision. The building façade consists of precast concrete panels with a painted finish and a cast ribbed profile on the south elevation. The north elevation, which faces I-64, incorporates precast concrete panels and an aluminum composite panel system. Similar materials precast concrete and aluminum composite panels are used on the west elevation.

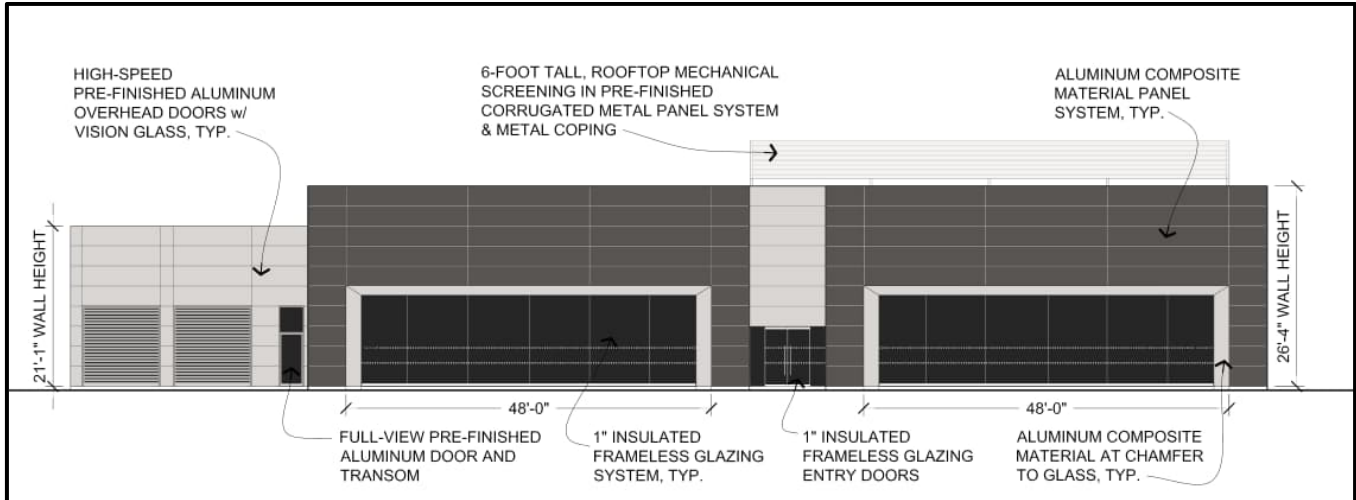


Figure 23: North Elevation facing I-64

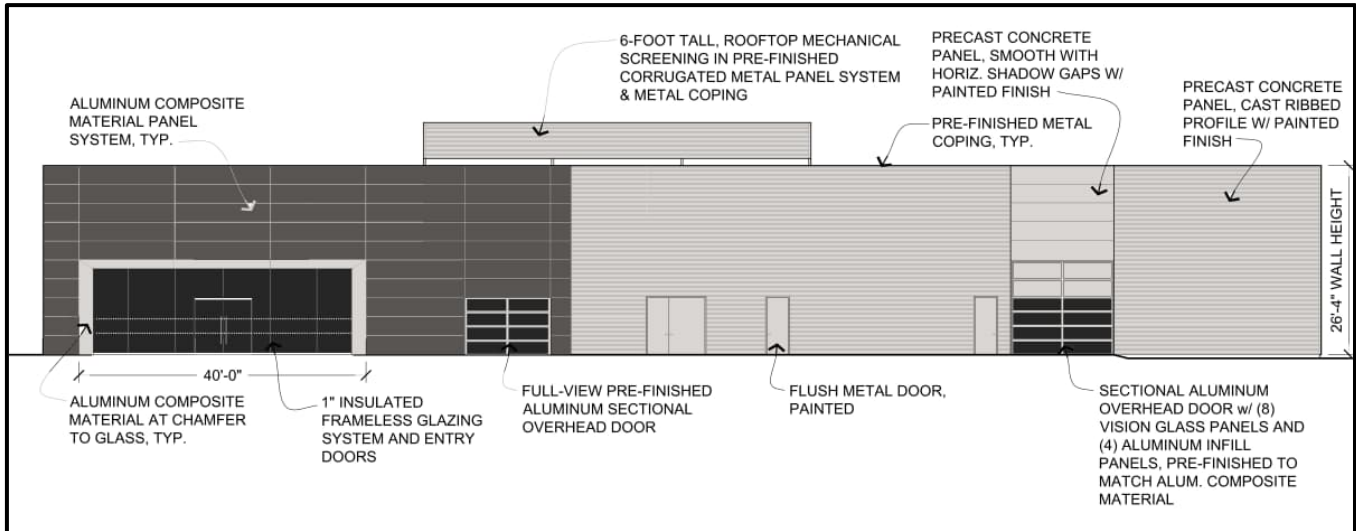


Figure 14: West Elevation

**Holman Motorcars St. Louis (east of the subject site):**

This dealership is located within the River Crossing subdivision. The building utilizes brick veneer, cast stone, and aluminum composite panels on all four (4) elevations.

**DEPARTMENTAL INPUT**

Be advised, this project is under review by City Staff and will not proceed to the Planning Commission until all outstanding items have been addressed. All recommendations made by the ARB will be included in Staff’s report to the Planning Commission.

## **MOTION**

The following options are provided to the Architectural Review Board for consideration relative to this application:

- 1) "I move to forward the Site Development Section Plan, Landscape Plan, Lighting Plan, and Architectural Elevations for Chesterfield Commons Seven, Lot 3, as presented, with a recommendation for approval (or denial)."
- 2) "I move to forward the Site Development Section Plan, Landscape Plan, Lighting Plan, and Architectural Elevations for Chesterfield Commons Seven, Lot 3, with a recommendation for approval with the following conditions..."

### Attachments

1. April 16 ARB Report
2. Architectural Review Packet Submittal

## Architectural Review Board Staff Report

**Meeting Date:** April 16, 2026

**From:** Shilpi Bharti, Planner *SB*

**Location:** 23 Arnage Road

**Description:** **Chesterfield Commons Seven, Lot 3:** A Site Development Section Plan, Landscape Plan, Lighting Plan and Architectural Elevations for an automobile dealership building located on a 4.69-acre tract of land located north of Arnage Road and south of I-64, zoned “PC”-Planned Commercial.

### PROPOSAL SUMMARY

DSS Building Group, on behalf of Rivian, has submitted a Site Development Section Plan, Landscape Plan, Lighting Plan, and Architectural Elevations for an automobile sales and service building to be known as Rivian, located at 23 Arnage Road, in the Chesterfield Commons Seven subdivision.

Proposed Development includes:

- 43,035 square feet of building
- 130 parking spaces
- 55 display spaces
- Landscape Plan
- Lighting Plan



Figure 1: Subject Location

### HISTORY OF SUBJECT SITE

The site is situated within the Chesterfield Commons Seven subdivision in the City of Chesterfield. Originally, the subdivision was zoned “NU” – Non-Urban District prior to the City’s incorporation. In 2008, the site was rezoned to “PC” – Planned Commercial, resulting in the creation of Ordinance 2501. The record plat of the subdivision was approved in 2011, establishing three (3) lots.

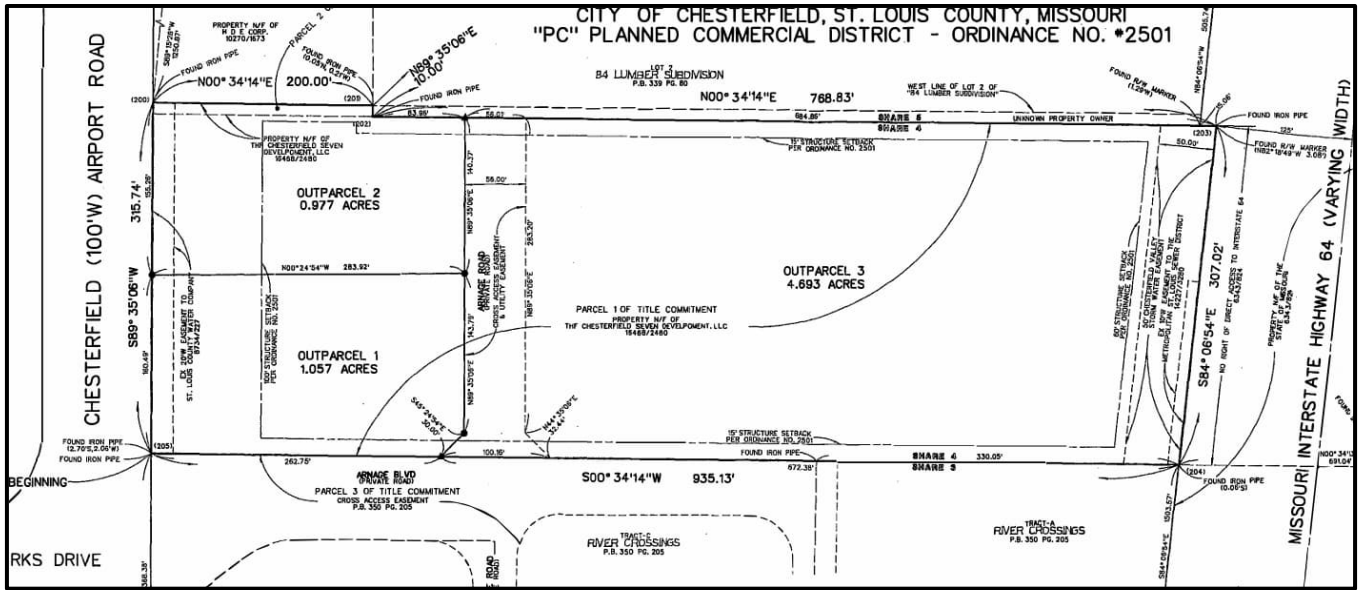


Figure 2: Record Plat

**STAFF ANALYSIS**

The Site Development Section Plan for Lot 3 proposes a 43,035 square-foot automobile dealership and service facility. The site will be accessed from Arnage Road to the south, with a secondary access point from Arnage Boulevard to the east.

The building is located on the north side of the site, with its front façade oriented toward I-64. Display spaces are situated along the north and east sides of the site. Service vehicle parking is located near the building on the south side. Additionally, loaner and fleet vehicle parking are proposed on the south side of the site.

The City of Chesterfield Unified Development Code (UDC) establishes general site and building design requirements, which are discussed in further detail in this report.



Figure 3: Site Plan

### Site Relationships

The proposed building is located on a 4.63-acre parcel. The single-story building has a height of 25 feet, (four) 4 inches, with rooftop screening measuring six (6) feet in height that brings the total building height to 31 feet (four) inches. The site is bordered by Arnage Road to the south, I-64 to the north, single story car dealership to the west, and Arnage Boulevard to the east.

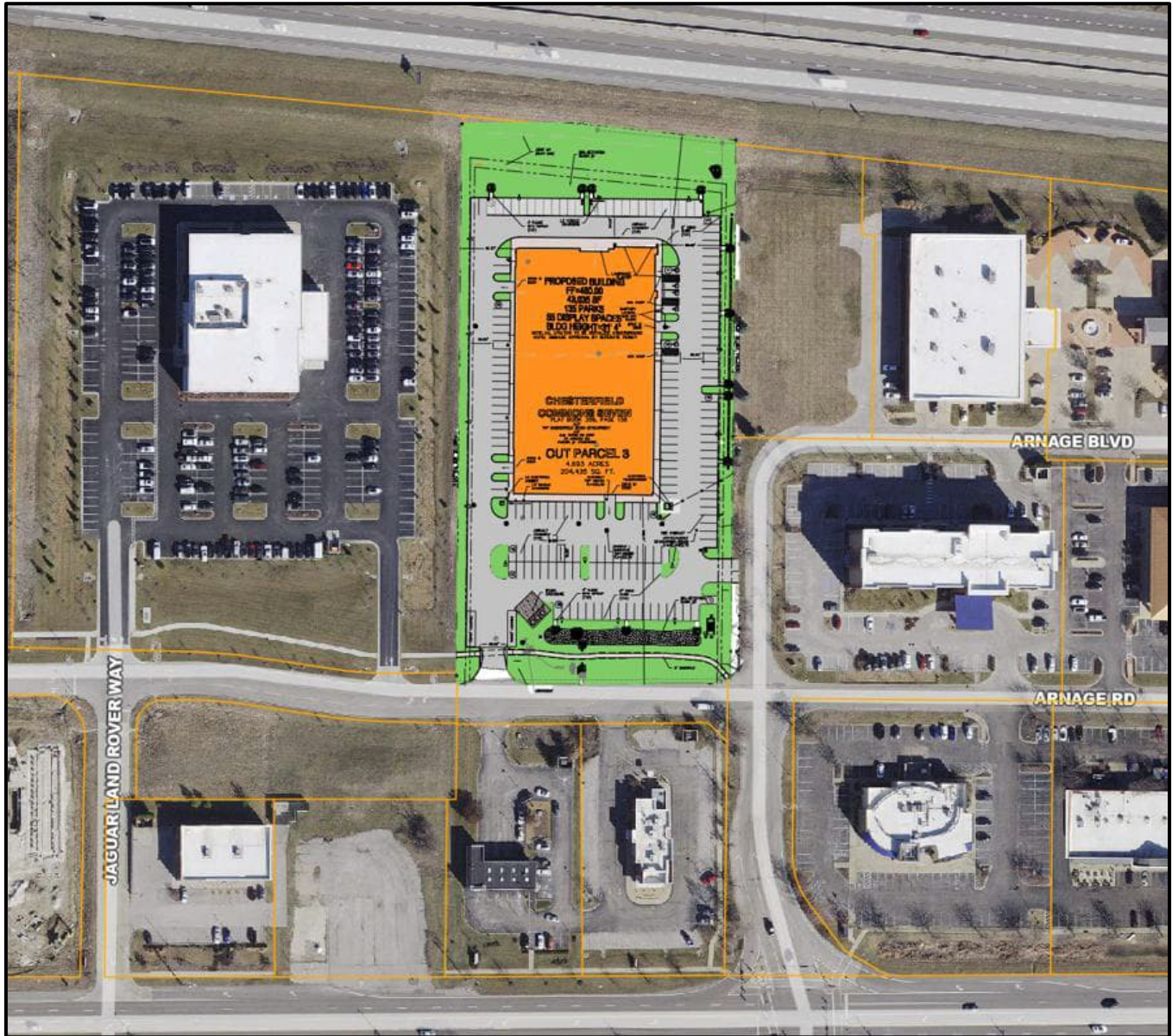


Figure 4: Neighboring development

### Circulation System and Access

Access to the site is provided from Arnage Road to the south, while the building’s main entrance faces I-64 to the north. The proposed access location is consistent with the Site Development Concept Plan for the subdivision.

A secondary access point is located on the east, connecting to Arnage Boulevard. The development includes 55 display spaces, along with service vehicle parking, customer parking, and parking for loaner and fleet vehicles.

Of the total display spaces, 28 are proposed along I-64 on the proposed pavers, and will be partially screened by trees and shrubs within a 30-foot landscape buffer. Service and loaner/fleet vehicle parking will be located on the south side of the site near the building.

### Scale, Topography, Retaining Wall and Screening

The site is currently vacant and is bordered by a building to the west. It is relatively flat, and no retaining walls are proposed for the development. The trash enclosure is located on the south side of the property and will be constructed of composite masonry units. The enclosure will be screened with evergreen trees. Rooftop mechanical equipment will be installed and screened with aluminum panels arranged in a vertical slat configuration, painted to match the building.

### Materials and Color

The proposed building will feature a smooth, unpainted, light concrete finish with (two) 2-foot reveals at the top (parapet level), along with a smooth concrete-look painted EIFS with (six) 6-inch reveals, along the main walls on all four (4) sides. The front elevation, which faces I-64, includes Black Forest composite fiberboard and a black aluminum curtain wall system. The east elevation incorporates portions of the black composite fiberboard, complemented by Accoya light ivory wood siding.

To break up the length of the façade, the applicant proposes aluminum storefront elements on the east and west elevations, with Black Forest composite fiberboard panels in between. A total of four (4) overhead doors are proposed. One (1) glass overhead door is located on the east side, two (2) overhead doors are located on the west side, and one (1) overhead door is proposed on the south side, facing Arnage Drive. No overhead doors are proposed on the north elevation facing I-64.



Figure 5: Front Elevation (North side)

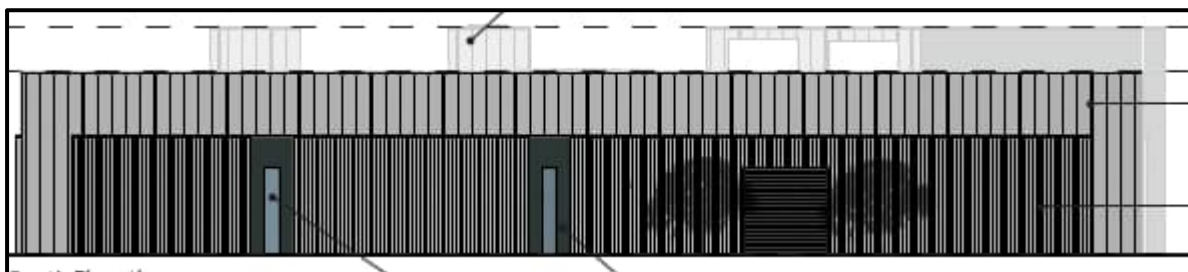


Figure 6: North Elevation

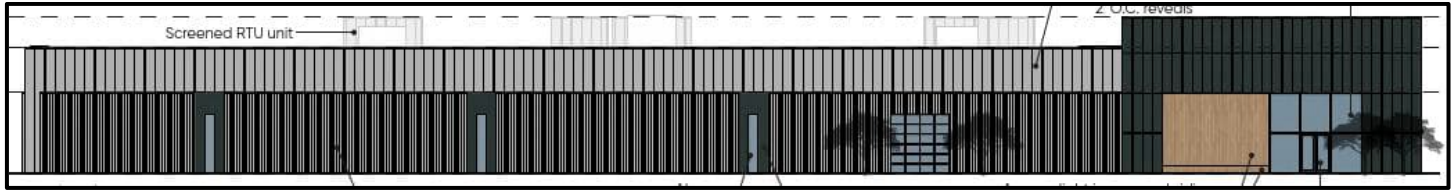


Figure 7: East Elevation

### Lighting

A total of 29 light fixtures are proposed for the development, including parking lights and wall pack lights. All of the proposed light fixtures comply with City code. The lighting plan is attached in the packet.

### Landscaping

The proposed landscape plan includes a mix of shade trees, ornamental trees, evergreen trees, shrubs, and ground cover. One (1) bio-retention basin is proposed on the south side of the site. Additionally, landscape planters are proposed against the building.

The development includes 55 display spaces, 28 of which are located along I-64 and will be screened with trees and shrubs. The remaining display spaces are located on the east side and will be screened with a combination of shade and evergreen trees.

In addition, landscape buffers are proposed along Arnage Road. Overall, the development is designed to provide approximately 31.3% open space.

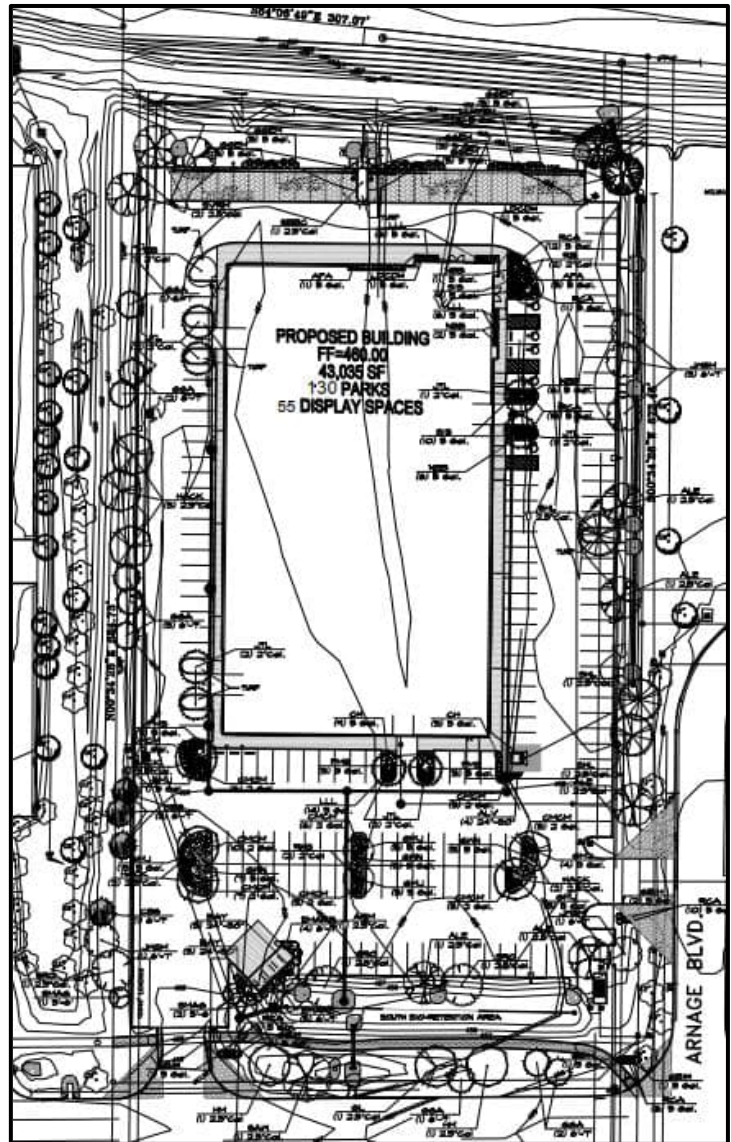


Figure 8: Landscape Plan

## Rendering



Figure 9: Rendering (view from I-64)

## **DEPARTMENTAL INPUT**

Be advised, this project is under review by City Staff and will not proceed to the Planning Commission until all outstanding items have been addressed. All recommendations made by the ARB will be included in Staff's report to the Planning Commission.

## **MOTION**

The following options are provided to the Architectural Review Board for consideration relative to this application:

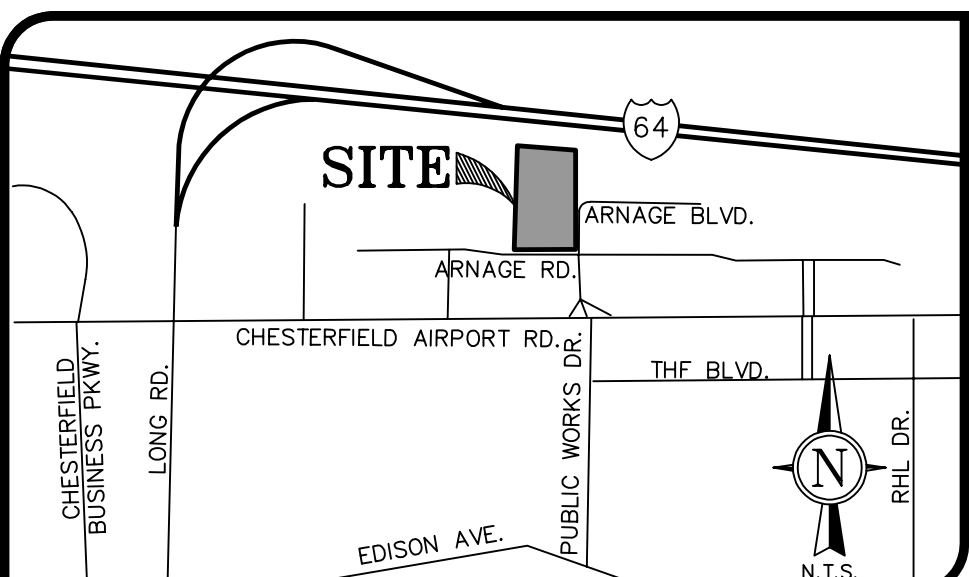
- 1) "I move to forward the Site Development Section Plan, Landscape Plan, Lighting Plan, and Architectural Elevations for Chesterfield Commons Seven, Lot 3, as presented, with a recommendation for approval (or denial)."
- 2) "I move to forward the Site Development Section Plan, Landscape Plan, Lighting Plan, and Architectural Elevations for Chesterfield Commons Seven, Lot 3, with a recommendation for approval with the following conditions..."

## Attachments

1. Architectural Review Packet Submittal

# RIVIAN SERVICE CENTER CHESTERFIELD, MO

CONCEPT DESIGN  
APRIL 01, 2026



**OPEN SPACE PERCENTAGE**

SITE AREA 4.963 ACRES (204,435 SF)  
 OPEN SPACE 1.553 ACRES (67,872 SF)  
 OPEN SPACE PERCENTAGE 1.553 AC./4.963 AC x 100=33%  
 BUILDING 0.988 ACRES (43,035 SF)  
 PAVED AREA 1.971 ACRES (85,865 SF)  
 SIDEWALK AREA 0.176 ACRES (7,663 SF)

**PERTINENT DATA**

CURRENT ZONING "PC" PLANNED COMMERCIAL DISTRICT  
 SITE AREA 4.963 ACRES  
 WATER SHED MISSOURI RIVER  
 WATER DISTRICT MISSOURI AMERICAN WATER  
 FIRE DISTRICT MONARCH FIRE DISTRICT  
 SCHOOL DISTRICT ROCKWOOD R-6  
 SEWER DISTRICT METROPOLITAN ST. LOUIS SEWER DISTRICT (MSD)  
 FEMA MAP NUMBER 29189C0145 K  
 DATE: FEB. 4, 2015

**OWNERSHIP INFO**

OWNER NET PROP HOLD CO LLC  
 3167 FEE FEE RD  
 BRIDGETON, MO 63044  
 PREVIOUS OWNER THF CHESTERFIELD SEVEN DEVELOPMENT L L C  
 211 N STADIUM BLVD SUITE 201  
 COLUMBIA, MO 65203

**TSG CHESTERFIELD AIRPORT ROAD**  
 PLAT BOOK 368, PAGE 313

**UTILITY CONTACTS:**

WATER: MO. AMERICAN WATER CO.  
 727 CRAIG ROAD  
 ST. LOUIS, MO. 63141  
 TEL. (314) 996-2466  
 SEWER: METROPOLITAN SEWER DISTRICT  
 2350 MARKET STREET  
 ST. LOUIS, MO. 63103  
 TEL. (314) 768-6200  
 ELECTRIC POWER: AMEREN MISSOURI  
 ELLISVILLE DISTRICT  
 280 OLD STATE ROAD  
 ELLISVILLE, MO 63021  
 TEL. (866) 992-6619  
 NATURAL GAS: SPIRE  
 720 OLIVE STREET, RM. 1413  
 ST. LOUIS, MO. 63101  
 TEL. (314) 342-0878

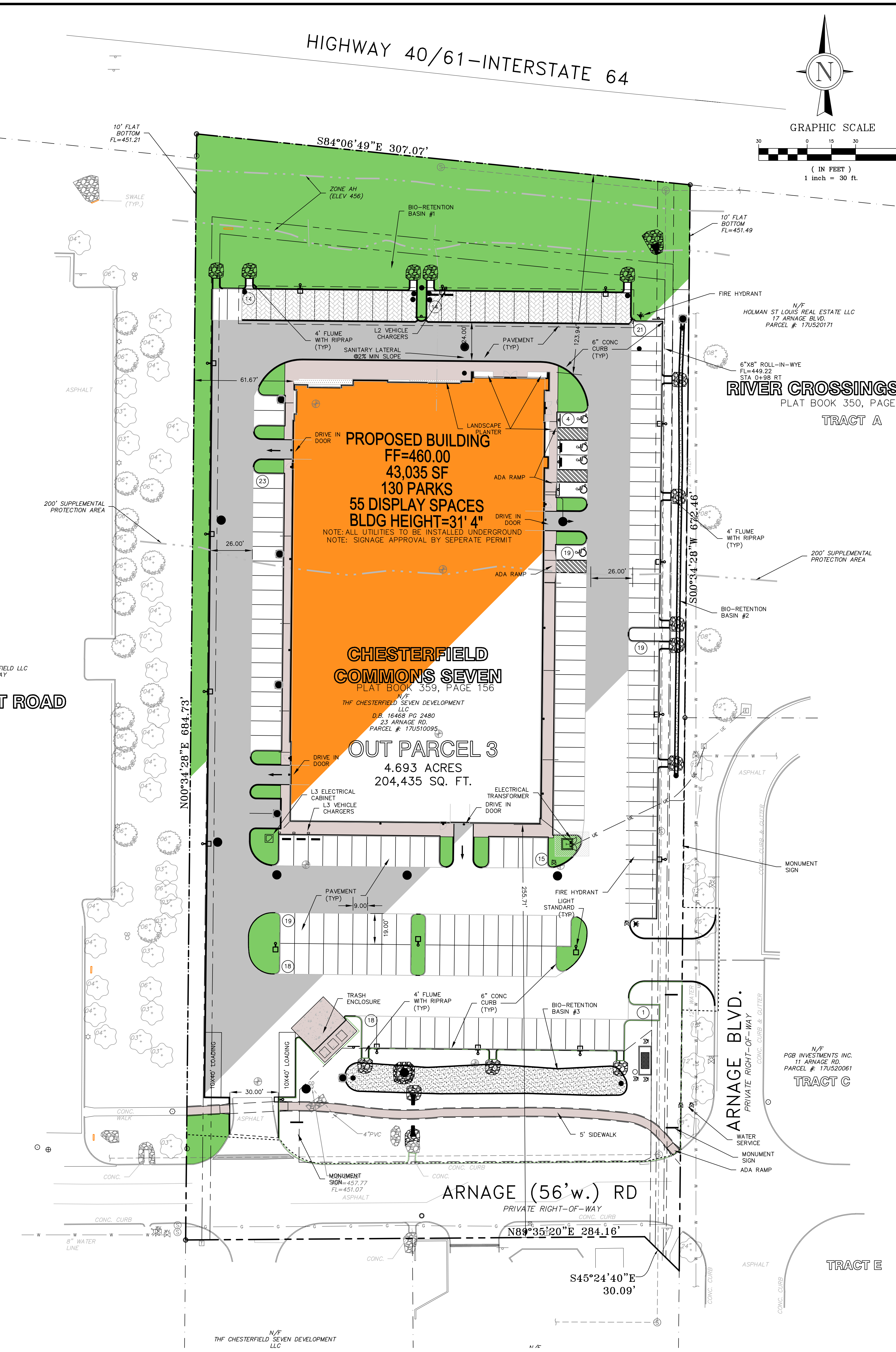
**BENCHMARK:**

**STL CO. #12-171: 459.01 FUS NAV088**  
 - Standard DNR aluminum disk stamped  
 SL-38 situated in a grassy area northwest  
 of the intersection of Chesterfield Airport  
 Road and Caprice Drive, south of the parking  
 for a retail strip center approximately 0.1  
 miles east of Long Road; roughly 58 feet  
 west of the centerline of Caprice Drive, 42  
 feet north of the centerline of Chesterfield  
 Airport Road, and 69 feet east of a fire  
 hydrant.

**SITE BENCHMARK:**

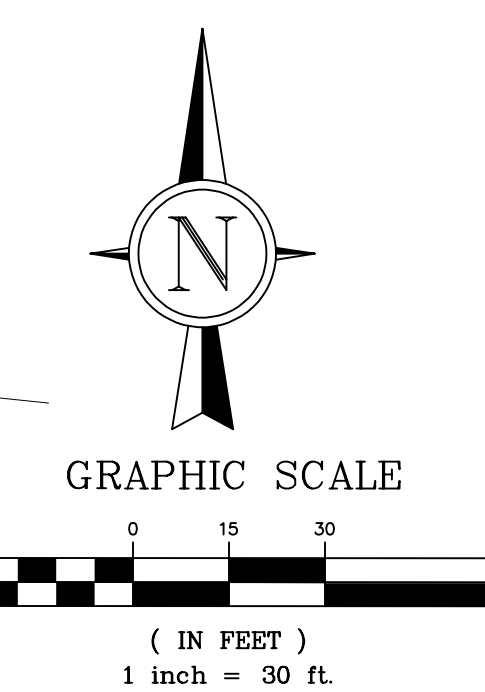
**458.88 FUS NGVD88**  
 - A 1/2" iron pipe situated at the Northeast  
 intersection of Arnage Road and Arnage Boulevard.  
 Roughly 2'± East of the East curb line of Arnage  
 Boulevard and 34'± North of the North curb line  
 of Arnage Road.

PREPARED FOR:  
**DDS BUILDING GROUP**  
 CONTACT: MATT GARVAGLIA  
 3167 FEE FEE RD  
 BRIDGETON, MO 63044  
 PH: (314) 578-3031



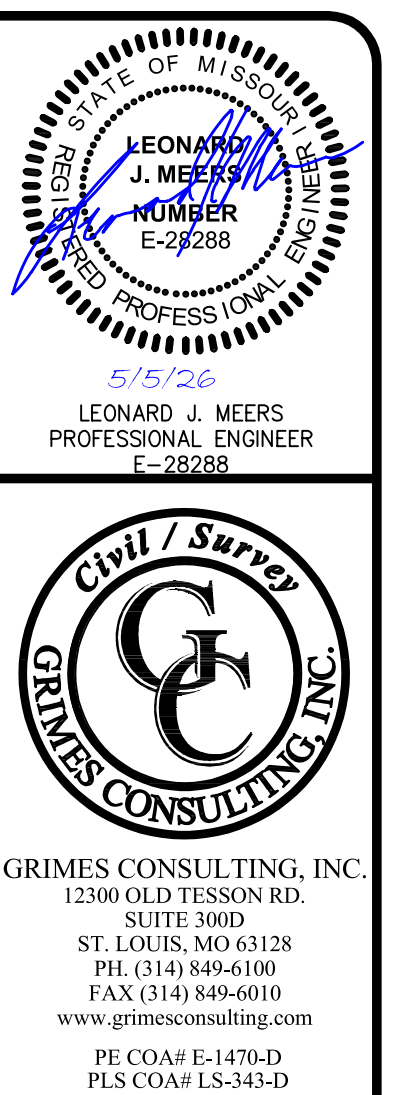
**A SITE DEVELOPMENT SECTION PLAN  
 RIVIAN SERVICE CENTER**

OUTPARCEL 3 OF CHESTERFIELD COMMONS SEVEN  
 PLAT BOOK 359, PAGE 156  
 CHESTERFIELD, ST. LOUIS COUNTY, MISSOURI



**PROPERTY PLANS**

LOCATION: 23 ARNAGE RD  
 CHESTERFIELD, MO 63005  
 DEVELOPMENT PLAN (v1)  
 01/22/26



DATE	REVISIONS

SITE DATA	
JURISDICTION	CITY OF CHESTERFIELD
ZONING DISTRICT	"PC" PLANNED COMMERCIAL
PERMITTED USE(S)	SALES, RENTAL, AND LEASING OF NEW AND USED VEHICLES, INCLUDING AUTOMOBILES, TRUCKS, TRAILERS, CONSTRUCTION EQUIPMENT, AGRICULTURAL EQUIPMENT, AND BOATS, AS WELL AS ASSOCIATED REPAIRS AND NECESSARY OUTDOOR STORAGE OF SAID VEHICLES EXCEPT THAT TRUCKS (EXCEPT PICK UP TRUCKS AND SUV'S), TRAILERS, CONSTRUCTION EQUIPMENT, AGRICULTURAL EQUIPMENT AND BOATS SHALL BE STORED INDOORS ONLY.
LOT AREA	204,392 SF (4+4.69 ACRES)
BUILDING AREA	43,025 SF
F.A.R.	CODE 0.55   PLAN 0.21
SETBACKS	
BUILDING SETBACKS	CODE PLAN
-FRONT YARD	60' 123.94'
-SIDE YARD	15' 64'
-REAR YARD	0' 255.71'
PARKING SETBACKS	CODE PLAN
-FRONT YARD	50' 70'
-SIDE YARD	10' 13' 8"(E) 10' 6"(W)
-REAR YARD	0' 115'
OFF STREET PARKING REQUIREMENTS	
CAR PARKING	133 min 135
OUTDOOR STORAGE	50
ADA STALLS	5 5
PARKING STALL SIZE	9'X19' 9'X19'
DRIVE AISLE WIDTH	22' 24/28'
ADDITIONAL NOTES	MINIMUM=3,000 GFA MAXIMUM=20% OF MINIMUM PARKING REQUIRED
BUILDING HEIGHT	45' 31' 4"
OPEN SPACE	30% (ORD. 2501) 33%



**LEGAL DESCRIPTION**  
 --- OUTPARCEL 3, CHESTERFIELD COMMONS SEVEN, P.B. 359, PAGE 156 ---  
 A TRACT OF LAND SITUATED IN THE CITY OF CHESTERFIELD, ST. LOUIS COUNTY, MISSOURI, LYING IN PART OF U.S. SURVEY 125, TOWNSHIP 45 NORTH, RANGE 4 EAST, AND BEING OUTPARCEL 3 OF CHESTERFIELD COMMONS SEVEN, A SUBDIVISION FILED FOR RECORD IN PLAT BOOK 359, PAGE 156 OF THE LAND RECORDS OF SAID ST. LOUIS COUNTY, MISSOURI, AND BEING MORE PARTICULARLY DESCRIBED AS FOLLOWS:  
 BEGINNING AT THE NORTHERNMOST CORNER OF TRACT A OF RIVER CROSSINGS RESUBDIVISION, A SUBDIVISION FILED FOR RECORD AS PLAT BOOK 350, PAGE 205 OF SAID LAND RECORDS, SAID NORTHERNMOST CORNER ALSO BEING ON THE SOUTHERN RIGHT-OF-WAY LINE OF MISSOURI INTERSTATE 64, VARIABLE WIDTH; THENCE ALONG THE WESTERN LINE OF SAID TRACT A, SOUTH 0 DEGREES 34 MINUTES 28 SECONDS WEST, A DISTANCE OF 672.32 FEET TO THE NORTHEAST CORNER OF OUTPARCEL 1 OF SAID CHESTERFIELD COMMONS SEVEN PLAT; THENCE LEAVING SAID WESTERN LINE OF TRACT A, AND ALONG THE NORTHERN LINE OF SAID OUTPARCEL 1, NORTH 45 DEGREES 24 MINUTES 40 SECONDS WEST, A DISTANCE OF 30.09 FEET; THENCE ALONG SAID NORTHERN LINE OF OUTPARCEL 1, AND ALONG THE NORTHERN LINE OF OUTPARCEL 2 OF SAID CHESTERFIELD COMMONS SEVEN PLAT, SOUTH 89 DEGREES 35 MINUTES 20 SECONDS WEST, A DISTANCE OF 284.16 FEET TO THE NORTHWEST CORNER OF SAID OUTPARCEL 2, SAID NORTHWEST CORNER BEING ON THE EASTERN LINE OF LOT A OF TSG CHESTERFIELD AIRPORT ROAD, A SUBDIVISION FILED FOR RECORD AS PLAT BOOK 368, PAGE 313 OF SAID LAND RECORDS; THENCE LEAVING SAID NORTHERN LINE OF OUTPARCEL 2 AND ALONG THE EASTERN LINE OF SAID LOT A, NORTH 0 DEGREES 34 MINUTES 28 SECONDS EAST, A DISTANCE OF 684.73 FEET TO SAID SOUTHERN RIGHT-OF-WAY LINE OF MISSOURI INTERSTATE 64, VARIABLE WIDTH; THENCE LEAVING SAID EASTERN LINE OF LOT A AND ALONG SAID SOUTHERN RIGHT-OF-WAY LINE OF MISSOURI INTERSTATE 64, SOUTH 84 DEGREES 06 MINUTES 49 SECONDS EAST, A DISTANCE OF 307.07 FEET TO THE POINT OF BEGINNING.  
 CONTAINING 4.693 ACRES (204,435 SQUARE FEET), BY GRIMES CONSULTING, INC., LS-343-D, DATED FEBRUARY 2026.

THE OWNER(S) OF THE PROPERTY SHOWN ON THIS PLAN FOR AND IN CONSIDERATION OF BEING GRANTED APPROVAL OF SAID PLAN TO DEVELOP PROPERTY UNDER THE PROVISIONS OF SECTION 03.040, PC-PLANNED COMMERCIAL DISTRICT OF CITY OF CHESTERFIELD UNIFIED DEVELOPMENT CODE, DO HEREBY AGREE AND DECLARE THAT SAID PROPERTY FROM THE DATE OF RECORDING THIS PLAN SHALL BE DEVELOPED ONLY AS SHOWN THEREON, UNLESS SAID PLAN IS AMENDED BY THE CITY OF CHESTERFIELD, OR VOIDED OR VACATED BY ORDER OF ORDINANCE OF THE CITY OF CHESTERFIELD COUNCIL.

(SIGNATURE): \_\_\_\_\_  
 (PRINT NAME): \_\_\_\_\_  
 STATE OF MISSOURI ) ss.  
 COUNTY OF ST. LOUIS )  
 ON THIS \_\_\_\_\_ DAY OF \_\_\_\_\_ A.D., 2026, BEFORE ME PERSONALLY APPEARED \_\_\_\_\_ AND \_\_\_\_\_ TO BE KNOWN (INDIVIDUAL) (INDIVIDUAL) TO BE THE PERSON(S) DESCRIBED IN, AND WHO EXECUTED THE FOREGOING INSTRUMENT, AND ACKNOWLEDGED THAT HE, SHE OR THEY EXECUTED THE SAME AS HIS, HER, OR THEIR FREE ACT AND DEED. IN TESTIMONY WHEREOF, I HAVE HEREUNTO SET MY HAND AND AFFIXED MY NOTARIAL SEAL AT MY OFFICE IN \_\_\_\_\_ THE DAY AND YEAR LAST ABOVE WRITTEN. (COUNTY AND STATE)  
 MY TERM EXPIRES \_\_\_\_\_ (NOTARY PUBLIC)

THIS SITE DEVELOPMENT PLAN WAS APPROVED BY THE CITY OF CHESTERFIELD PLANNING COMMISSION AND DULY VERIFIED ON THE \_\_\_\_\_ DAY OF \_\_\_\_\_ 20\_\_\_\_ BY THE CHAIRPERSON OF SAID COMMISSION, AUTHORIZING THE RECORDING OF THIS SITE DEVELOPMENT PLAN PURSUANT TO CHESTERFIELD ORDINANCE NUMBER 200, AS ATTESTED TO BY THE DIRECTOR OF PLANNING AND THE CITY CLERK.

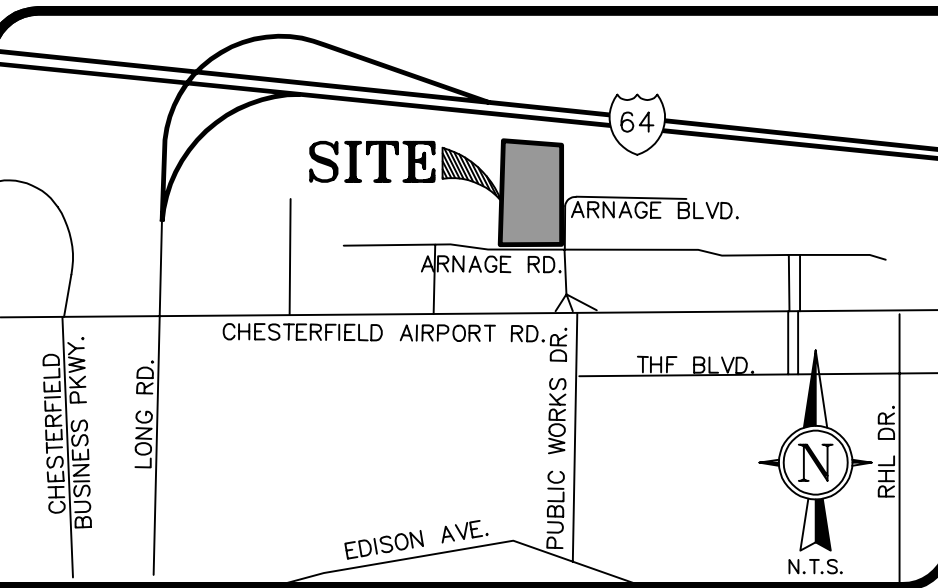
JUSTIN WYSE, AICP  
 DIRECTOR OF PLANNING  
 CITY OF CHESTERFIELD, MISSOURI  
 VICKIE MCGOWN, CITY CLERK  
 CITY OF CHESTERFIELD  
 M.S.D. BASE MAP 17U  
 LOC. NO. 17U510095  
 ZIP CODE 63005

**IMPROVEMENT PLANS FOR  
 RIVIAN SERVICE CENTER**  
 23 ARNAGE RD, CHESTERFIELD, MO 63005

**COLOR SITE PLAN**

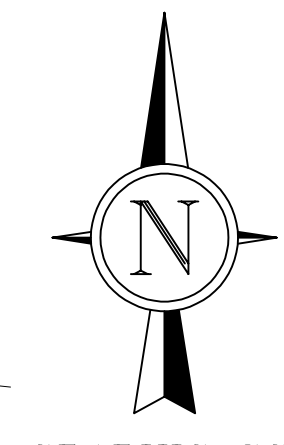
JOB NUMBER:	4434
DRAWN BY:	JLW
DATE:	02/12/26
CHECKED BY:	LJM
DATE:	02/12/26
SHEET:	

**C2.0**



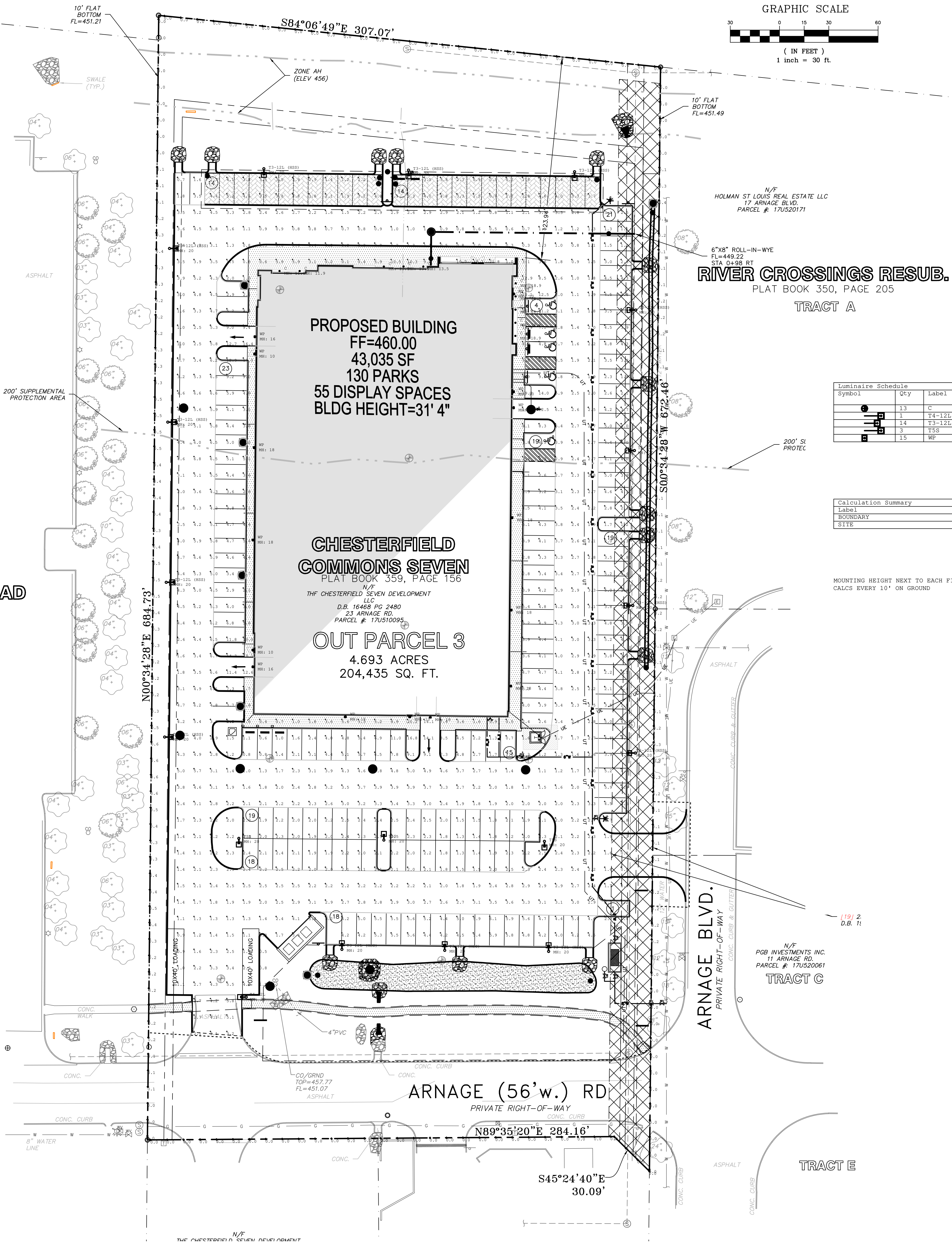
# A SITE DEVELOPMENT SECTION PLAN RIVIAN SERVICE CENTER

OUTPARCEL 3 OF CHESTERFIELD COMMONS SEVEN  
PLAT BOOK 359, PAGE 156  
CHESTERFIELD, ST. LOUIS COUNTY, MISSOURI



GRAPHIC SCALE  
( IN FEET )  
1 inch = 30 ft.

HIGHWAY 40/61-INTERSTATE 64



N/F  
HOLMAN ST LOUIS REAL ESTATE LLC  
17 ARNAGE BLVD.  
PARCEL # 17U520171

6'x8' ROLL-IN-WYE  
FL=449.22  
S/A 0+98 RT  
**RIVER CROSSINGS RESUB.**  
PLAT BOOK 350, PAGE 205  
TRACT A

Symbol	Qty	Label	Arrangement	Description	LLF	Luminaire Lumens	Luminaire Watts	Total Watts
13	0	T4-12L	Single	HC4200010-HM40525840-41WDC	0.900	2368	20	260
14	1	T3-12L (HSS)	Single	SAS-12L-U-40-T4	1.000	13175	82.2	82.2
3	3	T5S	Single	SAS-12L-U-40-T5S	1.000	9111	82.2	1150.8
15	3	WP	Single	SAS-12L-U-40-T5S	1.000	16916	108.1	324.3
					1.000	11043	86.2	1293

Label	CalcType	Units	Avg	Max	Min	Avg/Min	Max/Min
BOUNDARY	Illuminance	Fc	0.15	0.6	0.0	N/A	N/A
SITE	Illuminance	Fc	3.52	30.7	0.1	35.20	307.00

MOUNTING HEIGHT NEXT TO EACH FIXTURE  
CALCS EVERY 10' ON GROUND

DESIGN IS BASED ON CURRENT INFORMATION PROVIDED AT THE TIME OF REQUEST.  
ANY CHANGES IN MOUNTING HEIGHT OR LOCATION, LAMP WATTAGE, LAMP TYPE, AND  
EXISTING FIELD CONDITIONS, THAT AFFECT ANY OF THE PREVIOUSLY MENTIONED, WILL  
VOID CURRENT LAYOUT AND REQUIRE A CHANGE REQUEST AND RECALCULATION.

N/F  
GREENBAY PROPERTIES CHESTERFIELD LLC  
1 JAGUAR LAND ROVER WAY  
PARCEL # 17U510116  
**TSG CHESTERFIELD AIRPORT ROAD**  
PLAT BOOK 368, PAGE 313

**CHESTERFIELD COMMONS SEVEN**  
PLAT BOOK 359, PAGE 156  
THE CHESTERFIELD SEVEN DEVELOPMENT  
LLC  
D.B. 16468 PG 2480  
23 ARNAGE RD.  
PARCEL # 17U510095  
**OUT PARCEL 3**  
4.693 ACRES  
204,435 SQ. FT.

N/F  
PGB INVESTMENTS INC.  
11 ARNAGE RD.  
PARCEL # 17U520061  
**TRACT C**

**TRACT E**

PREPARED FOR:  
**DDS BUILDING GROUP**  
CONTACT: MATT GARVAGLIA  
3167 FEE FEE RD  
BRIDGETON, MO 63044  
PH: (314) 578-3031

PREPARED BY: LIGHTING ASSOCIATES  
M.S.D. BASE MAP 17U  
LOC. NO. 17U510095  
ZIP CODE 63005



GRIMES CONSULTING, INC.  
12300 OLD TESSON RD.  
SUITE 300  
ST. LOUIS, MO 63128  
PH: (314) 848-4000  
FAX: (314) 848-4010  
www.grimesconsulting.com  
PE COAF E-1470-D  
PES COAF US-445-D

REV. NO.	DATE	REMARKS
1		
2		
3		
4		
5		

IMPROVEMENT PLANS FOR  
**RIVIAN SERVICE CENTER**  
23 ARNAGE RD., CHESTERFIELD, MO 63005

SHEET TITLE  
**PHOTOMETRICS PLAN**

JOB NUMBER: **4434**  
DRAWN BY: **JLW**  
DATE: **02/12/26**  
CHECKED BY: **LJM**  
DATE: **02/12/26**  
SHEET:

**L1.0**





2/12/2026

### **City of Chesterfield**

690 Chesterfield Pkwy W  
Chesterfield, MO 63017

### **Rivian Sales and Service Center - 23 Arnage Blvd**

#### Architect's Statement of Design

The proposed Rivian Service Center is designed to meet the City of Chesterfield's General Requirements for Building Design by emphasizing contextual scale, durable materials, and articulated masses.

#### **Scale**

The building massing is compatible with surrounding development along Arnage Road and its frontage of Interstate 64 consisting of low-rise commercial structures. Variation in parapet heights and articulated building volumes reduces the perceived scale and responds to similar businesses along the I-64 corridor. We reinforced the human scale through façade articulation, textural changes, and material transitions. Wood wall panels that integrate into planters near the building entry provide warmth and interest at the pedestrian level. This helps ground the building and provide a welcoming entrance for visitors.

#### **Design**

The design reinforces Rivian's commitment to sustainability and expression through materiality. Tilt-up concrete panels provide a robust foundation for the building design. The large glass storefront provides visual interest and identifies the primary entrance. The composite fiber board provides a strong contrast to the building while the wood paneling provides finer granularity and elevated accent materials. These features respond and compliment to the established rhythm of adjacent building.

#### **Materials and Color**

The durable concrete provides a naturally lighter backdrop for the main entry. This construction type also lends itself to unique reveals and textural changes across the building. The wood screen provides warmth with subtle accented colors when compared to the more neutral concrete and composite fiber board. These materials were selected with their durability in mind while visually responding to the building context.



**Screening**

A simple CMU trash enclosure responds nicely to the material expressions found within the building while being a typical screening material to help minimize visual impact and tie the building's site together.

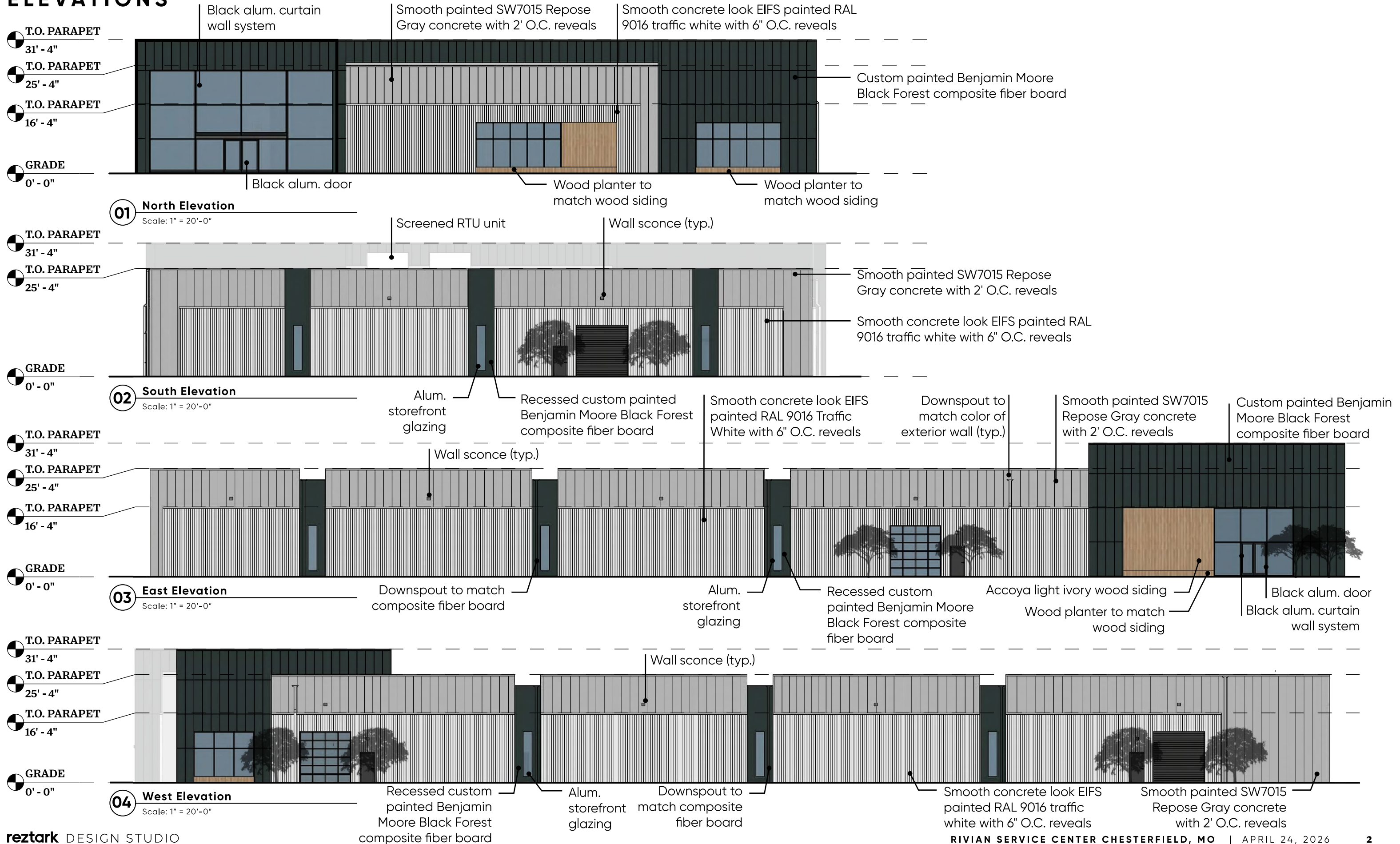
Kind Regards

A handwritten signature in black ink, appearing to read 'Mark Specker', with a long, sweeping horizontal line extending to the right.

Mark Specker  
Senior Architect



# ELEVATIONS



# NORTHEAST CORNER



# NORTHWEST CORNER



SOUTHEAST CORNER



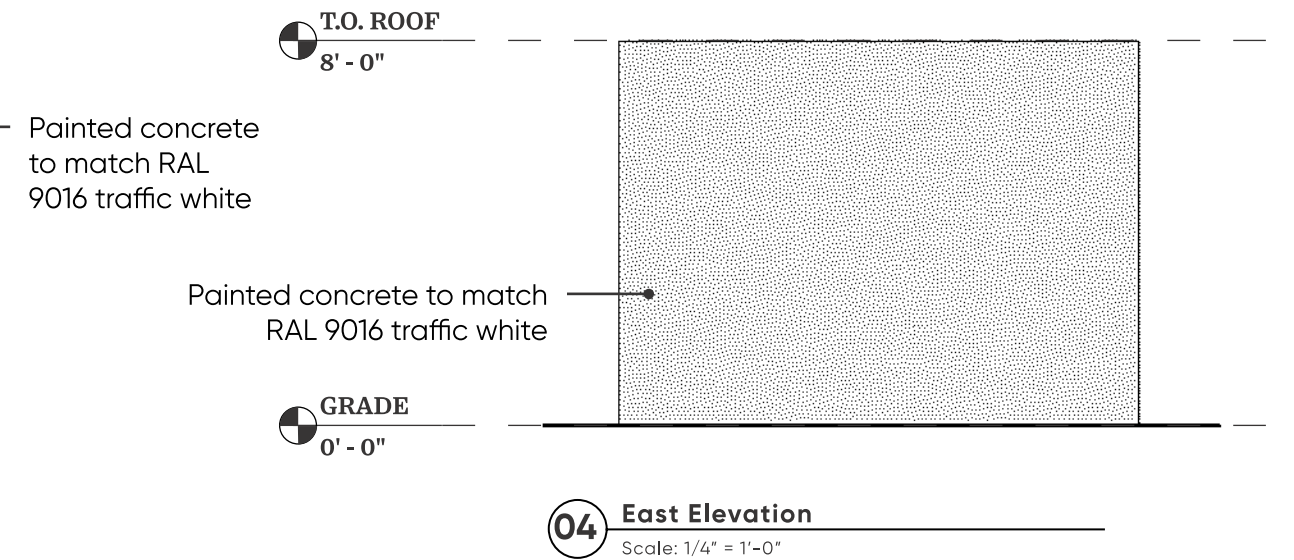
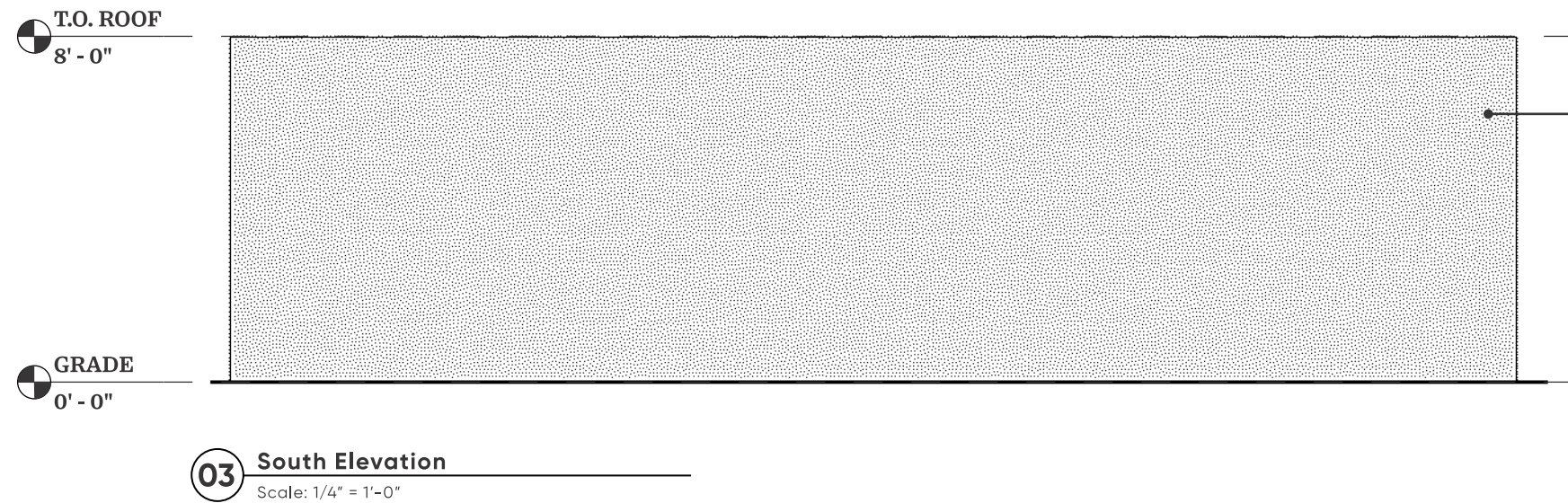
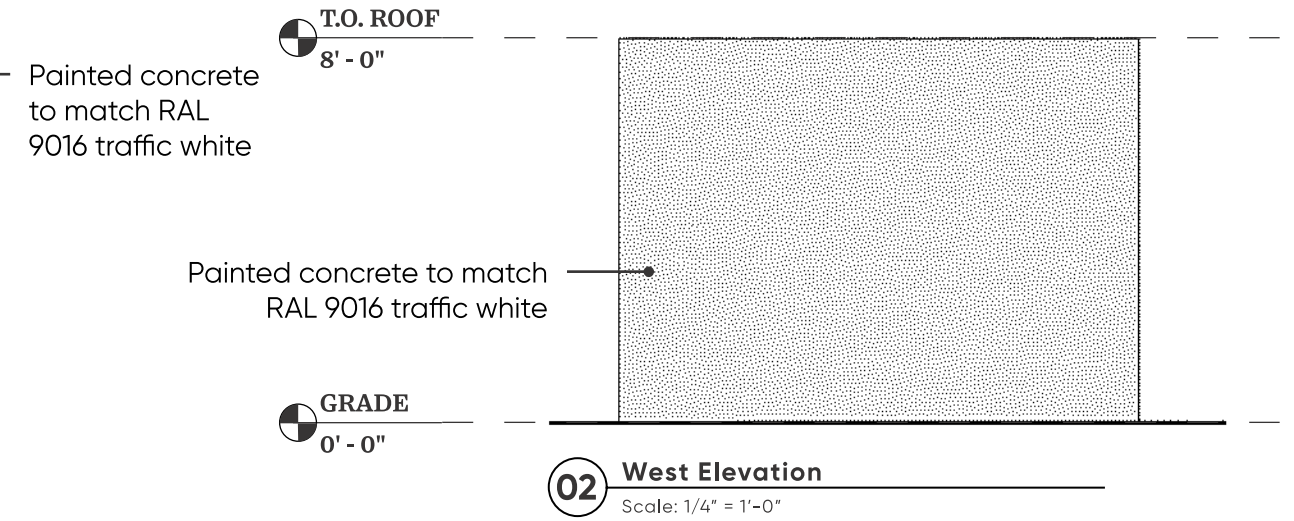
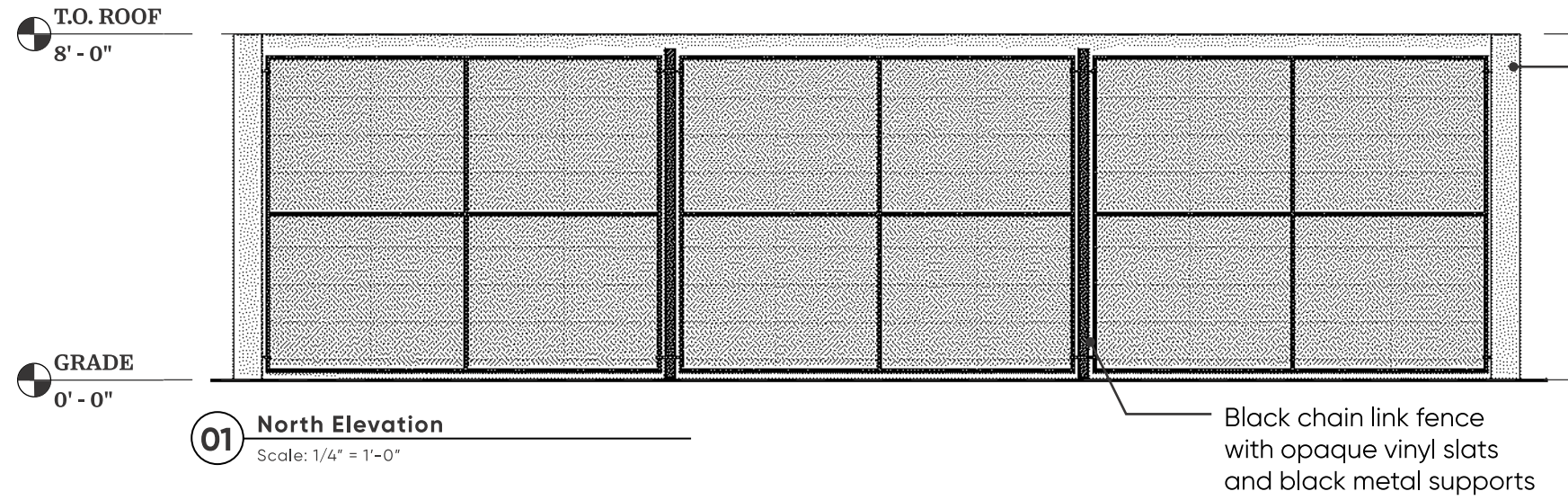
AERIAL VIEW



# NIGHT VIEW



# TRASH ENCLOSURE ELEVATIONS



**Thank You**  
FOR YOUR TIME



# SKYLINE

## AREA LIGHT SERIES

PRODUCT  
OVERVIEW



SCAN OR  
CLICK HERE

## FEATURES

- Delivers uniform and precise lighting with five factory-rotatable optical distributions for maximum coverage.
- Simplifies installation with a no-drilling quick pole mount, enabling one-person setup on existing poles.
- Ensures long-lasting performance with an IP66-rated die-cast aluminum housing and UV-stabilized optics.
- Offers advanced control options with wireless integration, PIR occupancy sensors, and bi-level dimming capabilities.
- Adapts to diverse applications with nine mounting methods, including tilt-adjustable and fixed configurations.
- Reduce light spill with optional integrated house-side shields for improved site control.

## DIGITAL NAVIGATION

Explore the spec sheet through the links below

[ORDERING GUIDE](#)

[LED SYSTEMS TABLE](#)

[EPA RATINGS VIBRATION CHART](#)

[TILT DEGREE](#)

[ELECTRICAL DATA AMPS](#)

[FIELD ADJUSTABLE OUTPUT DATA](#)

[CONTROLS](#)

[BACKLIGHT CONTROL OPTIONS](#)

[LINE DRAWINGS](#)

[PHOTOMETRIC DATA](#)



\* Shown with UMB Mounting

## SUITABLE APPLICATIONS

- Parking Lots
- Parking Structure
- Parks
- Education
- Hospitals
- Car Dealerships
- Roadways
- Shopping Centers

## CERTIFICATIONS



\*Specific Models Only

## SPECIFICATIONS

### CONSTRUCTION

The Skyline series features a slim profile die-cast aluminum housing available in 2 different sizes for a fully scalable solution. The versatile 9 optional mounting methods allow for easy installation while the hinged door allows for quick drop-down driver access for maintenance. The fully gasketed housing is IP66 rated for whole luminaire ingress protection against moisture and environmental contaminants. The Skyline's low-profile design results in a low EPA, allowing pole optimization to thinner or smaller size pole shafts. Vibration rated per ANSI C136.31 on all mountings (see table Above). The Skyline Series is protected with a durable bronze polyester powder coat finish to withstand extreme weather changes without cracking or peeling.

### OPTICS

The IP66 silicone gasket sealed optical chamber utilizes proprietary refractive optics to provide exceptional coverage and uniformity in factory rotatable IES Types 2, 3, 4, 5S (Square) or FTA (Forward Throw Automotive). Polycarbonate optics are impact resistant and UV stabilized for maximum longevity. Available in 5000K, 4000K, and 3000K, color temperatures per ANSI C78.377. Minimum CRI of 70. The optical integrated House side shield (HSS) option allows for improved backlight control without any large shields taking away from the site. The Skyline series produces Zero upright and is DarkSky approved in 3000K color temperature. Optional field installed 3-sided glare shield accessory is available for on-site external house side protection.

### ELECTRICAL

Class 1 High-performance drivers features over-voltage, under-voltage, short circuit and over temperature protection. 0-10V dimming (10% - 100%) standard. Standard Universal Voltage (120-277 Vac) Input 50/60 Hz or optional High Voltage (277-480 Vac). L80 >100,000 hrs. in accordance with IESNA TM-21-19 projected values at 25°C Ambient temperature. Total harmonic distortion: <20%. Power factor: >0.90. Input power stays constant over life. Minimum 6kV surge rating meets a minimum Category C Low operation (per ANSI/IEEE C62.41.2). Additional protection is available in 10kV and 20kV options.

### THERMAL

The Skyline Series features an array of High-efficiency LED's mounted on a metal core circuit board. The LED boards are mounted directly to the cast aluminum housing with heat dissipating fins to provide excellent thermal performance extending the life of electronic components. Operating Ambient Temperature: -40°C to +50°C (-40°F to 122°F) 50L Lumen -Package: -40°C to +45°C (-40°F to 113°F).

### INSTALLATION

The Skyline series offers nine versatile mounting options. The standard universal mounting bracket (UMB) allows for a quick, no-drill, one-person installation on existing pole drillings. The UMB quick mount fits 4-6" square poles, while the UMB/R adapts to 3-6" round poles. The universal adjustable bracket (UAB) adds full tilt capability. Wall mounting options include the fixed (WFM) and adjustable (WAM) mounts. The horizontal mast arm (HMA) fits 2" (2-3/8" OD) mast arms. The slip fitter (SLPF), rated 1.5G, supports vertical or horizontal tenons with full tilting, while all other arms are 3G-rated. The trunion/yoke bracket (TRN) enables flood applications. All mounts include a 3-wire, 3' outdoor-rated cord, with a 5-wire option available for external dimming. See charts for vibration, weight, and EPA details. Skyline is DarkSky approved for fixed mounting options only.

### CONTROLS

Factory installed 3-Pin & 7-Pin ANSI C136.41 Control Receptacle Options available. Dusk to Dawn twist lock photocells sold separately (See accessories). Optional PIR sensors available installed in housing hinged door. See controls section for detailed information on standalone and wireless control options.

### CERTIFICATIONS

ETL Listed for wet locations per UL 1598 standards.. Tested in accordance with IESNA LM-79 and LM-80 standards. BAA compliant. RoHS Compliant. Title 24 Compliant; see local ordinance for qualification information. IP66 rated Luminaire per IEC 60598. IP66 rated optical chamber. Finish salt-spray tested to 500 hours per ASTM B117.

DLC Premium Listed Product, Not all versions of this product may be DLC Premium qualified. Please check the DLC Qualified Products List at [www.designlights.org/QPL](http://www.designlights.org/QPL) to confirm which versions are qualified.

### WARRANTY

5 Year Warranty Standard; 10 Year Warranty Optional ([Terms and Conditions apply](#)).

CONTINUE TO NEXT PAGE



**ORDERING GUIDE**

PART #

Example: SAM-24L-U-50-T4-UMB-BRZ-HSS-NURO

SERIES	LUMENS	DRIVER	CCT	DISTRIBUTION	ORIENTATION	MOUNTING
<b>SAS</b> Skyline Small	<b>6L</b> 6,000 lm <b>9L</b> 9,000 lm <b>12L</b> 12,000 lm <b>15L</b> 15,000 lm <b>18L</b> 18,000 lm	<b>U</b> 120-277V <b>HV</b> 277-480V	<b>30</b> 3000K <b>40</b> 4000K <b>50</b> 5000K	<b>T2</b> T2 - Type 2 <b>T3</b> T3 - Type 3 <b>T4</b> T4 - Type 4 <b>T5S</b> Type 5 Square <b>FTA</b> Forward Throw Automotive	<b>BLANK</b> Standard <b>L</b> Optics Rotated Left <b>R</b> Optics Rotated Right	<b>SLPF</b> Adjustable Slip Fitter <b>UMB</b> Universal Fixed <b>UMB/R</b> Universal Mount Sqr/Rnd pole 3"-6" <b>UAB</b> Universal Adjustable <b>UAB/R</b> Universal Adjustable Sqr/Rnd pole 3"-6" <b>WFM</b> Wall Fixed Mount <b>WAM</b> Wall Adjustable Mount <b>TRN</b> Trunnion Mount <b>HTM</b> Horizontal Tenon Mount
<b>SAM</b> Skyline Medium	<b>24L</b> 24,000 lm <b>30L</b> 30,000 lm <b>36L</b> 36,000 lm <b>42L</b> 42,000 lm <b>50L</b> 50,000 lm					

FINISH	HSS	SML	CONTROLS OPTIONS	
			BASIC	ADVANCED
<b>BRZ</b> Bronze <b>BLK</b> Black <b>WHT</b> White <b>SLV</b> Silver <b>NAT</b> Natural Aluminum <b>RALxxxx</b> <sup>8</sup> Custom (xxxx= Custom RAL#)	<b>BLANK</b> None <b>HSS</b> <sup>2</sup> Rotatable House Side Shield	<b>BLANK</b> None <b>SMLxxxx</b> Specified Lumen Output (xxxx= Lumen Output, Nearest Hundred)	<b>BLANK</b> None <b>FAO</b> Field Adjustable Output <b>CR3P</b> 3-Pin NEMA Control receptacle <b>CR7P</b> <sup>6</sup> 7-Pin NEMA Control receptacle <b>FSP311/LX</b> <sup>3</sup> Legrand FSP-311 120/277V Sensor (X = Mounting Height, 3=10-20', 7=20-40') <b>FSP321/LX</b> <sup>3</sup> Legrand FSP-321 120-480V Sensor (X = Mounting Height 3=10-20';7=20-40') <b>CR3P/FAO</b> Universal 3-Pin control receptacle (See acc. for photocells) with Field Adjustable Output - 7 level selection connected to 0-10V dimming wires <b>CR7P/FSP/Lx</b> Universal 7-Pin control receptacle with FSP Sensor (X= Mounting Height, 3=20', 7=40') (Controls provided by others)	<b>BLANK</b> None <b>NURO</b> <sup>1,3</sup> NUROAir Plug n Play Bluetooth Groupable Sensor <b>SYN</b> <sup>5</sup> Synapse Control System <b>SYNS/LX</b> <sup>5</sup> Synapse Control System w/ Sensor (X = Mounting Height 3=10-20'; 7=20-40')

PROTECTION	WARRANTY	SHIP WITH ACCESSORIES
<b>BLANK</b> None <b>SP1</b> <sup>1</sup> 10kA Surge Protection Device <b>SP2</b> <sup>1</sup> 20kA Surge Protection Device <b>SP1HV</b> 10kA Max 480V Surge Protector <b>SP2HV</b> 20kA Max 480V Surge Protector <b>FUSE/SXXX</b> FUSE 120V, 277V, 347V (x= voltage) <b>FUSE/DXXX</b> FUSE 208V, 240V, 480V (x= voltage)	<b>BLANK</b> 5 Year <b>10YR</b> <sup>2</sup> 10 Year	<b>BLANK</b> None <b>SAX/BIRD/yyy</b> Bird Spikes (x= fixture size) (yyy=finish) <b>SAX/GS/yyy</b> <sup>2</sup> Rotatable Glare Shield (x= fixture size) (yyy=finish) <b>ILP PAINT CHIP PACK</b> yyy ILP Standard Color Paint Chips (yyy=finish) <b>TLSC</b> <sup>4</sup> Twist Lock Shorting cap for use with CRxP Option (120V-480V) <b>TL7/HVG</b> <sup>5,7</sup> Synapse Twist Lock Mesh Network 120-480V <b>TLPC/HV</b> <sup>4</sup> 277-480V Twist Lock Photocell <b>TLPC/UNV</b> <sup>1,4</sup> 120-277V Twist Lock Photocell

**FOOTNOTES**

- <sup>1</sup> Not available with HV option
- <sup>2</sup> Option Not DLC qualified
- <sup>3</sup> Requires Bluetooth Enabled device for programming (provided by others)
- <sup>4</sup> Only Compatible with CR3P and CR7P
- <sup>5</sup> Contact Factory for Site Layout, For HV models contact Factory for pricing.
- <sup>6</sup> Dimming Leads will be wired to receptacle unless otherwise specified
- <sup>7</sup> CR7P Required
- <sup>8</sup> Contact factory for pricing and availability
- <sup>9</sup> Requires additional Surge Protection (SP1, SP2, SP480V2); For additional details see General Terms and Conditions. Consult Factory for pricing



**DARKSKY APPROVED ORDERING GUIDE**

PART #

Example: SAM-24L-U-30-T4-UMB-BRZ-HSS-NURO

SERIES		LUMENS		DRIVER	CCT	DISTRIBUTION	ORIENTATION	MOUNTING
SAS	Skyline Small	6L	6,000 lm	U 120-277V HV 277-480V	30 3000K	T2	T2 - Type 2	UMB Universal Fixed UMB/R Universal Mount Sqr/Rnd pole 3"-6" WFM Wall Fixed Mount HTM Horizontal Tenon Mount
		9L	9,000 lm			T3	T3 - Type 3	
		12L	12,000 lm			T4	T4 - Type 4	
		15L	15,000 lm			T5S	Type 5 Square	
18L	18,000 lm	FTA	Forward Throw Automotive	L	Optics Rotated Left	R	Optics Rotated Right	
SAM	Skyline Medium	24L	24,000 lm					
		30L	30,000 lm					
		36L	36,000 lm					
		42L	42,000 lm					

FINISH		HSS	SML	CONTROLS OPTIONS		
				BASIC	ADVANCED	
BRZ	Bronze	BLANK	None	BLANK	None	
BLK	Black	HSS <sup>2</sup>	Rotatable	CR3P	3-Pin NEMA Control receptacle	
WHT	White		House	CR7P <sup>6</sup>	7-Pin NEMA Control receptacle	
SLV	Silver		Side	FSP311/LX <sup>1,3</sup>	Legrand FSP-311 120/277V Sensor (X = Mounting Height, 3=10-20', 7=20-40')	
NAT	Natural		Shield	FSP321/LX <sup>3</sup>	Legrand FSP-321 120-480V Sensor (X = Mounting Height 3=10- 20',7=20-40')	
RALxxxx <sup>8</sup>	Custom (xxxx= Custom RAL#)			CR3P/FAO	Universal 3-Pin control receptacle (See acc. for photocells) with Field Adjustable Output - 7 level selection connected to 0-10V dimming wires	
				CR7P/FSP/Lx	Universal 7-Pin control receptacle with FSP Sensor (X= Mounting Height, 3=20', 7=40') (Controls provided by others)	
					NURO <sup>1,3</sup>	NUROAir Plug n Play Bluetooth Groupable Sensor
					SYN <sup>5</sup>	Synapse Control System
					SYNS/LX <sup>5</sup>	Synapse Control System w/ Sensor (X = Mounting Height 3=10-20', 7=20-40')

PROTECTION		WARRANTY	SHIP WITH ACCESSORIES		
BLANK	None	BLANK	5 Year	BLANK	None
SP1 <sup>1</sup>	10kA Surge Protection Device	10YR <sup>7</sup>	10 Year	SAX/BIRD/yyy	Bird Spikes (x= fixture size) (yyy=finish)
SP2 <sup>1</sup>	20kA Surge Protection Device			SAX/GS/yyy <sup>2</sup>	Rotatable Glare Shield (x= fixture size) (yyy=finish)
SP1HV	10kA Max 480V Surge Protector			ILP PAINT CHIP PACK <sup>yyy</sup>	ILP Standard Color Paint Chips (yyy=finish)
SP2HV	20kA Max 480V Surge Protector			TLSC <sup>4</sup>	Twist Lock Shorting cap for use with CRxP Option (120V-480V)
FUSE/SXXX	FUSE 120V, 277V, 347V (x= voltage)			TL7/HVG <sup>5,7</sup>	Synapse Twist Lock Mesh Network 120-480V
FUSE/DXXX	FUSE 208V, 240V, 480V (x= voltage)			TLPC/HV <sup>4</sup>	277-480V Twist Lock Photocell
				TLPC/UNV <sup>4,4</sup>	120-277V Twist Lock Photocell

**FOOTNOTES**

- <sup>1</sup> Not available with HV option
- <sup>2</sup> Option Not DLC qualified
- <sup>3</sup> Requires Bluetooth Enabled device for programming (provided by others)
- <sup>4</sup> Only Compatible with CR3P and CR7P
- <sup>5</sup> Contact Factory for Site Layout, For HV models contact Factory for pricing.
- <sup>6</sup> Dimming Leads will be wired to receptacle unless otherwise specified
- <sup>7</sup> CR7P Required
- <sup>8</sup> Contact factory for pricing and availability
- <sup>9</sup> Requires additional Surge Protection (SP1, SP2, SP480V2); For additional details see General Terms and Conditions. Consult Factory for pricing



**LED SYSTEMS INFO**

LED SYSTEMS INFO		3000K		4000K		5000K		BUG Rating	Watts <sup>2</sup>	Replaces
Part Numbers	Distribution	Lumens	Efficacy	Lumens	Efficacy	Lumens	Efficacy			
SAS-6L	2	6322	138.0	6655	145.3	6788	148.2	B1-U0-G1	46 W	175W MH
	3	6301	137.6	6633	144.8	6766	147.7	B1-U0-G2		
	4	6234	136.1	6562	143.3	6693	146.1	B1-U0-G1		
	5S	6345	138.5	6679	145.8	6813	148.7	B3-U0-G2		
	FTA	6824	149.0	7183	156.8	7327	160.0	B1-U0-G1		
SAS-9L	2	8941	127.9	9412	134.6	9600	137.3	B1-U0-G2	70 W	250W MH
	3	8912	127.5	9381	134.2	9569	136.9	B2-U0-G2		
	4	8817	126.1	9281	132.8	9467	135.4	B2-U0-G2		
	5S	8973	128.4	9445	135.1	9634	137.8	B4-U0-G2		
	FTA	9650	138.1	10158	145.3	10361	148.2	B1-U0-G1		
SAS-12L	2	12693	154.4	13361	162.5	13628	165.8	B2-U0-G2	82 W	320W MH
	3	12652	153.9	13318	162.0	13584	165.3	B2-U0-G2		
	4	12516	152.3	13175	160.3	13439	163.5	B2-U0-G2		
	5S	12739	155.0	13409	163.1	13677	166.4	B4-U0-G2		
	FTA	13700	166.7	14421	175.4	14709	178.9	B2-U0-G1		
SAS-15L	2	16013	148.1	16856	155.9	17193	159.0	B2-U0-G2	108 W	400W MH
	3	15962	147.7	16802	155.4	17138	158.5	B2-U0-G2		
	4	15791	146.1	16622	153.8	16954	156.8	B2-U0-G2		
	5S	16070	148.7	16916	156.5	17254	159.6	B4-U0-G2		
	FTA	17283	159.9	18193	168.3	18557	171.7	B2-U0-G1		
SAS-18L	2	18245	138.5	19205	145.8	19589	148.7	B3-U0-G2	132 W	400W MH
	3	18186	138.1	19143	145.4	19526	148.3	B3-U0-G3		
	4	17984	136.6	18931	143.7	19310	146.6	B3-U0-G3		
	5S	18310	139.0	19274	146.3	19659	149.3	B5-U0-G3		
	FTA	19692	149.5	20728	157.4	21143	160.5	B2-U0-G1		
SAM-24L	2	23494	142.4	24730	149.9	25225	152.9	B3-U0-G3	165 W	400W MH
	3	23373	141.7	24603	149.1	25095	152.1	B3-U0-G4		
	4	23203	140.6	24424	148.0	24912	151.0	B3-U0-G4		
	5S	23911	144.9	25169	152.5	25672	155.6	B5-U0-G3		
	FTA	23559	142.8	24799	150.3	25295	153.3	B2-U0-G2		
SAM-30L	2	30061	135.0	31643	142.1	32276	144.9	B3-U0-G3	222 W	750W MH
	3	29906	134.3	31480	141.4	32110	144.2	B3-U0-G4		
	4	29688	133.3	31251	140.3	31876	143.1	B3-U0-G4		
	5S	30594	137.4	32204	144.6	32848	147.5	B5-U0-G4		
	FTA	30144	135.4	31730	142.5	32365	145.3	B3-U0-G2		
SAM-36L	2	36547	153.6	38470	161.7	39239	164.9	B3-U0-G3	237 W	750W MH
	3	36357	152.8	38271	160.9	39036	164.1	B3-U0-G5		
	4	34913	146.8	36750	154.5	37485	157.6	B3-U0-G5		
	5S	35977	151.2	37871	159.2	38628	162.4	B5-U0-G4		
	FTA	35448	149.0	37314	156.8	38060	160.0	B3-U0-G2		
SAM-42L	2	39231	141.6	41296	149.0	42122	152.0	B4-U0-G3	277 W	1000W MH
	3	39099	141.1	41157	148.5	41980	151.5	B3-U0-G5		
	4	38885	140.3	40932	147.7	41751	150.7	B3-U0-G5		
	5S	39927	144.1	42028	151.7	42869	154.7	B5-U0-G4		
	FTA	39340	142.0	41410	149.4	42238	152.4	B3-U0-G2		
SAM-50L	2	48196	142.3	50732	149.8	51747	152.8	B4-U0-G4	338.6	1000W MH
	3	48033	141.9	50561	149.3	51573	152.3	B4-U0-G5		
	4	47771	141.1	50285	148.5	51291	151.5	B4-U0-G5		
	5S	49050	144.9	51631	152.5	52664	155.5	B5-U0-G5		
	FTA	48329	142.7	50872	150.2	51890	153.2	B3-U0-G3		

<sup>1</sup>Values are nominal, see IES file for more detail      <sup>2</sup>Electrical data at 25C (77F). Actual wattage may differ by +/-10%.

\*Please refer to the DLC Qualified Products List at [www.Designlights.org/QPL](http://www.Designlights.org/QPL) to confirm specific product qualifications.




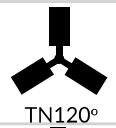




### EPA RATINGS AND VIBRATION CHART

	SLPF		UMB		UAB		WFM		WAM		TRN		HTM		WEIGHT
SAS	0.53	1.5g	0.47	3g	0.53	3g	0.47	3g	0.53	3g	0.47	1.5g	0.47	3g	11 lbs
SAM	0.71	1.5g	0.64	3g	0.71	3g	0.64	3g	0.71	3g	0.64	1.5g	0.64	3g	22 lbs
<b>WEIGHT</b>	4.5 lbs		2.5 lbs		5.5 lbs		3.0 lbs		6.0 lbs		2.5 lbs		3.5 lbs		

\* EPA Ratings listed assume fixture is mounted horizontally. For adjustable mounting options, EPA will vary with selected angle.

### TILT DEGREE

TILT DEGREE		0°	30°	45°	TILT DEGREE		0°	30°	45°
 Single	SAS	0.47	1.32	1.72	 T90°	SAS	1.13	1.83	2.39
	SAM	0.64	2.49	3.32		SAM	1.54	3.46	4.61
 D180°	SAS	1.03	1.32	1.72	 TN120°	SAS	1.22	2.77	3.58
	SAM	1.41	2.49	3.32		SAM	1.66	5.23	6.91
 D90°	SAS	0.85	1.58	1.72	 Q90°	SAS	1.13	1.83	2.39
	SAM	1.15	2.99	3.32		SAM	1.54	3.46	4.61

\*EPA for UMB, WFM, TRN, and HTM mounts

### ELECTRICAL DATA (AMPS)

Lumen Package	120V	208V	240V	277V	347V	480V
6L	0.38 A	0.22 A	0.19 A	0.17 A	0.13 A	0.10 A
9L	0.58 A	0.34 A	0.29 A	0.25 A	0.20 A	0.15 A
12L	0.73 A	0.42 A	0.37 A	0.32 A	0.25 A	0.18 A
15L	0.92 A	0.53 A	0.46 A	0.40 A	0.32 A	0.23 A
18L	1.14 A	0.66 A	0.57 A	0.49 A	0.39 A	0.29 A
24L	1.39 A	0.80 A	0.70 A	0.60 A	0.48 A	0.35 A
30L	1.83 A	1.06 A	0.92 A	0.79 A	0.63 A	0.46 A
36L	1.96 A	1.13 A	0.98 A	0.85 A	0.68 A	0.49 A
42L	2.27 A	1.31 A	1.13 A	0.98 A	0.78 A	0.57 A
50L	2.82 A	1.63 A	1.41 A	1.22 A	0.98 A	0.71 A

\*Electrical data at 25C (77F). Actual wattage may differ by +/-10%.



**FIELD ADJUSTABLE OUTPUT DATA (FAO)**

Part Number	FAO Position	0	1	2	3	4	5	6	7
SAS-6L-U-40-T4	Input Power (W)	46	40	35	29	24	19	13	8
	Approx Lumens @3000K	6234	5421	4743	3930	3253	2575	1762	1084
	Approx Lumens @4000K	6562	5706	4993	4137	3424	2710	1854	1141
	Approx Lumens @5000K	6693	5820	5093	4220	3492	2765	1892	1164
SAS-9L-U-40-T4	Input Power (W)	70	61	52	44	35	27	19	10
	Approx Lumens @3000K	8817	7683	6550	5542	4409	3401	2393	1260
	Approx Lumens @4000K	9281	8088	6894	5834	4641	3580	2519	1326
	Approx Lumens @5000K	9467	8250	7033	5951	4734	3652	2570	1352
SAS-12L-U-40-T4	Input Power (W)	82	72	61	52	43	33	23	14
	Approx Lumens @3000K	12516	10990	9311	7937	6563	5037	3511	2137
	Approx Lumens @4000K	13175	11568	9801	8355	6909	5302	3695	2249
	Approx Lumens @5000K	13439	11800	9997	8522	7047	5408	3769	2294
SAS-15L-U-40-T4	Input Power (W)	108	95	82	70	57	44	31	18
	Approx Lumens @3000K	15791	13890	11989	10235	8334	6433	4533	2632
	Approx Lumens @4000K	16622	14621	12620	10774	8773	6772	4771	2770
	Approx Lumens @5000K	16954	14913	12872	10989	8948	6907	4866	2826
SAS-18L-U-40-T4	Input Power (W)	132	117	100	85	68	53	37	21
	Approx Lumens @3000K	17984	15940	13624	11581	9264	7221	5041	2861
	Approx Lumens @4000K	18931	16780	14342	12190	9752	7601	5306	3012
	Approx Lumens @5000K	19310	17116	14629	12434	9948	7753	5413	3072
SAM-24L-U-40-T4	Input Power (W)	165	142	123	104	84	64	44	25
	Approx Lumens @3000K	23203	19969	17297	14625	11812	9000	6187	3516
	Approx Lumens @4000K	24424	21019	18207	15395	12434	9474	6513	3701
	Approx Lumens @5000K	24912	21439	18571	15702	12682	9663	6643	3775
SAM-30L-U-40-T4	Input Power (W)	222	196	169	142	115	88	62	34
	Approx Lumens @3000K	29688	26211	22600	18990	15379	11768	8291	4547
	Approx Lumens @4000K	31251	27591	23790	19989	16189	12388	8728	4786
	Approx Lumens @5000K	31876	28143	24266	20389	16512	12636	8902	4882
SAM-36L-U-40-T4	Input Power (W)	237	210	182	154	126	99	71	42
	Approx Lumens @3000K	34913	30936	26811	22686	18561	14584	10459	6187
	Approx Lumens @4000K	36750	32563	28222	23880	19538	15351	11009	6513
	Approx Lumens @5000K	37485	33215	28786	24357	19929	15658	11230	6643
SAM-42L-U-40-T4	Input Power (W)	277	239	207	174	142	109	76	43
	Approx Lumens @3000K	38885	33551	29058	24426	19934	15301	10669	6036
	Approx Lumens @4000K	40932	35317	30588	25712	20983	16107	11230	6354
	Approx Lumens @5000K	41751	36023	31200	26226	21403	16429	11455	6481
SAM-50L-U-40-T4	Input Power (W)	339	292	253	213	174	133	93	53
	Approx Lumens @3000K	47771	41148	35652	30015	24520	18742	13105	7469
	Approx Lumens @4000K	50285	43313	37528	31595	25810	19728	13795	7862
	Approx Lumens @5000K	51291	44180	38279	32227	26326	20123	14071	8019

<sup>1</sup>LED Chips are frequently updated therefore values are nominal <sup>2</sup>Electrical data at 25°C (77°F) 277V. Actual wattage may differ by +/-10%.



## CONTROLS OPTIONS

### BASIC

#### FSP311/Lx - FSP321/Lx

Optional Bluetooth Programmable PIR sensor allows for Continuous Dimming, Motion and/ or daylight harvesting, Fully adjustable high/low dimmed light levels, and Adjustable time delay/ cutoff delay. The sensor is programmed via a free iOS® or Android® Sensor Configuration App (compatible device provided by others). Available in 10'-20' or 20'-40' mounting lenses. See coverage patterns below, L7=20'-40', L3=10'-20'.

Default Settings:

- High Mode: 100% Output
- Low Mode: 10% Output
- Time Delay: 5 mins
- Cutoff: 1 hr
- Sensitivity: High
- Photocell: Disabled
- Continuous Dimming: Disabled

#### FAO

Internal bi-level switch offers adjustable light levels for greater flexibility within one product. Utilizes 0-10V dimming wires and cannot be combined with other sensor or control options.

#### CRxP

3-Pin or 7-pin ANSI C136.41-2013 control receptacle option available for NEMA twist lock photocontrols or wireless control modules. Control accessories sold separately. Dimming leads from the receptacle will be connected to the driver dimming leads (Consult factory for alternate wiring). x = Number of pins (3 or 7).

### ADVANCED

#### NUROAir by ILLUMUS

##### NURO

NUROAir Plug n Play Bluetooth Sensor is the optimal groupable controls lighting solution. With main features such as Plug and Play, PIR Motion Sensing, Occupancy/Vacancy and Photocell (BLK) - this flexibility makes the NUROAir Plug n Play Sensor ideal for tailoring lighting to specific space needs, optimizing both ambiance and efficiency. The NUROAir App, available for download on iOS and Google Play Store, offers a user-friendly interface for automatic or manual customization of your space. Through the app, users can configure sensor settings such as the Light Output, CCT, Hold Time, Standby Time/Level, High/Low End Trim, Background Light Level, Set Schedules, and Control Lighting Groups or Zones, all from a mobile or tablet device. Manual control is also available with a range of compatible wireless & wired wall switch options.



[Click Here or Scan Code to Learn More About](#)

**NUROAir Bluetooth Controls**

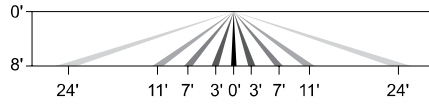
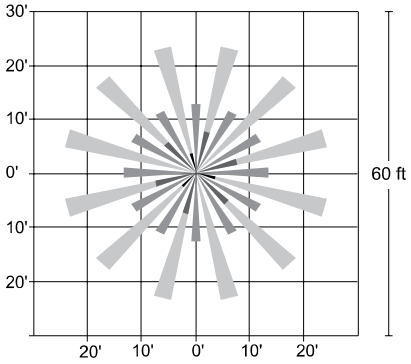
#### Synapse (SYN or TL7)

Utilizing a robust 2.4 GHz Self-Healing Mesh Network, Synapse provides flexibility and scalability making it a perfect outdoor solution for both new construction and retrofit projects. The easy-to-use web application is accessible on any device with an internet connection and allows for complete customization of the system and its features. Integral radio (SYN) includes (2) 24V inputs for a Wattstopper sensor or twist lock photocell into the wireless lighting system. External radio (TL7) includes (1) low voltage input for a Wattstopper sensor, available in 120-480V. Sensors available in 20' or 40' mounting lenses. See coverage patterns below. Sensor mounted on hinged driver cover. Antenna exits side of luminaire for maximum connectivity.

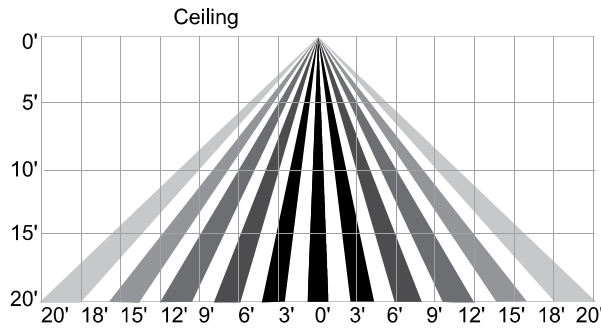
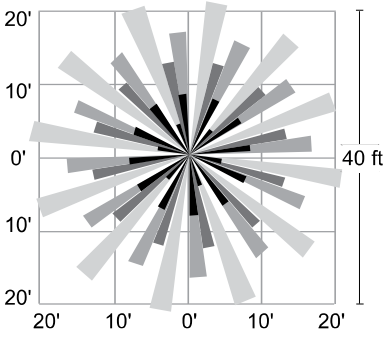


### COVERAGE PATTERNS

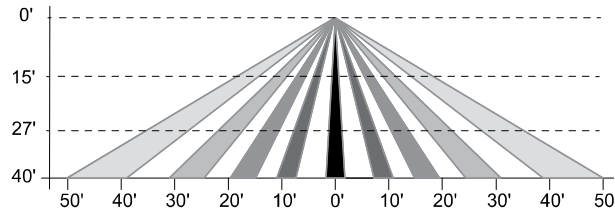
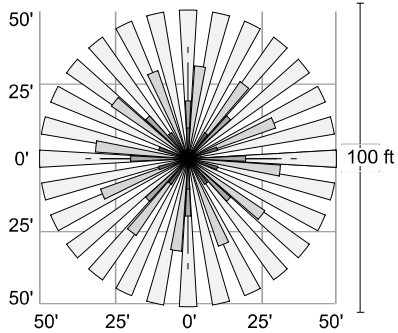
#### FSP-L2 Top and Side Coverage Patterns



#### FSP-L3 Top and Side Coverage Patterns



#### FSP-L7 Top and Side Coverage Patterns



### BACK LIGHT CONTROL OPTIONS



#### HSS

##### Integral House Side Shield

Delivers backlight control that significantly reduces light spill behind the pole for applications with pole locations close to adjacent properties. Shown with Medium housing . HSS rotates with optic distribution.



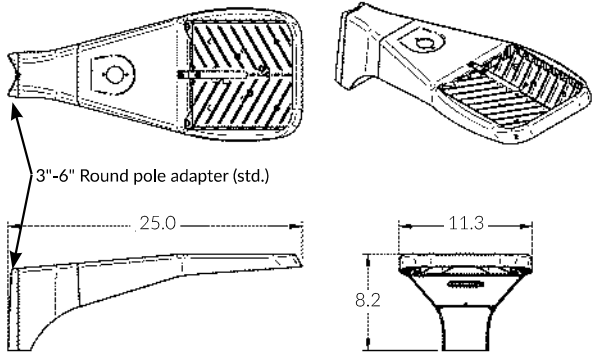
#### GS

##### External Glare Shield

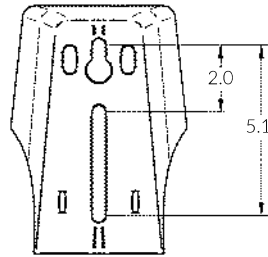
Rotatable 3-sided field installable external glare shield. Shown with Medium housing

LINE DRAWINGS

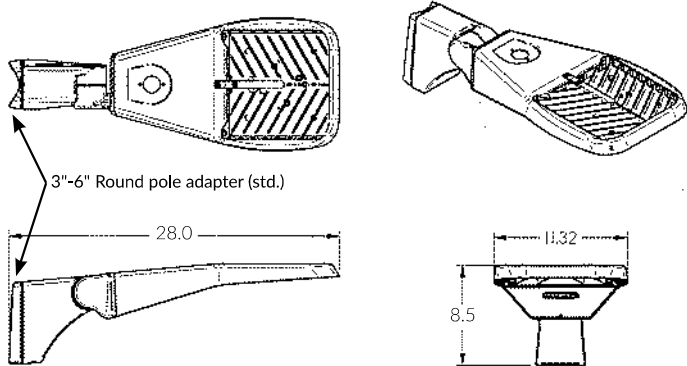
SAS Universal Mounting Bracket (UMB/R)



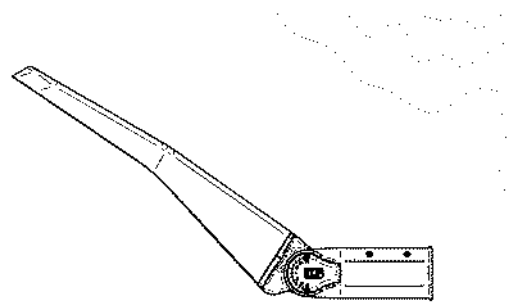
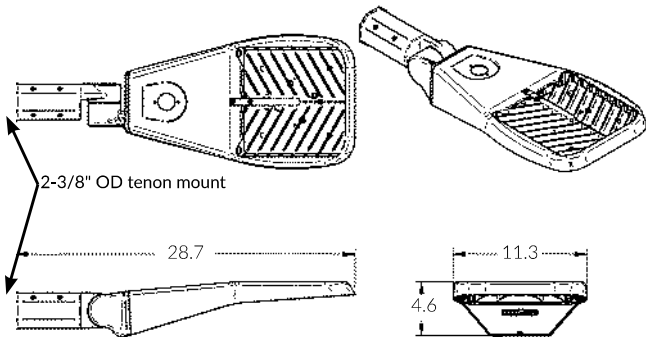
UMB/R, UAB/R Mounting Detail



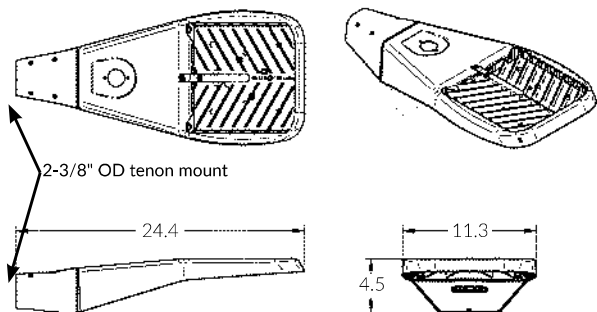
SAS Universal Adjustable Mount Bracket (UAB/R)



SAS Adjustable Slip Fitter (SLPF)



SAS Horizontal Tenon Mount (HTM)



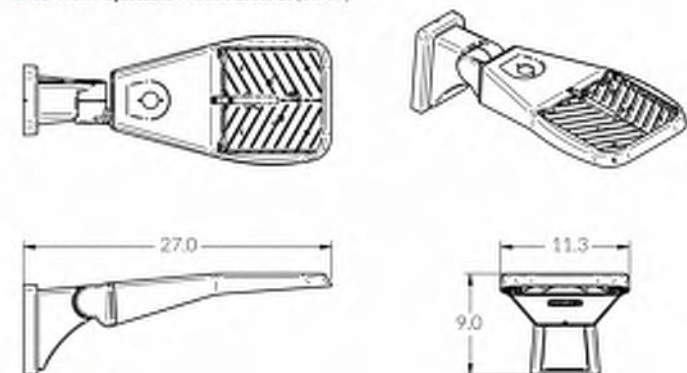


## LINE DRAWINGS (Continued)

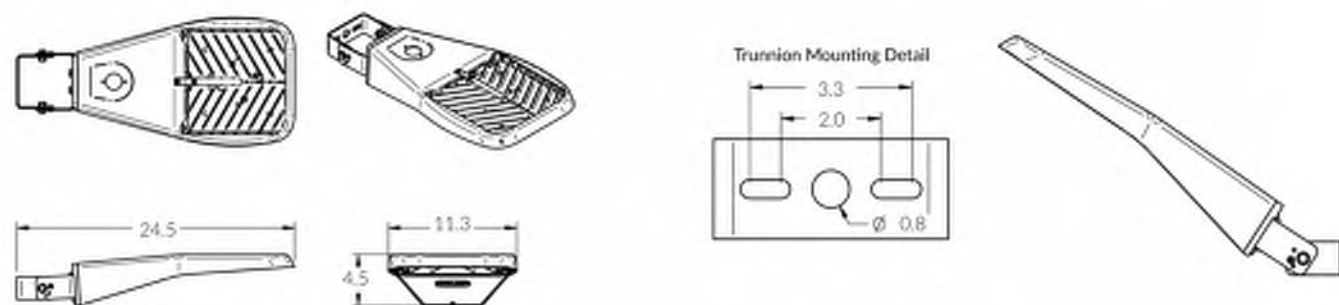
### SAS Wall Fixed Mount (WFM)



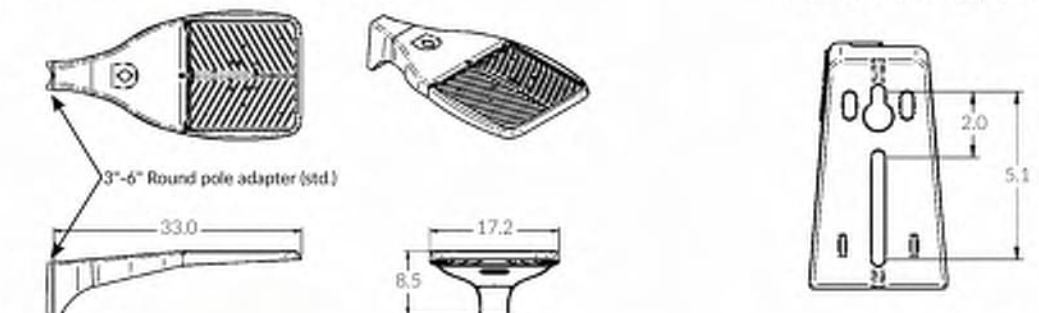
### SAS Wall Adjustable Mount Bracket (WAM)



### SAS Trunnion Mount (TRN)



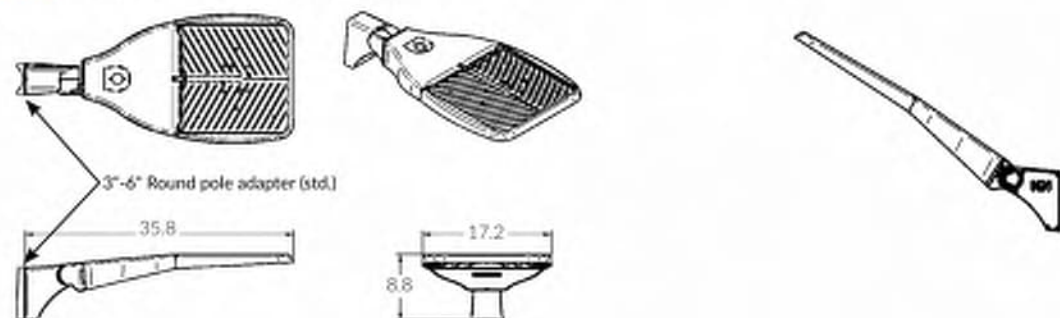
### SAM Universal Mounting Bracket (UMB/R)





## LINE DRAWINGS (Continued)

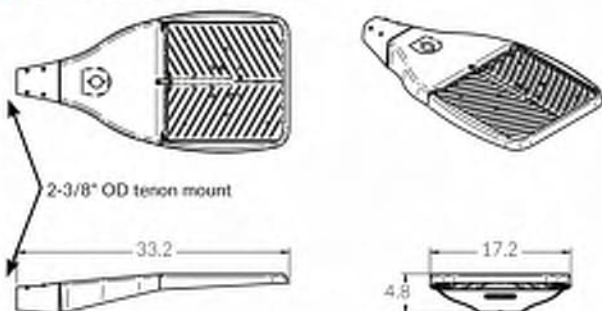
**SAM** Universal Adjustable Mount Bracket (UAB/R)



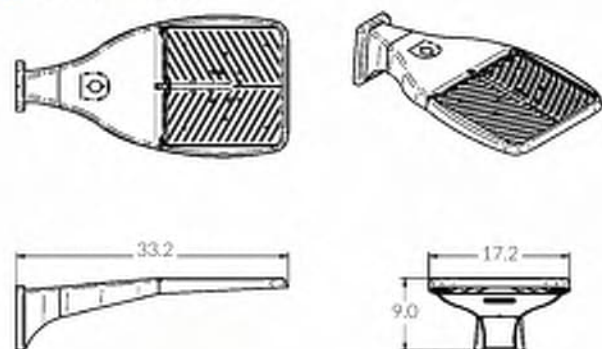
**SAM** Adjustable Slip Fitter (SLPF)



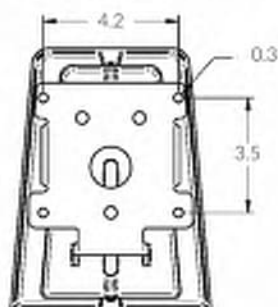
**SAM** Horizontal Tenon Mount (HTM)



**SAM** Wall Fixed Mount (WFM)



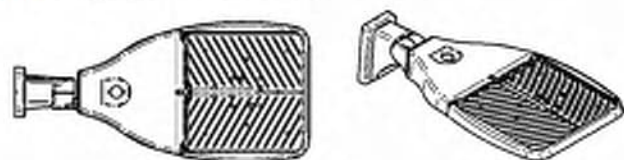
WFM/WAM Mounting Detail





### LINE DRAWINGS (Continued)

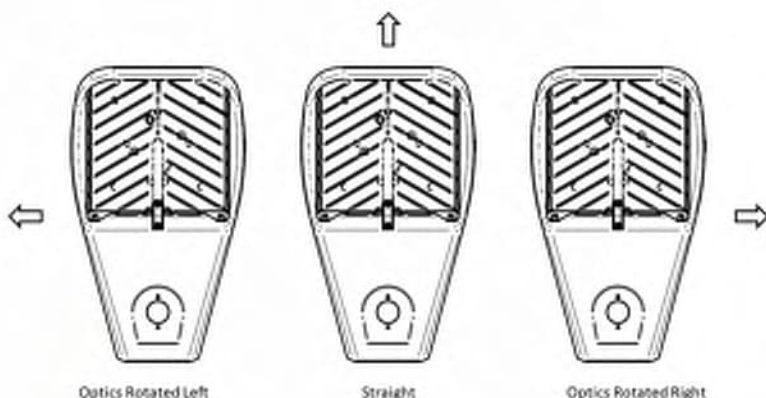
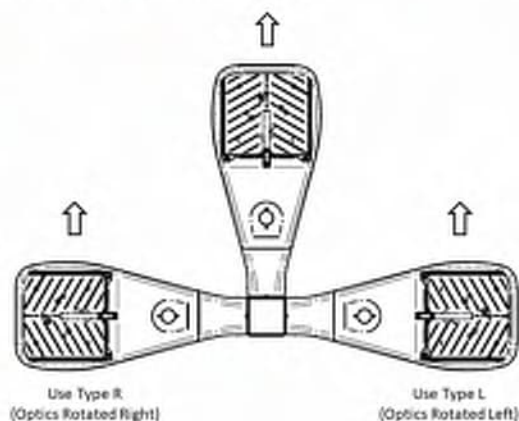
#### SAM Wall Adjustable Mount Bracket WAM



#### SAM Trunnion Mount (TRN)



### OPTICS ORIENTATION



### FACTORY SELECT FINISH GUIDE



COLOR NAME AND DESCRIPTION		PRICING
WHT	- ILP White	Standard
SLV	- ILP Silver	Standard
NAT	- ILP Natural Aluminum	Standard
BRZ	- ILP Bronze	Standard
BLK	- ILP Black	Standard

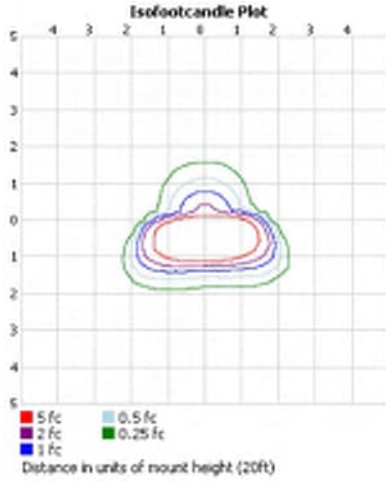
COLORS SHOWN ABOVE ARE TO BE USED AS REFERENCE, NOT EXACT MATCH.  
PLEASE REQUEST PAINT CHIPS FOR EXACT MATCH.



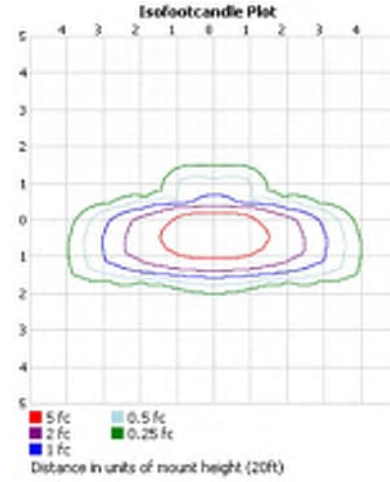
### PHOTOMETRICS

Photometric values based upon tests performed in compliance with LM-79. IES files can be downloaded at [www.ilp-inc.com](http://www.ilp-inc.com)

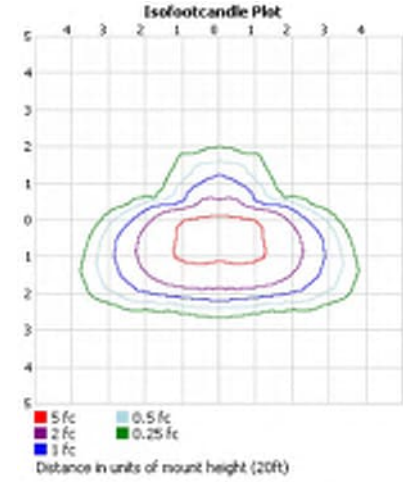
FTA



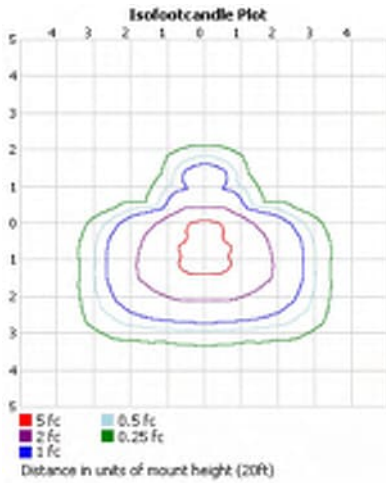
T2



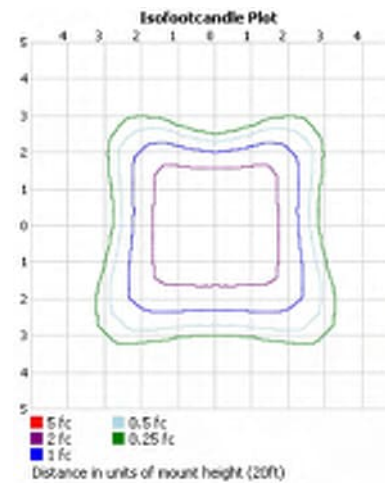
T3



T4



T5S




**PRODUCT  
OVERVIEW**

**SCAN OR  
CLICK HERE**

## FEATURES

- Delivers uniform and precise lighting with five optical distributions for maximum coverage with optional diffuse lens for maximum visual comfort
- Available in three sizes, delivering 1,000 to 24,000 lumens at up to 160 LPW for a scalable lighting solution that fits any application.
- Pairs with the matching Skyline Area Light for a cohesive site lighting solution, ensuring a uniform look across any project.
- Patent-pending quick-mount bracket enables hands-free wiring and simplifies installation on standard junction boxes or vertical surfaces.
- Ensures long-lasting performance with an IP66-rated die-cast aluminum housing and UV-stabilized optics.
- Offers advanced control options with wireless integration, PIR occupancy sensors, and bi-level dimming capabilities.
- Integrated EM in all fixture sizes for emergency Egress.

## DIGITAL NAVIGATION

 Explore the spec sheet through the links below

[ORDERING GUIDE](#)
[LED SYSTEMS TABLE](#)
[CONTROLS](#)
[LINE DRAWINGS](#)


## SUITABLE APPLICATIONS

- Exterior Wall Lighting
- Industrial Facilities
- Multi-Family
- Building Entrances
- Parking Lots
- Retail
- Pedestrian Walkways
- Storage Facilities
- Office
- Multi-use Facilities
- Education

## CERTIFICATIONS


\*3000K Only


## SPECIFICATIONS

### CONSTRUCTION

The Skyline Wall Pack series features an architectural rectilinear wedge shape with die-cast aluminum construction. Available in 3 different sizes for a fully scalable solution, the fully gasketed housings are IP66 rated for whole luminaire ingress protection against moisture and environmental contaminants. The Skyline is protected with a durable Bronze polyester powder coat finish to withstand extreme weather changes without cracking or peeling with optional wet paint Black, White, Natural Aluminum and Silver finishes (Consult factory for availability of alternate finishes). Finish is Salt Spray tested for 500 hrs.

### OPTICS

The IP66 silicone gasket sealed optical chamber utilizes proprietary polycarbonate refractive optics to provide exceptional coverage and uniformity in IES Types 2, 3, 4, or 4FT. Polycarbonate optics are impact resistant and UV stabilized for maximum longevity. Available in 5000K, 4000K, and 3000K, color temperatures per ANSI C78.377. Minimum CRI of 80. The Skyline series produces Zero uplight and is DarkSky approved in 3000K color temperature. The optional Visual Comfort Acrylic (AD) lens enhances the building's entryways by creating a welcoming and visually comfortable environment. Its recessed optics, paired with a surface-mounted diffusing lens, minimize surface brightness while maintaining effective optical control.

### ELECTRICAL

High-performance driver features over-voltage, under-voltage, short circuit and over temperature protection. 0-10V dimming (10% - 100%) standard. Standard Universal Voltage (120-277 Vac) Input 50/60 Hz or optional High Voltage (347-480 Vac). L85 >100,000 hrs. in accordance of IESNA TM-21-19 Projected values at 25°C Ambient temperature. Total harmonic distortion: <20%. Power factor: >0.90. Surge Protection 10kA: 1L; 6kV: 2L-24L. Additional protection is available in 10kV and 20kV options. Optional 120-277V battery backup & cold weather battery options provide 90 minutes of constant power to the LED system, ensuring code compliance. Select models CEC title 20 Compliant, see ordering guide.

### THERMAL

The Skyline Wall Pack Series features an array of High-efficiency LED's mounted on a metal core circuit board. The LED boards are mounted directly to the cast aluminum housing with internal heat dissipating fins to provide excellent thermal performance extending the life of electronic components. Base Operating Ambient Temperature: -40°C to +50°C (-40°F to +122°F). SWM, SWL: -40°C to +40°C (-40°F to +104°F). Reduced fixture maximum ambient on emergency battery backups and HV options, consult factory.

### INSTALLATION

The Skyline Wall Pack is designed for effortless installation, featuring a patent-pending universal quick-mount bracket that enables hands-free wiring. This innovative bracket securely holds the fixture in place while wiring connections are made, streamlining the installation process. It is compatible with standard 3-1/2" to 4" round/octagonal, 4" square, and single-gang masonry junction boxes, as well as vertical surface mounting using lag bolts (supplied by others). The SBB option allows for 1/2" NPT conduit entry points for surface conduit or through-branch wiring. The back box is an authorized electrical wiring compartment. The Architectural Wall Spacer (AWS) enhances the fixture's aesthetic by creating a subtle floating effect while also helping to compensate for minor wall surface irregularities.

### CONTROLS

Optional integrated passive infrared Bluetooth™ motion sensors are available on SWM & SWL fixtures for standalone controls and can be configured using an intuitive iOS or Android app.

For advanced wireless control, the Skyline Wall Pack (SWM/SWL) offers Bluetooth & 2.4Ghz wireless mesh network options via NuroAir, Synapse, & Enlighted. See controls section for detailed information on standalone and wireless control options.

### CERTIFICATIONS

ETL Listed for wet locations to UL 1598 and UL 8750 standards. IP66 Rated Optical Chamber per IEC 60598. Tested in accordance with IESNA LM-79 and LM-80 standards. BAA compliant. RoHS Compliant. Title 24 Compliant; see local ordinance for qualification information. Finish salt-spray tested to 500 hours per ASTM B117. DLC Premium Listed Product, Not all versions of this product may be DLC Premium qualified. Please check the DLC Qualified Products List at [www.designlights.org/QPL](http://www.designlights.org/QPL) to confirm which versions are qualified.

### WARRANTY

5 Year Warranty Standard; 10 Year Warranty Optional ([Terms and Conditions apply](#)).

## ORDERING GUIDE

PART #

Example: SWM-5L-U-50-T4-BRZ-EM16-NURO-SP1-10YR

SERIES		LUMENS		DRIVER		CCT		OPTIC		LENS		FINISH	
SWS <sup>2</sup>	Skyline Wall Pack Small	1L <sup>2</sup>	1,000 lm	U	120-277V	30	3000K	T2 <sup>8</sup>	T2 - Type 2	BLANK	None	BRZ	Bronze
		2L <sup>2</sup>	2,000 lm	HV	347-480V	40	4000K	T3 <sup>8</sup>	T3 - Type 3	AD <sup>7</sup>	Visual Comfort Diffuser	BLK	Black
		3L <sup>2</sup>	3,000 lm			50	5000K	T4	T4 - Type 4			NAT	Natural Aluminum
SWM	Skyline Wall Pack Medium	3L <sup>2</sup>	3,000 lm					T4FT <sup>8</sup>	Forward Throw			SLV	Silver
		4L	4,000 lm									WHT	White
		6L	6,000 lm									RALxxxx <sup>1</sup>	Custom (xxxx = Custom RAL#)
		9L	9,000 lm										
		12L <sup>2,5</sup>	12,000 lm										
SWL	Skyline Wall Pack Large	12L	12,000 lm										
		15L	15,000 lm										
		18L <sup>5</sup>	18,000 lm										
		21L <sup>2,5</sup>	21,000 lm										
		24L <sup>2,5</sup>	24,000 lm										

SML	EMERGENCY	CONTROLS OPTIONS	
		BASIC	ADVANCED
BLANK	None	BLANK	None
SMLxxxx <sup>1</sup>	Specified Lumen Output (xxxx=Lumen Output, Nearest Hundred)	FSP311/LX <sup>2,3,8,11</sup>	Legrand FSP-311 120/277V Sensor (X = Mounting Height 2=<10', 3=10-20', 7=20-40')
		FSP321/LX <sup>3,8,12</sup>	Legrand FSP-321 120-480V Sensor (X = Mounting Height 2=<10', 3=10-20', 7=20-40')
		PCU <sup>2</sup>	Electronic UNIV Photocell (120-277V)
			NURO <sup>2,3,8</sup>
			NUROAir Plug n Play Bluetooth Groupable Sensor
			SYN <sup>2,5,8,14</sup>
			Synapse Control System
			SYNS/LX <sup>2,5,8,11,14</sup>
			Synapse Control System w/ Sensor (X = Mounting Height 3=10-20', 7=20-40')
	EM5 <sup>7</sup>		
	10°C 5W Self Diagnostic CEC Title 20 Battery Backup		
	EM16 <sup>8,15</sup>		
	16W Self Diagnostic CEC Title 20 Battery Backup		
	EMCT6 <sup>7,8</sup>		
	6W Self Diagnostic Cold Temp Battery Backup -40°F (-40°C) - CEC Title 20 Compliant		
	EMCT8 <sup>7,8</sup>		
	8W Self Diagnostic Cold Temp Battery Backup -22°F (-30°C) - CEC Title 20 Compliant		
	EMCT14 <sup>7,8</sup>		
	-20°C CEC Title 20 14W Self Diagnostic Cold Temp Battery Backup		

PROTECTION	WARRANTY	SHIP WITH ACCESSORIES
BLANK	None	BLANK
SP1 <sup>2</sup>	10kA Surge Protection Device	+SWx-SBB-yyy-KIT
SP2 <sup>2</sup>	20kA Surge Protection Device	Surface Back Box (x=fixture size; yyy = Finish; BRZ, BLK, SLV, WHT, NAT)
SP1HV	10kA Max 480V Surge Protector	+SWx-AWS-yyy-KIT <sup>6</sup>
SP2HV	20kA Max 480V Surge Protector	Architectural Wall Spacer (x=fixture size; yyy = Finish; BRZ, BLK, SLV, WHT, NAT)
FUSE/SXXX	FUSE 120V, 277V, 347V (x= voltage)	
FUSE/DXXX	FUSE 208V, 240V, 480V (x= voltage)	
	BLANK	
	5 Year	
	10YR <sup>9</sup>	
	10 Year	

## FOOTNOTES

- <sup>1</sup> Contact Factory for pricing and availability
- <sup>2</sup> Not available with HV option
- <sup>3</sup> Requires Bluetooth Enabled device for programming (provided by others)
- <sup>4</sup> Only available with SWL-12L
- <sup>5</sup> Not available with EM
- <sup>6</sup> Not compatible with SBB
- <sup>7</sup> Not available with SWL
- <sup>8</sup> Not available with SWS
- <sup>9</sup> Requires additional Surge Protection; For additional details see General Terms and Conditions, consult factory for pricing
- <sup>10</sup> Not compatible with any control options
- <sup>11</sup> L7 only available with SWL
- <sup>12</sup> Only available with SWL
- <sup>13</sup> Not available with SWM
- <sup>14</sup> Requires additional system components; Contact Factory for Site Layout
- <sup>15</sup> When used with SWM: 10°C; SWL: 0°C

CONTINUE TO NEXT PAGE

## DARKSKY APPROVED ORDERING GUIDE

PART #  Example: SWM-5L-U-50-T4-BRZ-EM16-NURO-SP1-10YR

SERIES		LUMENS		DRIVER	CCT	OPTIC	LENS	FINISH
SWS <sup>2</sup>	Skyline Wall Pack Small	1L <sup>2</sup>	1,000 lm	U 120-277V	30 3000K	T2 <sup>8</sup> T2 - Type 2	BLANK None	BRZ Bronze
		2L <sup>2</sup>	2,000 lm	HV 347-480V		T3 <sup>8</sup> T3 - Type 3	AD <sup>7</sup> Visual Comfort Diffuser	BLK Black
		3L <sup>2</sup>	3,000 lm			T4 T4 - Type 4		NAT Natural Aluminum
SWM	Skyline Wall Pack Medium	3L <sup>2</sup>	3,000 lm			T4FT <sup>8</sup> Forward Throw		SLV Silver
		4L	4,000 lm					WHT White
		6L	6,000 lm					RALxxxx <sup>1</sup> Custom (xxxx = Custom RAL#)
		9L	9,000 lm					
		12L <sup>2,5,15</sup>	12,000 lm					
SWL	Skyline Wall Pack Large	12L <sup>15</sup>	12,000 lm					
		15L <sup>15</sup>	15,000 lm					
		18L <sup>5,15</sup>	18,000 lm					
		21L <sup>2,5,15</sup>	21,000 lm					
		24L <sup>2,5,15</sup>	24,000 lm					

SML	EMERGENCY	CONTROLS OPTIONS	
		BASIC	ADVANCED
BLANK None	BLANK None	BLANK None	BLANK None
SMLxxxx Specified Lumen Output (xxxx=Lumen Output, Nearest Hundred)	EM5 <sup>7,13</sup> 5°C 5W CEC Title 20 Battery Backup	FSP311/LX <sup>2,3,8,11</sup> Legrand FSP-311 120/277V Sensor (X = Mounting Height 2=<10', 3=10-20', 7=20-40')	NURO <sup>2,3,8</sup> NUROAir Plug n Play
	EM16 <sup>8</sup> 5°C 16W CEC Title 20 Battery Backup		Bluetooth Groupable Sensor
	EMCT6 <sup>7,8</sup> 6W Cold Temp Battery Backup -40°F (-40°C) - CEC Title 20 Compliant	FSP321/LX <sup>3,8,12</sup> Legrand FSP-321 120-480V Sensor (X = Mounting Height 2=<10', 3=10-20', 7=20-40')	SYN <sup>2,5,8,14</sup> Synapse Control System
	EMCT8 <sup>7,8</sup> 8W Cold Temp Battery Backup -22°F (-30°C) - CEC Title 20 Compliant		SYNS/LX <sup>2,5,8,14</sup> Synapse Control System w/ Sensor (X = Mounting Height 3=10-20', 7=20-40')
	EMCT14 <sup>7,8</sup> -20°C CEC Title 20 14W Cold Temp Battery Backup	PCU <sup>2</sup> Electronic UNIV Photocell (120-277V)	

PROTECTION	WARRANTY	SHIP WITH ACCESSORIES
BLANK None	BLANK 5 Year	BLANK None
SP1 <sup>2</sup> 10kA Surge Protection Device	10YR <sup>9</sup> 10 Year	+SWx-SBB-yyy-KIT Surface Back Box (x=fixture size; yyy = Finish; BRZ, BLK, SLV, WHT, NAT)
SP2 <sup>2</sup> 20kA Surge Protection Device		+SWx-AWS-yyy-KIT <sup>6</sup> Architectural Wall Spacer (x=fixture size; yyy = Finish; BRZ, BLK, SLV, WHT, NAT)
SP1HV 10kA Max 480V Surge Protector		
SP2HV 20kA Max 480V Surge Protector		
FUSE/SXXX FUSE 120V, 277V, 347V (x= voltage)		
FUSE/DXXX FUSE 208V, 240V, 480V (x= voltage)		

### FOOTNOTES

- <sup>1</sup> Contact Factory for pricing and availability
- <sup>2</sup> Not available with HV option
- <sup>3</sup> Requires Bluetooth Enabled device for programming (provided by others)
- <sup>4</sup> Only available with SWL-12L
- <sup>5</sup> Not available with EM
- <sup>6</sup> Not compatible with SBB
- <sup>7</sup> Not available with SWL
- <sup>8</sup> Not available with SWS
- <sup>9</sup> Requires additional Surge Protection; For additional details see General Terms and Conditions, consult factory for pricing
- <sup>10</sup> Not compatible with any control options
- <sup>11</sup> L7 only available with SWL
- <sup>12</sup> Only available with SWL
- <sup>13</sup> Not available with SWM
- <sup>14</sup> Requires additional system components; Contact Factory for Site Layout
- <sup>15</sup> Not available with pedestrian comfort luminaire

## LED SYSTEMS INFO

LED SYSTEMS INFO <sup>1</sup>		3000K		4000K		5000K		Watts <sup>2</sup>	BUG Rating	DLC
Part Numbers	Lens	Lumens	Efficacy	Lumens	Efficacy	Lumens	Efficacy			
SWS-1L	T4	932	136.5	993	145.4	1007	148.5	7	B0-U0-G0	Premium
SWS-2L	T4	2092	136.5	2180	140.3	2254	144.4	16	B1-U0-G1	Premium
SWS-3L	T4	2757	129.6	2873	133.2	2934	139.2	21	B1-U0-G1	Premium
SWM-3L	T2	3051	148.5	3110	150.0	3270	156.9	21	B1-U0-G1	Premium
	T3	3108	151.2	3168	152.8	3331	159.8			Premium
	T4	3071	149.5	3131	151.0	3292	158.0			Premium
	T4FT	3037	147.8	3096	149.4	3256	156.2			Premium
SWM-4L	T2	3981	145.6	4059	147.1	4268	153.9	28	B2-U0-G2	Premium
	T3	4056	148.3	4134	149.9	4348	156.7			Premium
	T4	4008	146.6	4086	148.1	4297	154.9			Premium
	T4FT	3964	145.0	4041	146.5	4249	153.2			Premium
SWM-6L	T2	5940	140.7	6055	142.2	6367	148.7	43	B2-U0-G2	Premium
	T3	6051	143.3	6168	144.8	6486	151.5			Premium
	T4	5980	141.7	6096	143.1	6410	149.7			Premium
	T4FT	5914	140.1	6029	141.6	6339	148.1			Premium
SWM-9L	T2	8386	133.7	8549	135.1	8989	141.3	63	B2-U0-G2	Premium
	T3	8542	136.2	8708	137.6	9157	143.9			Premium
	T4	8443	134.6	8607	136.0	9050	142.2			Premium
	T4FT	8349	133.1	8512	134.5	8950	140.7			Premium
SWM-12L	T2	10759	125.9	10967	127.2	11533	133.1	86	B2-U0-G2	Premium
	T3	10960	128.2	11168	129.6	11749	135.5			Premium
	T4	10832	126.8	11043	128.1	11612	134.0			Premium
	T4FT	10700	125.4	10908	126.7	11470	132.5			Premium
SWL-12L	T2	12294	148.5	12533	150.1	13178	157.0	83	B2-U0-G2	Premium
	T3	12523	151.3	12767	152.9	13425	159.9			Premium
	T4	12377	149.6	12618	151.1	13268	158.1			Premium
	T4FT	12240	147.9	12478	149.4	13121	156.3			Premium
SWL-15L	T2	15165	141.9	15460	143.4	16256	150.0	108	B3-U0-G4	Premium
	T3	15448	144.6	15749	146.1	16560	152.8			Premium
	T4	15268	142.9	15565	144.4	16367	151.0			Premium
	T4FT	15099	141.3	15393	142.8	16186	149.4			Premium
SWL-18L	T2	17838	135.3	18185	136.8	19121	143.0	133	B3-U0-G4	Premium
	T3	18171	137.9	18524	139.3	19479	145.7			Premium
	T4	17959	136.3	18308	137.7	19252	144.0			Premium
	T4FT	17760	134.8	18106	136.2	19038	142.4			Premium
SWL-21L	T2	20259	128.7	20653	130.1	21717	136.1	159	B3-U0-G4	Premium
	T3	20638	131.2	21039	132.5	22123	138.6			Premium
	T4	20397	129.6	20794	131.0	21865	137.0			Premium
	T4FT	20171	128.2	20563	129.5	21623	135.5			Premium
SWL-24L	T2	23037	122.1	23485	123.4	24695	129.1	190	B3-U0-G4	Premium
	T3	23467	124.4	23924	125.7	25156	131.5			Premium
	T4	23194	123.0	23436	124.3	24863	130.0			Premium
	T4FT	22937	121.6	23383	122.9	24588	128.5			Premium

<sup>1</sup>Values are nominal, see IES file for more detail    <sup>2</sup>Electrical data at 25C (77F). Actual wattage may differ by +/-10%.

## CONTROLS OPTIONS

### BASIC

#### FSP311/Lx - FSP321/Lx

Optional Bluetooth Programmable PIR sensor allows for Continuous Dimming, Motion and/ or daylight harvesting, Fully adjustable high/low dimmed light levels, and Adjustable time delay/ cutoff delay. The sensor is programmed via a free iOS® or Android® Sensor Configuration App (compatible device provided by others). Available in up to 40' mounting lenses. See coverage patterns below, L7=20'-40', L3=10'-20', L2=<10'.

Default Settings:

- High Mode: 100% Output
- Low Mode: 10% Output
- Time Delay: 5 mins
- Cutoff: 1 hr
- Sensitivity: High
- Photocell: Disabled
- Continuous Dimming: Disabled

### ADVANCED

#### NUROAir by ILLUMUS

##### NURO

NUROAir Plug n Play Bluetooth Sensor is the optimal groupable controls lighting solution. With main features such as Plug and Play, PIR Motion Sensing, Occupancy/Vacancy and Photocell (BLK) - this flexibility makes the NUROAir Plug n Play Sensor ideal for tailoring lighting to specific space needs, optimizing both ambiance and efficiency. The NUROAir App, available for download on iOS and Google Play Store, offers a user-friendly interface for automatic or manual customization of your space. Through the app, users can configure sensor settings such as the Hold Time, Standby Time/ Level, High/Low End Trim, Background Light Level, Set Schedules, and Control Lighting Groups or Zones, all from a mobile or tablet device. Manual control is also available with a range of compatible wireless & wired wall switch options.



##### Enlighted

Enlighted's over-the-air upgradeable wireless control platforms provide out-of-the-box compliance with energy use regulations. The comprehensive capabilities of the sensor include vacancy detection, daylight harvesting, demand response, and energy savings reporting. Enlighted's enterprise system allows for easy integration of indoor and outdoor lighting with building management systems for site-wide IOT management. Enlighted ruggedized sensor mounted on hinged driver cover.

##### • Enlighted Connected (SU/5S/LR/CL)

-Fixtures are controlled based on occupancy & ambient light. Includes individual lighting control plus connection to Enlighted Energy Manager. The Energy Manager provides data analysis for all data collected by the Enlighted Smart Sensors for energy, occupancy & environment.

##### • Enlighted IOT (SU/5S/LR/IOT)

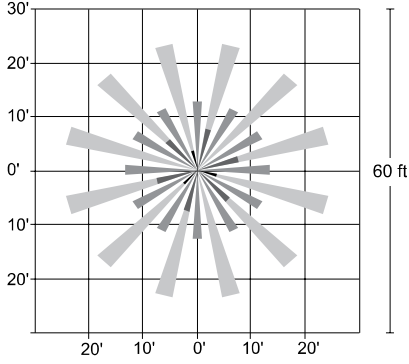
-Fixtures are controlled based on occupancy and ambient light. Includes individual lighting control plus connection to Enlighted Energy Manager. The Energy Manager provides data analysis for all data collected by Enlighted Smart Sensors for energy, occupancy & environment. Additionally, the IOT functionality takes the data access and function beyond just lighting to a wide range of applications beyond the standard connected lighting controls.

##### Synapse (SYN)

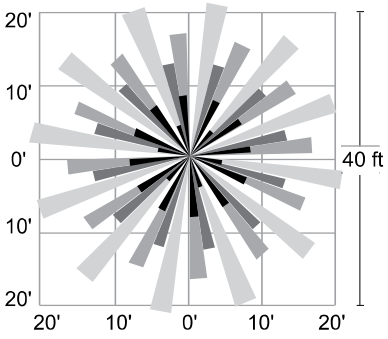
Utilizing a robust 2.4 GHz Self-Healing Mesh Network, Synapse provides flexibility and scalability making it a perfect outdoor solution for both new construction and retrofit projects. The easy-to-use web application is accessible on any device with an internet connection and allows for complete customization of the system and its features. Integral radio (SYN) includes (2) 24V inputs for a Wattstopper sensor. Sensors available in 10' or 40' mounting lenses. See coverage patterns below. Sensor mounted on hinged driver cover. Antenna exits side of luminaire for maximum connectivity.

## COVERAGE PATTERNS

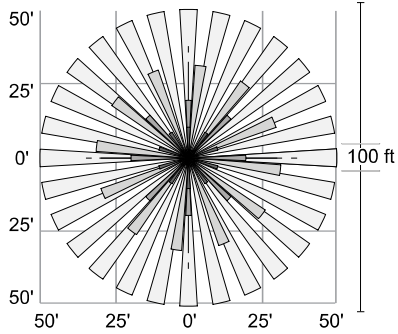
SYNS/L2, FSP311/L2, or FSP321/L2



SYNS/L3, FSP311/L3, or FSP321/L3



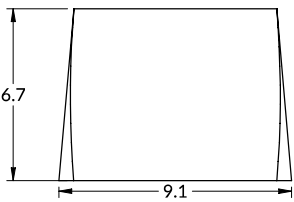
SYNS/L7, FSP311/L7, or FSP321/L7



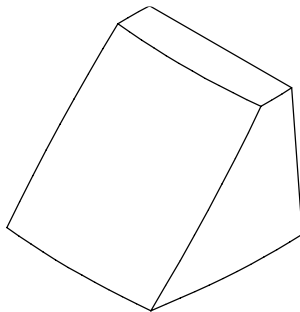
## LINE DRAWINGS (All dimensions shown in inches)

SWS

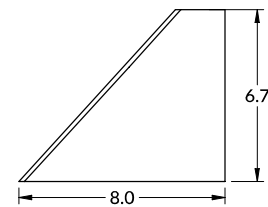
Front



Isometric



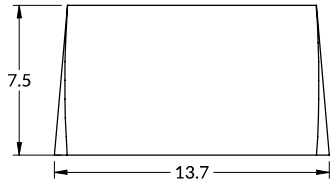
Side



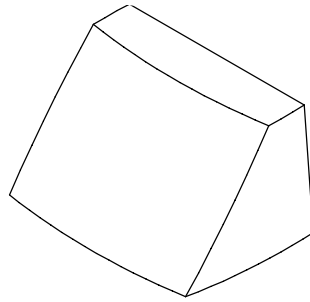
**LINE DRAWINGS** (Continued)

**SWM**

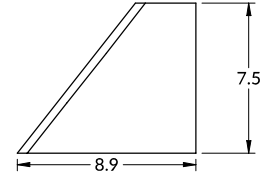
Front



Isometric

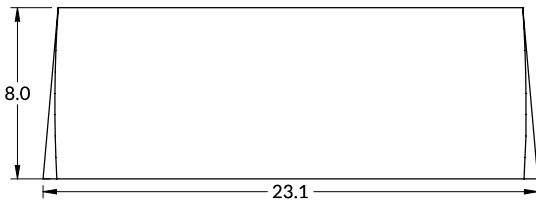


Side

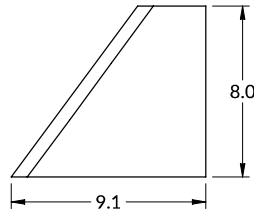


**SWL**

Front

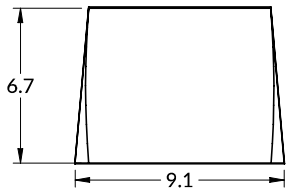


Side

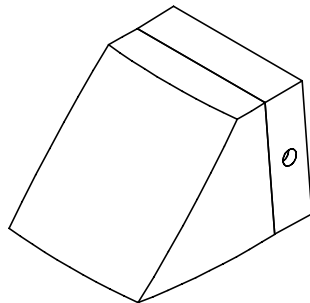


**SWS SBB**

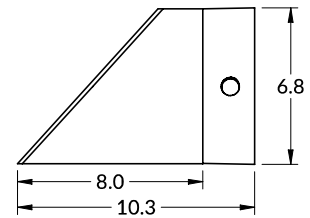
Front



Isometric



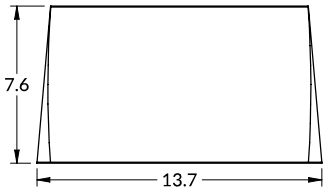
Side



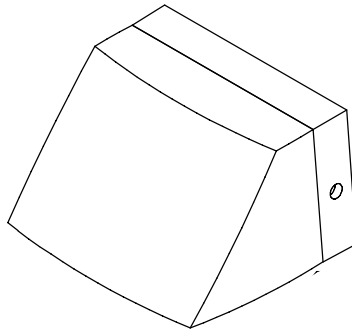
**LINE DRAWINGS** (Continued)

**SWM SBB**

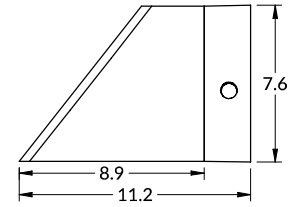
Front



Isometric

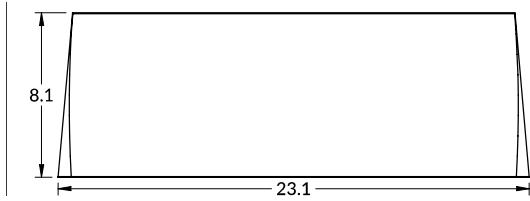


Side

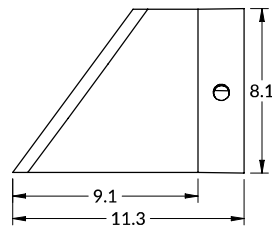


**SWL SBB**

Front

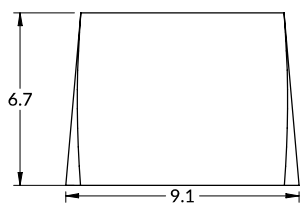


Side

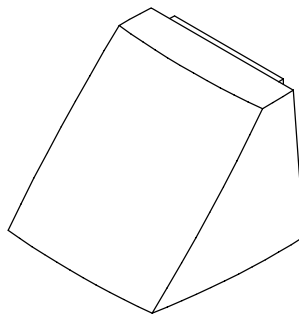


**SWS AWS**

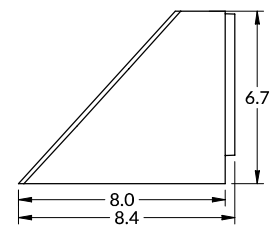
Front



Isometric



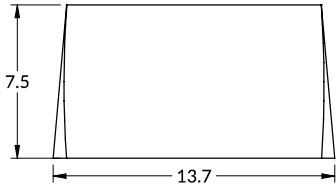
Side



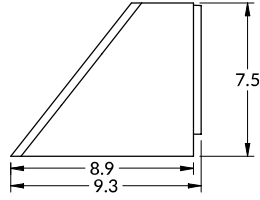
**LINE DRAWINGS** (Continued)

**SWM AWS**

Front

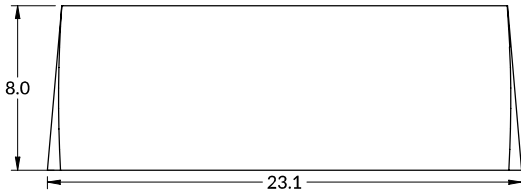


Side

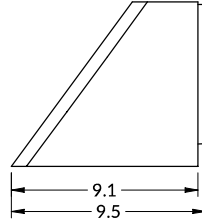


**SWLAWS**

Front

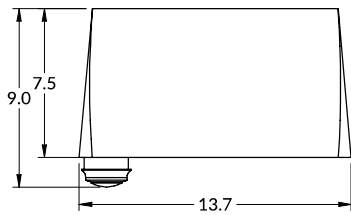


Side



**SWM NURO**

Front



Side

